

# Promotional Products

# 2023-2024



**Custom  
Boxes**



**NEW**

# FULL COLOUR PACKAGING

- Customised packaging is easier than ever.
- Choose from our standard sizes or make your own.
- Full colour printing.
- Double sided.



**Custom Boxes  
Available**



**Superior  
Printed Box  
LL2225**



**Style  
Printed Box  
LL2223**



**Ambassador  
Printed Box  
LL2224**

# Contents

ECO	4
LIFESTYLE	30
BAGS	39
DRINKWARE	47
HOME	60
TECHNOLOGY	69
GIFT SETS	87
PACKS	100
CONFECTIONERY	107
OFFICE	115
HEALTH	138
NOVELTIES	146

**LL code** - Items in stock and decorated in Australia.

**LN code** - decorated offshore.

IMPORTANT – Items illustrated are to show personalisation techniques and not to imply they have been supplied to owners of the particular trademark. Personalised items are only for sale to the owners of that particular trademark. Some colours may vary from shipment to shipment – if colour is critical request sample and include with order. Stipples and screens are best avoided on spot, screen and pad printed items. Refer artwork for acceptance prior to committing delivery (if in doubt). Whilst every effort is made to ensure accuracy of colours in these products, they should be used as a guide only. Product colours depicted may vary from actual products due to photographic reproduction. As we continue to improve our range changes may be made without prior notice.

# NEW ITEMS



**Typhoon Speaker**  
Page 8



**Oracle Round Bamboo Cable**  
Page 9



**Oracle Square Bamboo Cable**  
Page 9



**Stax Eco Lunch Box**  
Page 15



**Discus Bottle Opener**  
Page 16



**Solero Serving Board**  
Page 16



**Gala Cheese Board**  
Page 16



**Mosaic Cheese Board**  
Page 16



**Lager Bottle Opener**  
Page 16



**Napier Paper Pen**  
Page 18



**Aspen Paper Pen**  
Page 18



**Matador Bamboo Pen**  
Page 18



**Collage Drawing Set**  
Page 22



**Bamboo 30cm Ruler**  
Page 23



**Bamboo Toothbrush**  
Page 29



**Cosy Drink Cooler**  
Page 38



**Gelato Drink Bottle**  
Page 48



**Chat Drink Bottle**  
Page 48



**Mystique Vacuum Bottle**  
Page 49



**Gelato Drink Bottle with Bamboo Lid**  
Page 49



**Flair Coffee Cup**  
Page 53



**Taurus Coffee Cup**  
Page 55



**Vienna Cup with Snap Lid**  
Page 56



**Vienna Eco Cup with RPET Band**  
Page 56



**Vienna Cup with RPET Band and Flip Lid**  
Page 56

# NEW ITEMS



Vienna Cup with RPET & Silicone Lid Page 56



Vienna Cup with RPET Band & Snap Lid Page 56



Vienna Cup with Cork Band & Snap Lid Page 56



Stainless Steel Hip Flask Page 59



Exocet Tape Measure Page 68



Stellar Sports Watch Page 70



Mustang Sports Watch Page 70



Neon Bluetooth Speaker Page 72



Equinox Headphones Page 72



Crystal Wireless Charger Page 75



Trinity Recycled Apron Page 66



Dune Wireless Charger Page 75



Viper Bamboo Power Bank Page 78



Arya Power Bank Page 78



Kinetic Square Glow Cable Page 81



Kinetic Round Glow Cable Page 81



Digital Luggage Scales Page 83



Fusion Gift Set Page 99



Refresh Travel Pack Page 105



Breath Mints in Slider Page 108



Assorted Fruit Rings Page 114



Supra 4 Colour White Pen Page 120



Capella A4 Notebook Page 130



Astro Hard Cover Notebook Page 130



Astro Soft Cover Notebook Page 130



Milko Notepad With Pen Page 132



Venture Snowy A5 Notebook Page 134



Wheat Badge Holder Page 137





# eco

We are focused on supplying sustainable solutions for our customers by offering eco-friendly alternatives for brand awareness.





**Vienna Eco Coffee Cup**  
LLO413

- 320ml glass reusable coffee cup.
- With silicone sleeve and eco comfort lid.
- Lid made from a 50% blend of wheat fibre and polypropylene.



**Vienna Eco Coffee Cup**  
With Cork Band  
LLO414

- 320ml glass reusable coffee cup.
- Eco comfort lid made from a 50% blend of wheat fibre and polypropylene.
- Borosilicate glass is known for its durability.



**Kick Eco Coffee Cup**  
LLO453

- 320ml reusable coffee cup.
- Made from 50% blend of wheat fibre and BPA free polypropylene.
- Includes heat resistant silicone sleeve and screw on lid.



**Aroma Eco Coffee Cup**  
with Eco Lid  
LLO426

- 350ml double walled hot/cold cup with secure fitting comfort lid.
- Cup & lid made from a 50% blend of wheat fibre and BPA free polypropylene.



**Aroma Eco Coffee Cup**  
with Comfort Lid  
LLO418

- 350ml double walled hot/cold cup with secure fitting comfort lid.
- Cup made from a 50% blend of wheat fibre and BPA free polypropylene.



**Aroma Eco Coffee Cup**  
with Handle Lid  
LLO419

- 350ml double walled hot/cold cup with secure fitting handle lid.
- Cup made from a 50% blend of wheat fibre and BPA free polypropylene.





**Vienna Coffee Cup with Cork Band**  
LLO415

- 320ml glass reusable coffee cup.
- Heat-resistant cork band & secure fitting lid.
- Made from Borosilicate glass known for its durability.



**Avenue Wheat Fibre Cup & Spoon**  
LL6483

- 330ml reusable coffee cup with integrated spoon holder in the handle.
- Ideal for enjoying hot beverages like coffee, tea, soup and hot chocolate.



**Vulcan Wheat Fibre Mug**  
LLO463

- 300ml reusable coffee cup.
- Made from a 50% blend of wheat fibre and BPA free polypropylene.
- For logo longevity hand washing is recommended.



**Viper Bamboo Power Bank**  
LLO596

- 5000mAh Powerbank.
- Made from natural bamboo.
- 4 graduated LED indicators shows the charge level.



**Sabre Eco Wireless Power Bank**  
LL9211

- 10,000mAh wireless charger.
- Made from 50% wheat fibre.
- 4 graduated LED indicators shows the charge level.
- Can be charged up to 300 times.







**Spectre Eco Wireless Charger Hub**  
LLO280

- 5W wireless charger/hub with two USB A ports.
- Made from 50% wheat fibre a renewable and biodegradable material.



**Solstice Eco Wireless Charger**  
LLO282

- Wireless charger, compatible with phones that offer wireless charging.
- Made from 50% wheat fibre.



**Proton Eco Wireless Charger**  
LLO221

- Wireless charger, compatible with phones that offer wireless charging.
- Made from 50% wheat fibre.



**Arc Eco Round Wireless Charger**  
LLO222

- Round inductive wireless charger, compatible with phones that offer wireless charging.
- Made from 50% wheat fibre.



**Arc Eco Square Wireless Charger**  
LLO226

- Square inductive wireless charger, compatible with phones that offer wireless charging.
- Made from 50% wheat fibre.



**Freedom Bamboo Bluetooth Speaker**  
LL9460

- 3W bamboo bluetooth / cable connect speaker with metal grill.
- Clear sound, A2DP bluetooth.
- FM radio and hands free function.





**Gig Bamboo Bluetooth Speaker**  
LL9462

- 3W square, bamboo bluetooth / cable connect speaker with metal mesh grill.
- Soft EVA rubber base covers a wheat fibre base with colour changing LED light feature.



**Fresco Speaker & Wireless Charger**  
LL9465

- Bluetooth speaker with bamboo veneer body and wireless charger.
- The charger is 15W so fast charge capable with using a fast charge cable and connected to a 9V/2A power source.



**Typhoon Speaker & Wireless Charger**  
LL9467

- Round bluetooth speaker.
- Made from recycled ABS.
- Veneer body and wireless charger.



**Bamboo Arc Wireless Charger Round**  
LL0220

- Inductive wireless charge pad compatible with phones that offer wireless charging.
- Made from bamboo.
- Includes inductive charging indicator.



**Bamboo Arc Wireless Charger Square**  
LL0224

- Inductive wireless charge pad compatible with phones that offer wireless charging.
- Made from bamboo.
- Includes inductive charging indicator.



**Bamboo Ranger Fast Wireless Charger**  
LL0271

- Bamboo wireless charger suitable for Qi compatible phones with wireless charging.
- Capable of fast charge when connected to a power source of 9V/2.0A.





**Rascal Bamboo Tablet & Phone Stand**  
LL9736

- Lightweight, phone stand made from natural bamboo.
- Will display a smart phone or tablet horizontally or vertically.



**Bamboo USB Flash Drive 4GB**  
LL9602

- 4GB bamboo swivel flash drive.
- A grade memory. USB 2.0 chips.
- Data transfer speed is up to 480 Mbps.
- Will record and play HD & Full HD video.



**Apollo Bamboo Phone Stand**  
LL9079

- Compact phone stand made from natural bamboo with charging docking station.
- Supplied flat, with easy DIY assembly it can vertically or horizontally hold any phone.



**Recycled PET Microfibre Lens Cloth**  
LN629

- 250gsm/120 denier microfibre lens cloth made from recycled PET with straight or zig zag cut edges.
- Excellent for oil and moisture absorption.



**Oracle Round Bamboo Charging Cable**  
LL9436

- 4 in 1 cable with natural bamboo cable housing and wheat straw cables/connectors.
- Includes USB A, Type C, Micro USB & iOS connectors.



**Oracle Square Bamboo Charging Cable**  
LL9437

- 4 in 1 cable with natural bamboo cable housing and wheat straw cables/connectors.
- Includes USB A, Type C, Micro USB & iOS connectors.





**Montana Tote Bag**  
LL7037

- Tote bag made from 1mm RPET felt with long polyester webbing handles.
- RPET material is produced from recycled PET 2L water bottles.



**Montana Gusset Tote Bag**  
LL7041

- Tote bag made from 1mm RPET felt with long polyester webbing handles and bottom gusset.
- RPET material is produced from recycled PET 2L water bottles.



**Savvy Recycled PET Bag**  
LL519

- Reusable, folding shopping bags.
- Made from 2L recycled PET bottles.
- Incorporates a handy pouch for ease of storage and additional decoration area.



**Montana Satchel**  
LL7027

- Zippered satchel made from 1mm RPET felt with webbing carry handle.
- RPET material is produced from recycled PET 2L water bottles.
- Ideal for keeping documents secure.



**Corsica Utility Case**  
LL4632

- Calico utility bag with contrast cork panel and zip closure.
- Use to hold stationery, cables, first aid and travel items.



**Scenic Utility Pouch**  
LL7347

- Calico utility bag with contrast cork panel and zip closure.
- Large internal compartment to use as a toiletry bag or to hold stationery and cables.





**Giant Bamboo Carry Bag with Double Handles – 100gsm**  
LL516

- Giant double handle non-woven bamboo carry bag with large gussets.
- Made from bamboo, one of the world's fastest-growing plants.



**Short Handle Bamboo Tote Bag – 100gsm**  
LL514

- Double short handle bamboo tote bag.
- Made from bamboo, one of the world's fastest-growing plants.
- Bamboo is renewable and biodegradable.



**Long Handle Bamboo Conference Bag – 100gsm**  
LL515

- Double long handle bamboo tote bag.
- Made from bamboo, one of the world's fastest-growing plants.
- Bamboo is renewable and biodegradable.



**Montana Cosmetic Bag**  
LL7031

- Zippered cosmetic/utility pouch made from 2mm RPET felt.
- RPET material is produced from recycled PET 2L water bottles.



**Montana Utility Case**  
LL7029

- Utility pouch made from 2mm RPET felt.
- RPET material is produced from recycled PET 2L water bottles.
- Used to hold stationery or tech items.



**Montana Sunglass Pouch**  
LL4559

- Sunglass pouch made from 2mm RPET felt.
- RPET material is produced from recycled PET 2L water bottles.





**Express Paper Bag Small**  
LL547

- Small kraft paper bag with 2 strong rope handles and gussets.
- Biodegradable large decoration area and eco friendly.



**Express Paper Bag Medium**  
LL548

- Medium kraft paper bag with 2 strong rope handles and gussets.
- Biodegradable large decoration area and eco friendly.



**Express Paper Bag Large**  
LL549

- Large kraft paper bag with 2 strong rope handles and gussets.
- Biodegradable large decoration area and eco friendly.



**Express Paper Bag Extra Large**  
LL562

- Extra large kraft paper bag with 2 strong rope handles and gussets.
- Biodegradable large decoration area and eco friendly.





**Urban Shopper Folding Calico Bag**  
LL529

- Double long handle calico tote bag with gusset that folds into an unsealed pouch attached to the top of the bag.
- Calico is a renewable resource.



**Scoot Calico / Mesh Tote Bag**  
LL528

- Reusable, natural cotton mesh bag with calico base.
- Light weight and super strong.
- With 2 long handles and bottom gusset.



**Calico Double Short Handle Tote Bag – 140gsm**  
LL500

- Double short handle calico tote bags.
- Ideal for environmental projects as calico is a renewable resource.



**Calico Double Long Handle Conference Bag – 140gsm**  
LL512

- Double long handle calico tote bag.
- Ideal for environmental projects as calico is a renewable resource.



**Supa Shopper Short Handle Calico Bag – 130gsm**  
LL503

- Large calico bag with bottom gusset and two handles.
- Calico is a renewable resource and bags are continually re-used.



**Calico Library Back Pack with Drawstrings – 200gsm**  
LL506

- Calico backpack with double cotton rope drawstrings.
- Calico is a renewable resource and bags are continually re-used.





**Delish Eco Cutlery Set**

LL8787

- 3 piece cutlery set with push on lid.
- Includes full size fork, knife and spoon.
- Made from a 50/50 blend of wheat fibre and BPA free polypropylene.



**Delish Eco Cutlery Set in Calico Pouch**

LL8790

- 3 piece cutlery set in calico drawstring pouch.
- Includes full size fork, knife and spoon.
- Cutlery set made from a 50/50 blend of wheat fibre and BPA free polypropylene.



**Guru Wheat Fibre Combo Spoon**

LL8803

- Wheat fibre combo utensil of knife, fork and spoon.
- Features spoon at one end and a fork with a serrated knife-edge at the other.



**Banquet Cutlery Set**

LL8798

- 3 piece stainless steel cutlery set.
- Includes full size knife, fork and spoon packed in calico drawstring pouch.
- Eco friendly alternative to plastic cutlery.



**Savour Cutlery Set**

LL8808

- 3 piece, stainless steel cutlery set with bamboo handles in drawstring calico pouch.
- Includes knife, fork, spoon.



**Miso Bamboo Cutlery Set**

LL8794

- 3 piece bamboo cutlery set in calico drawstring pouch.
- Includes full size knife, fork and spoon.







**Stax Eco Lunch Box**  
LL6366

- 2 tier, wheat fibre lunch box.
- Bamboo knife, fork and spoon retained in the top compartment.



**Stax Eco Lunch Box with Phone Holder Lid**  
LL6362

- Convenient phone holder in lid.
- 2 tier, wheat fibre lunch box.
- Bamboo knife, fork and spoon retained in the top compartment.



**Bermuda Lunch Box**  
LL6369

- Stainless steel lunch box with a natural bamboo lid.
- Includes 3 piece natural bamboo cutlery set with elastic strap.



**Mojito Straw Set**  
LL8782

- Set of 1 x straight, 1 x bent straw with cleaning brush in calico drawstring pouch.
- Straws are made from stainless steel.



**Fjord Eco Ice Scraper**  
LL2809

- Sturdy ice scraper with serrated edge for removing ice and snow from car windscreens or the inside of freezers.
- Perfect for frosty winter mornings.



**Hercules Kitchen Scales**  
LL6370

- Digital kitchen scales with bamboo.
- 5kg capacity.
- Digital display with non slip rubber feet.
- Powered by 2 x AAA batteries included.





**Mosaic Bamboo Slate Cheese Board**  
LL6712

- Bamboo cheese board with a removable slate insert and four cheese knives made of bamboo and stainless steel stored in the board.



**Solero Bamboo Serving Board**  
LL6716

- Bamboo cutting board with integrated handle and hole for hanging.
- Can be used as a cheese board, pizza board or a charcuterie board.



**Gala Bamboo Slate Cheese Board**  
LL6715

- Bamboo cheese board with a slide-opening lid and a removable slate insert.
- It comes with four cheese knives made of bamboo and stainless steel.



**Discus Bamboo Bottle Opener Coaster**  
LL4998

- Round bamboo bottle opener with two magnets on back to attach to metal.
- It's comfortable round shape makes it easy to grip and open bottles with ease.



**Cyborg Bottle Opener**  
LL6710

- Heavy duty bottle opener with bamboo handle.
- Opens crown seal tops.



**Lager Bottle Opener Phone Stand**  
LL6918

- Combination phone stand and bottle opener that attaches to your phone.
- Made from durable aluminium and bamboo.





**Arctic Bottle Opener**  
LL3790

- Bottle opener with magnet for storage.
- Made from a 50/50 blend of wheat fibre and BPA free polypropylene.
- Handy slot for opening ring pull cans.



**Villa Cork Round Coaster**  
LL3483

- Natural round cork coaster.
- 100% organic material composed of the bark of the cork oak tree.



**Villa Cork Square Coaster**  
LL3484

- Natural square cork coaster.
- 100% organic material composed of the bark of the cork oak tree.



**Villa Cork Square Coaster Set of 4**  
LL3487

- Natural square cork coasters in cardboard box.
- Absorbs spills and condensation as well as being heat resistant.
- 100% organic material.



**Villa Cork Round Coaster Set of 4**  
LL3486

- Natural round cork coasters in cardboard box.
- Absorbs spills and condensation as well as being heat resistant.
- 100% organic material.



**Tropic Bamboo Coaster Set**  
LL3516

- Set of 6 natural bamboo coasters in holder.
- Ideal to serve your drinks.
- Offers protection to furniture in your home and workplace.





**House Bamboo Zinc Keytag**  
LL3522

- House shaped keytag with 32mm split ring.
- Made from nickel plated cast zinc with a natural bamboo insert.



**Circle Bamboo Zinc Keytag**  
LL3524

- Circle shaped keytag with 32mm split ring.
- Made from nickel plated cast zinc with a natural bamboo insert.



**Rectangle Bamboo Zinc Keytag**  
LL3526

- Rectangle shaped keytag with 32mm split ring.
- Made from nickel plated cast zinc with a natural bamboo insert.



**Aspen Paper Pen**  
LL2039

- Recycled Paper barrel ballpoint pen with Gunmetal accents.
- Plastic button, tip & metal clip.



**Matador Bamboo Pen**  
LL2131

- Bamboo barrel ballpoint pen with a 50/50 blend of wheat fibre and polypropylene button, clip and tip.
- Push button action.



**Napier Paper Pen**  
LL3292

- Recycled Paper barrel ballpoint pen.
- Silver accents.





**Matador Cork Pen**  
LL209

- Push button pen.
- Barrel made from cork.
- Button, clip and tip made from wheat fibre.
- Black refill.



**Matador Eco Pen**  
LL202

- Cardboard barrel pen with wheat fibre button, clip and tip.
- Black refill.



**Matador Cardboard Pen**  
LL200

- Push button unbleached cardboard barrel pen.
- Black refill.



**Stratos Cardboard Pen**  
LL115

- Cardboard cap and barrel pen.
- Pull off cardboard cap.
- Eco symbol printed on cap.



**Napier Bamboo Pen**  
LL3274

- Push button bamboo barrel pen with silver accents.
- Black refill.



**Bamboo Pen**  
LL2021

- Eco friendly bamboo push button pen.
- Black refill.



**Supra 4 Colour Pen**  
LL0326

- Push button pen made from a 50/50 blend of wheat fibre and polypropylene.
- 4 different ink colours black, red, green, and blue with a grey grip.



**Mop Top Eco Pen**  
LL4604

- Eco mop top pen with stylus.
- Microfibre hair.
- Barrel & head made from 50/50 wheat fibre and BPA free polypropylene.



**Viva Eco Pen**  
LL436

- Push button pen with silver accents.
- Made from a 50/50 blend of wheat fibre and polypropylene.
- Black refill.



**Napier Eco Pen**  
LL3283

- Push button pen with silver accents.
- Made from a 50/50 blend of wheat fibre and polypropylene.
- Black refill.





**Matador Eco Pen**  
LL202

- Cardboard barrel pen with wheat fibre button, clip and tip.
- Black refill.



**Matador PLA Eco Pen**  
LL212

- Push button cardboard barrel pen.
- PLA button, clip & tip.
- PLA is a biodegradable plastic.
- Black refill.



**Recycled Highlighter**  
LL4245

- Highlighter case made from recycled plastic.



**Raptor RPET Pen**  
LL2044

- Push button pen made from RPET (recycled plastic bottles).
- Black refill.



**Aspen Bamboo Pen**  
LL2033

- Bamboo barrel push button pen with metal accents.
- Black refill.



**Hornet Pen**  
LL2037

- Bamboo barrel with chrome button and tip.
- Matching coloured clip and grip.
- Push button pen.
- Black refill.



**Aspen Bamboo Pen with Stylus**  
LL2035

- Push button pen made from bamboo with metal accents.
- Includes rubber stylus for touch screens.
- Black refill.



**Viva Bamboo Pen**  
LL435

- Bamboo barrel push button pen with silver accents.
- Comfortable to use.
- Black refill.





### Codex Cork Sticky Notes

LL3062

- Cork covered spiral bound notebook consisting of 6 layers.
- 5 layers of repositionable notes 75 x 50mm (25 leaves).



### Panorama Coloured Pencil Set

LL1909

- Set of 12 full sized sharpened natural coloured pencils in timber case with sliding lid.
- The lid has a 20cm metric/8" imperial ruler markings on 1 side.



### Cork Avalon Pencil Case

LL4634

- Natural cork utility / pencil case with handy cork strap and zip closure.
- Used to hold stationery, tech items, medication, first aid items, receipts etc.



### Amazon Notebook

LL9757

- Bamboo cover notebook with 70 leaves, 140 spiral bound recycled lined pages (70gsm).
- Includes bamboo/silver push button pen.
- Elastic closure.



### Safari Bamboo Notebook

LL3065

- Eco friendly bamboo veneer cover notebook with 80 leaves, 160 recycled lined pages (70gsm).



### Twiggy Bamboo Notebook

LL3068

- Flip up, bamboo veneer cover notebook with 80 leaves, 160 white lined pages (70gsm).





**Element Stationery Set**  
LL0726

- Stationery set of 15cm wooden ruler, wooden pencil sharpener, 2 x wooden pencils, cardboard pen and eraser.
- Case made from a 50% wheat fibre.



**Stanford Stationery Set**  
LL21341

- Bamboo stationery set packed in PVC pencil case with zipper.
- Includes notepad, bamboo pencil sharpener, timber pencils, eraser and bamboo ruler.



**Yale Stationery Set**  
LL2134

- Bamboo stationery set packed in cello bag.
- Includes 20 sheet notepad, bamboo pencil sharpener, wooden timber pencils, eraser and bamboo ruler.



**Lumix Bamboo Sticky Notes**  
LL3073

- Mini sticky notes book with bamboo cover.
- Contains 5 blocks of coloured noteflags (25 leaves), 1 block of yellow notes 75 x 50mm (25 leaves) and 1 block of yellow notes 98 x 75mm (50 leaves).



**Circle Bamboo Bookmark**  
LL8858

- Circle 13cm bamboo bookmark ruler.
- 1 block of repositionable notepads with 25 leaves (40mmL x 40mmH) and 5 blocks of assorted adhesive noteflags with 25 leaves per colour.



**Collage 12 Pencil Drawing Set**  
LL8393

- Drawing set with 12 coloured pencils, a wooden pencil sharpener, and a pad of 50 sheets of 80gsm white paper.
- Provides a convenient and complete solution for drawing and colouring.







**Script Stationery Set**  
LL0728

- Stationery set in unbleached recyclable cardboard box.
- 3 x natural pencils, 15cm timber ruler, white eraser & natural pencil sharpener.



**Monet Pencil Set**  
LL192

- 6 half sized sharpened coloured pencils in unbleached cardboard box with lid.
- Assorted colour colouring pencils feature natural timber case.



**Tourer Pencil Set**  
LL1904

- Set of 6 half size sharpened coloured pencils in recyclable unbleached cardboard tuck box.
- Assorted colour colouring pencils feature natural timber case.



**Axis 30cm Wooden Ruler**  
LL2327

- 30cm ruler.
- Made from beech wood.



**Bamboo 30cm Ruler**  
LL2328

- 30cm ruler manufactured from Eco-friendly Bamboo.
- Metric measurements printed on the top of ruler.



**Eco 30cm Ruler**  
LL19

- 30cm ruler with metric and imperial calibrations.



**Sharpened Timber Pencil**  
LL10

- Round full length sharpened pencils.





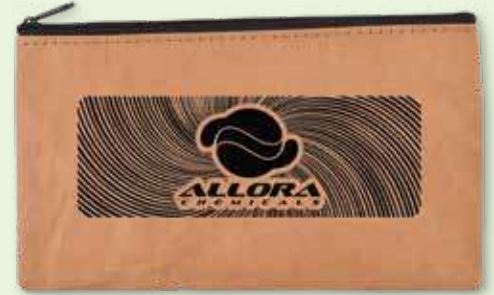
**Pablo Pencil Set**  
LL1914

- Set of 6 mini coloured pencils in rectangular natural kraft box with removable lid.



**Sketch Pavement Chalk**  
LL8909

- 6 piece set of large sized chalk sticks.
- Suitable for pavement or blackboards.
- Non toxic and dustless.



**Kraft Paper Pencil Case**  
LL7014

- Kraft paper zippered utility pouch.
- Light weight and durable.
- Hold stationery, cosmetics, cables, first aid and travel items.
- Black zipper.



**Cardboard Pen Sleeve**  
LL0512

- Cardboard pen sleeve.
- Pocket clip cutaway allows for a nice pen presentation.



**Black Cardboard Pen Box**  
LL0501

- Black cardboard pen box with slide off sleeve.



**Chippy Carpenters Pencil**  
LL22

- Unsharpened timber carpenters pencil.



**Recycled Newspaper Pencil**  
LL1007

- Round full length sharpened pencils.





**Mighty Pencil Set**  
LL1907

- Set of 10 coloured full length sharpened colouring pencils, in natural cardboard box with window.
- Recommended for colouring in books.



**Activity Pencil Set**  
LL8152

- Set of 6 assorted half size, sharpened, coloured timber case pencils in cardboard box, with sharpener and 10 colouring-in sheets.



**Rembrandt Pencils in Tube**  
LL193

- 12 assorted half size sharpened coloured pencils in unbleached cardboard tube.
- Transparent plastic top with pencil sharpener.



**Dali Crayon Set**  
LL196

- 8 assorted non toxic crayons in white display box.



**Da Vinci Crayon Set**  
LL8905

- 30 assorted non toxic crayons in unbleached cardboard tube.



**Mural Pencil/Crayon Set**  
LL1911

- Set of 10 coloured mini pencils and 9 crayons in a natural kraft tuck box with window.





**Savannah Notebook**  
LL0950

- Unbleached cardboard cover (600gsm) spiral bound notebook.
- 70 sheets, 140 lined cream pages (70gsm).



**Savannah Notebook with Matador Pen**  
LL0951

- Unbleached cardboard cover (600gsm) spiral bound notebook with Matador pen.
- 70 sheets, 140 lined cream pages (70gsm).



**Savannah Notebook with Eco Matador Pen**  
LL0952

- Unbleached cardboard cover (600gsm) spiral bound notebook with Matador eco pen.
- 70 sheets, 140 lined cream pages (70gsm).



**Stone Paper Notebook**  
LL9753

- Cardboard cover spiral bound notebook.
- 136 lined pages made from stone/rock.
- Tough paper works in extreme conditions.
- Recycled symbol die cut on cover.



**Venture A5 Natural Notebook**  
LL5091

- Natural cover A5 notebook with neutral colour elastic strap, pen loop and page marker.
- 80 leaves, 160 lined white pages (70gsm).



**Venture A5 Natural Notebook with Matador Pen**  
LL5092

- Natural cover A5 notebook with neutral colour elastic strap, pen loop and page marker.
- Includes cardboard barrel pen.
- Notebook includes 160 lined white pages.





**Circle Bamboo Bookmark**  
LL8858

- Circle shaped 13cm/5inch bamboo bookmark ruler.
- 1 block of repositionable notepads with 25 leaves.



**Circle Bookmark**  
LL8860

- Circle shaped 13cm/5inch cardboard bookmark ruler.



**Business Card Bookmark**  
LL8868

- Business card shaped 13cm/5inch cardboard bookmark ruler.



**Codex Spiral Sticky Notes**  
LL8829

- Unbleached cardboard cover, spiral bound notebook consisting of 6 layers.
- 5 layers of repositionable notepads.
- 1 layer of 5 different colour adhesive note flags.



**Eco Pack**  
LL8292

- Gift pack of Byron produce bag, Stax lunch box and Vulcan wheat fibre coffee cup.



**Croc Magnetic Clip**  
LL2779

- Heavy duty clip with strong magnet.
- Attaches to filing cabinets and most metal surfaces.





**Zippy Wooden Yo-Yo**  
LL2885

- Natural cherry wood Yo-Yo with string.



**World's Smallest Pig Eco Coin Bank**  
LL3600

- Coin bank with removable coin release bung at base.
- Made from a 50/50 blend of wheat fibre and polypropylene.



**Tornado Wheat Fibre Tape Measure**  
LL5033

- 1.5m retracting tape measure with push button retract action.
- Made from a 50% blend of wheat fibre.
- Tape - metric and imperial calibrations.



**Aussie Recycled Flyer**  
LL9136

- Round flying disks.
- Made from a variable ratio of recycled and raw polypropylene.
- Made in Australia.



**Chase Recycled Playing Cards**  
LL0030

- Set of playing cards made from recycled cardboard.
- Each deck is 54 cards (including jokers).
- Your design printed on the box.



**Transit Bamboo Luggage Tag**  
LL4836

- Natural bamboo luggage tag with robust strap for attaching to bags.
- Personal details label on one side.





**Bamboo Sunglasses**

LL4562

- Classic style sunglasses with tinted lenses.
- Polycarbonate frame and bamboo arms.
- Rated to UV400 providing UVA and UVB protection.



**Bamboo Toothbrush**

LL0335

- Medium grade, natural bamboo toothbrush.
- Nylon bristles that are durable and effective for cleaning.



**Lynx Wheat Fibre Comb**

LL3515

- Eco hair comb.
- Perfect for use on all hair types.
- Comfortable to hold handle.
- Made from 50% wheat fibre.



**Wheat Straw Retractable  
Badge Holder**

LL452

- Retractable name badge holder made from wheat straw.
- Extends to 90cm.



**Spa Bamboo Brush**

LL1047

- Spa bamboo hair brush, makes brushing all hair types a breeze.
- Each bristle has a smooth head and gently massages the scalp.



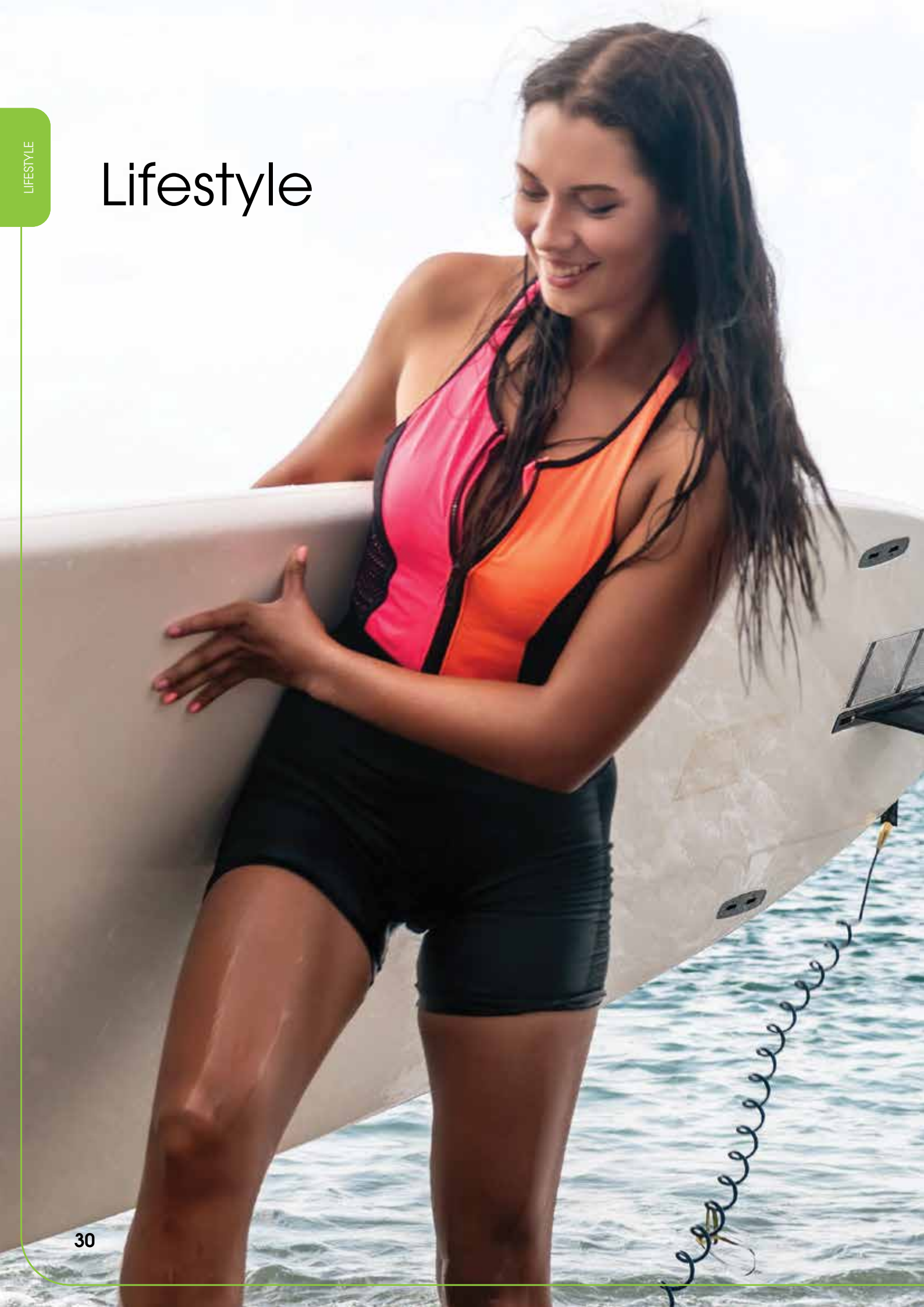
**Pamper Bamboo Emery Board**

LL4838

- Bamboo nail file perfect for keeping nails shaped and smooth.



# Lifestyle







**Sumo Lunch Cooler**  
LL2315

- Aluminium foil lined 3.5 litre cooler bag with carry handle.
- Front flap is secured with 2 velcro strips.
- Convenient carry pocket on the front.



**Alpine Cooler Bag**  
LL2320

- 4.5 litre cooler bag made from 210D/PVC material with aluminium foil lined insulation.
- Double zip top closure.
- Convenient front slip pocket.



**Sub Zero Cooler Bag**  
LL2330

- 8 litre cooler bag made from foil lined and insulated 600D/PVC material.
- Black colour zipper with 2 zips.
- Pocket on the front of the bag.



**Tundra Cooler Shopping Bag**  
LL521

- 20 litre cooler shopping bag manufactured from 80gsm non-woven material with aluminium foil lined insulation.
- Zippered top closure with 2 zips.



**Ocean 10 Litre Dry Bag**  
LL7505

- 10 litre PVC waterproof dry bag.
- Buckle closure that forms a handle when the bag is sealed.
- Keep items dry on outings and boat trips.



**Leisure Picnic Blanket**  
LL8365

- Woven polar fleece polyester picnic blanket with waterproof peva backing.
- Folds for easy carriage.
- Black flap on front holds blanket together with velcro.





**Gala Bamboo Slate Cheese Board**  
LL6715

- Bamboo cheese board with a slide-opening lid and a removable slate insert.
- It comes with four cheese knives made of bamboo and stainless steel.



**Mosaic Bamboo Slate Cheese Board**  
LL6712

- Bamboo cheese board with a removable slate insert and four cheese knives made of bamboo and stainless steel stored in the board.



**Solero Bamboo Serving Board**  
LL6716

- Bamboo cutting board with integrated handle and hole for hanging.
- Can be used as a cheese board, pizza board or a charcuterie board.



**Stax Eco Lunch Box with Phone Holder Lid**  
LL6362

- Convenient phone holder in lid.
- 2 tier, wheat fibre lunch box.
- Bamboo knife, fork and spoon retained in the top compartment.



**Stax Eco Lunch Box**  
LL6366

- 2 tier, wheat fibre lunch box.
- Bamboo knife, fork and spoon retained in the top compartment.



**Bermuda Lunch Box**  
LL6369

- Stainless steel lunch box with a natural bamboo lid.
- Includes 3 piece natural bamboo cutlery set with elastic strap.





**Zest Lunch Box**  
LL6185

- 3 piece food/storage container with locking lid.
- Steam release lid vent.
- Separate internal tray.



**Fling Thing Folding Flyer**  
LL2759

- Foldable flyer that packs into pouch.



**Fling Thing Folding Flyer**  
LN2759

- Foldable flyer that packs into pouch.



**Aussie Recycled Flyer**  
LL9136

- Round flying disks.
- Made from a variable ratio of recycled and raw polypropylene.
- Made in Australia.



**Frequent Flyers**  
LL9138

- Colourful round flying disks.



**Donut Flyers**  
LL9140

- Round flexible flying disc.





### Sizzle Foam Visor

LL1822

- 2.5mm thick foam visor.
- Adjustable to 6 positions.
- Fits approx. age 10 to adults.



### Horizon Sunglasses

LL4560

- Classic style sunglasses with tinted lenses rated to UV400 providing UVA and UVB protection.
- Strong polycarbonate frames and lenses are durable and offer all day comfort.



### Bamboo Sunglasses

LL4562

- Classic style sunglasses with tinted lenses.
- Polycarbonate frame and bamboo arms.
- Rated to UV400 providing UVA and UVB protection.



### Chill Sports Towel

LL8370

- Keep up to 15 degrees cooler in the heat with the chill cooling towel.
- Simply wet the towel and wring out.
- Place the towel around your neck or head.
- Supplied folded into a zip lock pouch.



### Action Paddle and Ball Sets

LL3114

- Set of 2 paddles with ball in black drawstring pouch.
- Get active at the beach, park and outdoors.



### Pagoda Telescopic Stool

LL8355

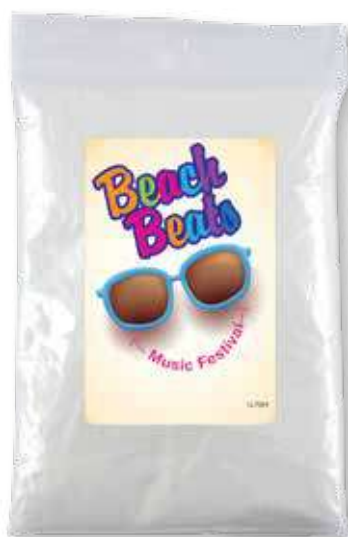
- Telescopic folding stool that's lightweight, durable and easy to carry.
- Only weighs 1.25kg.
- Holds up to 150kg.
- 12 height positions.





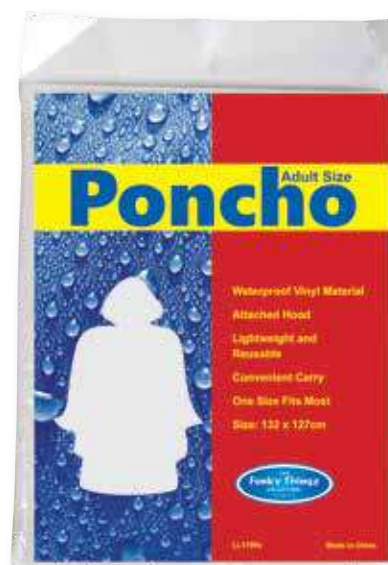
**Storm Poncho**  
LL8833

- Clear adult size, reusable poncho packed in canister with flip lid.
- Carabiner clip included.



**Monsoon Poncho**  
LL7064

- Lightweight, reusable clear poncho (0.015mm thick) with hood in zip lock bag.
- One size fits all.



**Hurricane Poncho**  
LL1799

- Clear reusable poncho packed in clear polybag.
- Standard insert as shown.



**Hi Bounce Ball**  
LL3014

- All-purpose hollow rubber hi bounce ball.
- Suitable for games, handball, catching, throwing, bouncing and an exercise ball.



**Hi Bounce Tennis Ball**  
LL3011

- Hollow high bounce tennis ball with gloss finish.
- Suitable for games, handball, catching, throwing, bouncing and an exercise ball.



**Hi Bounce Soccer Ball**  
LL3012

- Hollow high bounce soccer ball with gloss finish.
- Suitable for games, handball, catching, throwing, bouncing and an exercise ball.





**Summer Beach Pack**

LL6000

- Summer pack of paddle / bat & ball set, Chill cooling towel in pouch and Horizon sunglasses packed in black drawstring bag.



**Gold Coast Pack**

LL6004

- Gold coast pack of Tahiti drink bottle, horizon sunglasses packed in short handle cotton bag.



**Flinders Reusable Eco Pack**

LL8291

- Eco pack containing Savvy recycled PET bag, Kick cup and stainless steel straw set.



**Adventure Pack**

LL8288

- Adventure pack of pronto drawstring bag, rio drink bottle and horizon sunglasses.



**Stamina Resistance Bands**

LL8842

- Three levels of strength resistance bands.
- This set includes 3 bands, a carry bag and exercise guide.
- Light, medium and heavy resistance level bands included.



**Blast Fan**

LL8038

- Hand held fan with coloured handle.
- Ideal for keeping cool and waving at sporting events.





**Breeze Fan**  
LN8040

- Hand held fan with coloured handle and your full coverage custom design on solid white blade.
- Ideal for keeping cool and waving at sporting events.



**Firenze Luggage Tag**  
LN0015

- PVC luggage tag with clear spaghetti strap.
- Printed address label insert on back under clear PVC panel.
- Coloured front with grey back.



**Transit Bamboo Luggage Tag**  
LL4836

- Natural bamboo luggage tag with robust strap for attaching to bags.
- Personal details label on one side.



**Roma Luggage Tag**  
LN0010

- Luggage tag with black flexi strap with moulded PVC 2D or 3D custom design on front.
- Back has black rigid plastic frame with clear window for contact details.



**Venezia Luggage Tag**  
LL3024

- Suitcase shape luggage tag with PVC spaghetti loop strap and white hidden address panel.
- Coloured front panel with black back and strap.



**Monte Carlo Luggage Tag**  
LL001

- Luggage tag with clear PVC window and spaghetti loop strap.
- PVC window on back holds contact detail insert (included).





### Naples Luggage Tag LN0017

- Self locking PVC luggage tag.
- Printed address label on back.



### Digital Luggage Scales LL4834

- Weigh your bags before you leave with this digital luggage scale.
- Switch between grams, kilos, pounds or ounces.
- Maximum Capacity 50kg.
- Powered by 2 AAA Batteries.



### Surf Stubby Cooler LL2295

- 3mm Neoprene stubby and can cooler.
- Supplied flat for easy distribution and storage.



### Cosy Stainless Steel Drink Cooler LL0980

- Double wall stainless steel drink cooler.
- Suitable for 375ml cans and most bottles.
- Removable screw top allows you to securely hold your can or bottle.
- Keeps drinks cooler for longer than a traditional stubby holder.





# Bags

BAGS





**Sumo Lunch Cooler**  
LL2315

- Aluminium foil lined 3.5 litre cooler bag with carry handle.
- Front flap is secured with 2 velcro strips.
- Convenient carry pocket on the front.



**Alpine Cooler Bag**  
LL2320

- 4.5 litre cooler bag made from 210D/PVC material with aluminium foil lined insulation.
- Double zip top closure.
- Convenient front slip pocket.



**Sub Zero Cooler Bag**  
LL2330

- 8 litre cooler bag made from foil lined and insulated 600D/PVC material.
- Black colour zipper with 2 zips.
- Pocket on the front of the bag.



**Tundra Cooler Shopping Bag**  
LL521

- 20 litre cooler shopping bag manufactured from 80gsm non-woven material with aluminium foil lined insulation.
- Zippered top closure with 2 zips.



**Montana Satchel**  
LL7027

- Zippered satchel made from 1mm RPET Felt with webbing carry handle.
- RPET material is produced from recycled PET 2L water bottles.
- Ideal for keeping documents secure.



**Montana Cosmetic Bag**  
LL7031

- Zippered cosmetic/utility pouch made from 2mm RPET Felt.
- RPET material is produced from recycled PET 2L water bottles.





**Montana Utility Case**  
LL7029

- Utility pouch made from 2mm RPET Felt.
- RPET material is produced from recycled PET 2L water bottles.
- Used to hold stationery or tech items.



**Montana Sunglass Pouch**  
LL4559

- Sunglass pouch made from 2mm RPET Felt.
- RPET material is produced from recycled PET 2L water bottles.



**Montana Tote Bag**  
LL7037

- Tote bag made from 1mm RPET Felt with long polyester webbing handles.
- RPET material is produced from recycled PET 2L water bottles.



**Montana Gusset Tote Bag**  
LL7041

- Tote bag made from 1mm RPET Felt with long polyester webbing handles and bottom gusset.
- RPET material is produced from recycled PET 2L water bottles.



**Ocean 10 Litre Dry Bag**  
LL7505

- 10 Litre PVC waterproof dry bag.
- Buckle closure that forms a handle when the bag is sealed.
- Keep items dry on outings and boat trips.



**Savvy Recycled PET Bag**  
LL519

- Reusable, folding shopping bags.
- Made from 2L recycled PET bottles.
- Incorporates a handy pouch for ease of storage and additional decoration area.





### Urban Shopper Folding Calico Bag LL529

- Double long handle calico tote bag with gusset that folds into an unsealed pouch attached to the top of the bag.
- Calico is a renewable resource.



### Scoot Calico / Mesh Tote Bag LL528

- Reusable, natural cotton mesh bag with calico base.
- Light weight and super strong.
- With 2 long handles and bottom gusset.



### Calico Double Short Handle Tote Bag – 140gsm LL500

- Double short handle calico tote bags.
- Ideal for environmental projects as calico is a renewable resource.



### Calico Double Long Handle Conference Bag – 140gsm LL512

- Double long handle calico tote bag.
- Ideal for environmental projects as calico is a renewable resource.



### Supa Shopper Short Handle Calico Bag – 130gsm LL503

- Large calico bag with bottom gusset and two handles.
- Calico is a renewable resource and bags are continually re-used.



### Calico Library Back Pack with Drawstrings – 200gsm LL506

- Calico backpack with double cotton rope drawstrings.
- Calico is a renewable resource and bags are continually re-used.





**Byron Mesh Produce Bag**  
LL524

- Mesh cotton produce bag with double cotton drawstrings.
- Calico patch sewn onto the centre for logo decoration.



**Corsica Utility Case**  
LL4632

- Calico utility bag with contrast cork panel and zip closure.
- Use to hold stationery, cables, first aid and travel items.



**Scenic Utility Pouch**  
LL7347

- Calico utility bag with contrast cork panel and zip closure.
- Large internal compartment to use as a toiletry bag or to hold stationery and cables.



**Pronto Drawstring Backpack**  
LL523

- Drawstring backpack featuring a storage pocket in the bottom with zipper access.
- The pocket folds into a storage pouch.
- Handy size for day trips or shopping.



**Sprint Folding Shopping Bag**  
LL518

- Reusable, polyester folding shopping bag.
- Integrated drawstring pouch in corner.
- Great for storing in handbag or in the car for shopping.



**Kit Drawstring Pouch**  
LL7026

- Drawstring pouch that is manufactured from 80gsm non woven material.





**Express Paper Bag Small**  
LL547

- Small kraft paper bag with 2 strong rope handles and gussets.
- Biodegradable large decoration area and eco friendly.



**Express Paper Bag Medium**  
LL548

- Medium kraft paper bag with 2 strong rope handles and gussets.
- Biodegradable large decoration area and eco friendly.



**Express Paper Bag Large**  
LL549

- Large kraft paper bag with 2 strong rope handles and gussets.
- Biodegradable large decoration area and eco friendly.



**Express Paper Bag Extra Large**  
LL562

- Extra large kraft paper bag with 2 strong rope handles and gussets.
- Biodegradable large decoration area and eco friendly.



**Cosi Wet Bag**  
LL7499

- High density nylon wet bag with white zipper and carry strap.
- Waterproof lining and zip closure.



**Coloured Cotton Double Long Handle Conference Bag**  
LL510

- Double long handle cotton tote bags.
- Ideal for environmental projects as cotton is a renewable resource.





**Coloured Cotton Double Short Handle Tote Bag**  
LL509

- Coloured short handle cotton tote bags.
- Ideal for environmental projects as calico is a renewable resource.



**Harvest Produce Bags**  
LL517

- 5 mesh drawstring bags in a drawstring pouch.
- Extra large bags measure 320 x 360mm.
- Perfect for fruit, vegetables, herbs and bulk goods.



**Enviro Supa Shopper Bag**  
LL502

- Double short handle poly / cotton tote bag.
- Compliments the environmental message of reusable bags.



**Get Crafty Calico Bag**  
LL531

- Your custom design printed on calico folding shopping bag.
- Great colouring pack includes 8 assorted non toxic coloured wax crayons.



**Colouring In Long Handle Tote Bag with Crayons**  
LL521

- Your custom design printed on white cotton long handle cotton bag.
- Great colouring pack includes 8 assorted non toxic coloured wax crayons.



**Colouring In Short Handle Calico Bag with Crayons**  
LL522

- Your custom design printed on calico short handle cotton bag.
- Great colouring pack includes 8 assorted non toxic coloured wax crayons.





### Colouring In Short Handle Tote Bag with Crayons

LL5520

- Your custom design printed on white cotton short handle cotton bag.
- Great colouring pack includes 8 assorted non toxic coloured wax crayons.



### Colouring In Short Handle Tote Bag with Pencils

LL5523

- Your custom design printed on white cotton short handle cotton bag.
- Includes 6 half size sharpened coloured pencils in unbleached cardboard box.



### Colouring In Long Handle Tote Bag with Pencils

LL5524

- Your custom design printed on white cotton long handle cotton bag.
- Includes 6 half size sharpened coloured pencils in unbleached cardboard box.



### Short Handle Bamboo Tote Bag – 100gsm

LL514

- Double short handle bamboo tote bag.
- Made from bamboo, one of the world's fastest-growing plants.
- Bamboo is renewable and biodegradable.



### Long Handle Bamboo Conference Bag – 100gsm

LL515

- Double long handle bamboo tote bag.
- Made from bamboo, one of the world's fastest-growing plants.
- Bamboo is renewable and biodegradable.



### Malibu Handy Pouch

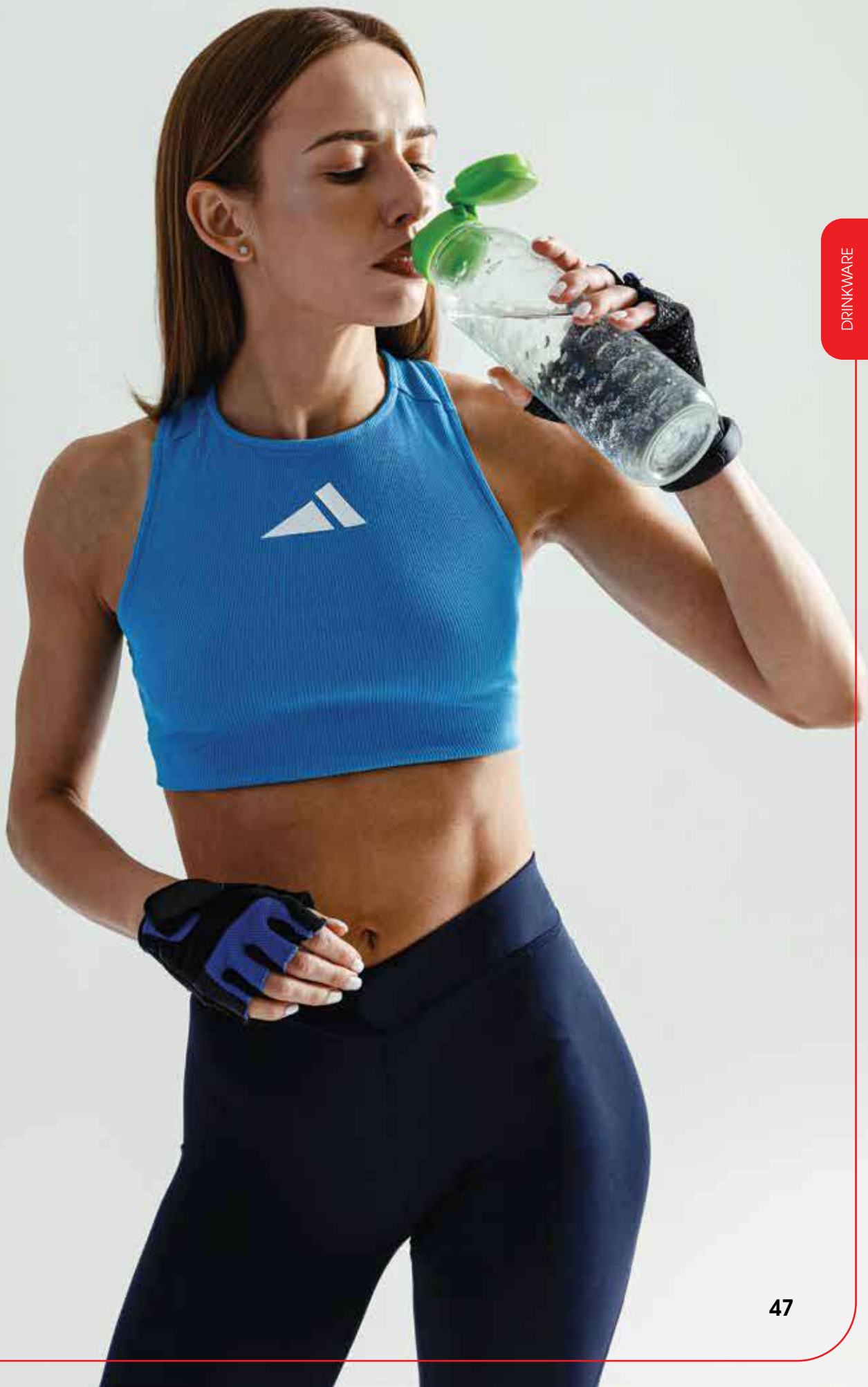
LL545

- Polyester utility pouch with zipper closure.
- Includes 1 mesh zip pocket on front, 1 solid zip pocket on front and handy wrist strap.





# Drinkware



DRINKWARE



**Bali Drink Bottle**  
LL6905

- 750ml drink bottle with leak free lid.
- Made from BPA free Tritan.
- Ergonomic, integrated carry handle.
- Shatter, odour and stain resistant.



**Barossa Vacuum Drink Bottle**  
LL6514

- 500ml drink bottle with leak proof lid.
- Vacuum insulated helps maintain the preferred temperature and eliminates condensation on the external finish.



**Capri Glass Bottle**  
LL1394

- 550ml borosilicate glass drink bottle with leak proof stainless steel lid.
- This glass bottle is intended for cold use only, not suitable for carbonated liquids or freezing.



**Capri Silicone Bottle**  
LL1397

- 550ml borosilicate glass drink bottle with leak proof lid.
- Protective silicone sleeve that can be used as a carry handle.



**Chat Recycled Aluminium Drink Bottle**  
LL6991

- 750ml drink bottle made from recycled aluminium.
- Leak free stainless steel screw cap lid with natural bamboo and folding carry handle.



**Gelato Aluminium Drink Bottle**  
LL6996

- 750ml aluminium drink bottle with a black screw in lid.
- Includes an aluminium carabiner that is attached to the lid with a split ring.





**Gelato Aluminium Drink Bottle with Bamboo Lid**  
LL6997

- 750ml aluminium drink bottle with a bamboo screw in lid.
- The bottle is equipped with a black carry strap.



**Hike Drink Bottle**  
LL1385

- 800ml lightweight stainless steel drink bottle with leak proof lid.
- Choice of 2 lid styles - flip up with straw lid or sipper lid.



**Mystique Stainless Steel Vacuum Bottle**  
LL6960

- 650ml powder-coated stainless steel drink bottle with screw-in lid and carry handle.
- Lid is secured to bottle when open can't be lost.



**Pisa Glass Tumbler**  
LL3431

- 480ml borosilicate glass tumbler with sealed bamboo lid and straw.
- Silicone sleeve on tumbler.



**Rio Drink Bottle**  
LL8740

- 600ml tritan drink bottle with push button carry handle in the lid.
- Lid with retaining clip will prevent accidental spills.



**Soda Aluminium Drink Bottle**  
LL6989

- 750ml aluminium single walled drink bottle.
- Stainless steel, leak free secure screw lid.
- Made from BPA free material.





**Soda Grande Vacuum Bottle**  
LL6140

- 750ml stainless steel double wall vacuum bottle.
- Leak free secure screw cap lid.
- Made from BPA free material.
- Shatter, odour and stain resistant.



**Soda Elegant Drink Bottle**  
LL6984

- 500ml double wall stainless steel vacuum bottle with soft feel rubberised coating.
- Leak free secure screw cap lid.
- Made from BPA free material.
- Shatter, odour and stain resistant.



**Soda Stainless Steel Drink Bottle**  
LL6974

- 700ml stainless steel single walled bottle.
- Leak free secure screw cap lid.
- Made from BPA free material.



**Soda Vacuum Drink Bottle**  
LL6976

- 500ml double wall stainless steel vacuum bottle.
- Leak free secure screw cap lid.
- Made from BPA free material.



**Soda Hanger Drink Bottle**  
LL6982

- 700ml stainless steel single walled bottle.
- Leak free screw cap lid with hanger.
- Made from BPA free material.



**Soda Hanger Vacuum Drink Bottle**  
LL6978

- 500ml double wall stainless steel vacuum bottle.
- Leak free screw cap lid with hanger.
- Made from BPA free material.





**Soda Drink Bottle**  
LL6971

- 700ml translucent drink bottle with stainless steel cap and base.
- Leak free secure screw cap lid.
- Made from BPA free material.



**Spritz Collapsible Water Bottle**  
LL6964

- 700ml collapsible water bottle with large handle.
- Includes an aluminium carabiner.



**Tahiti Water Bottle**  
LL1390

- 725ml tritan drink bottle with flip up sip lid and straw.
- Made from BPA free Tritan.
- Shatter, odour and stain resistant.



**Thirst Water Bottle**  
LL6968

- Transparent flat 500ml drink bottle.
- Neatly fits into your bag or briefcase.
- BPA free.



**Thor Protein Shaker / Storage Cup**  
LL8747

- 600ml protein shaker with screw off base.
- Suitable for storing protein powder, snacks or other dry products.
- Includes stainless steel shaker ball for mixing.



**Aroma Coffee Cup with Handle Lid**  
LLO423

- 350ml double walled hot/cold cup.
- Silicone sealed flip up handle lid.
- Tough foldable carry handle.
- BPA free.





**Aroma Coffee Cup with Comfort Lid**  
LLO422

- 350ml double walled hot/cold cup with secure fitting comfort lid.
- BPA free.
- Microwave safe.



**Aroma Eco Coffee Cup with Eco Lid**  
LLO426

- 350ml double walled hot/cold cup with secure fitting comfort lid.
- Cup & lid made from a 50% blend of wheat fibre and BPA free polypropylene.



**Aroma Eco Coffee Cup with Comfort Lid**  
LLO418

- 350ml double walled hot/cold cup with secure fitting comfort lid.
- Cup made from a 50% blend of wheat fibre and BPA free polypropylene.



**Aroma Eco Coffee Cup with Handle Lid**  
LLO419

- 350ml double walled hot/cold cup with secure fitting handle lid.
- Cup made from a 50% blend of wheat fibre and BPA free polypropylene.



**Avenue Wheat Fibre Cup & Spoon**  
LL6483

- 330ml reusable coffee cup with integrated spoon holder in the handle.
- Made from a 50% blend of wheat fibre.



**Aztec Coffee Cup**  
LLO877

- 300ml double wall stainless steel cup with black liner.
- Suitable for hot or cold drinks with splash proof sliding closure.





**Cascade Coffee Cup**  
LLO441

- 320ml curved double wall vacuum cup.
- Modern design.
- Keeps drinks hot or cold for about 3 hours.
- Push seal lid with sliding splash proof cover.



**Flair Stainless Steel Coffee Cup**  
LLO446

- 360ml double walled stainless steel vacuum cup.
- Screw lid with push button feature allows drinking from any position.
- Drinks remain hot/cold for up to 6 hours.



**Java Mug**  
LL862

- 300ml capacity stainless steel double wall barrel mug.
- Double wall keeps liquid insulated to stay hotter/cooler for longer.



**Kick Eco Coffee Cup**  
LLO453

- 320ml reusable coffee cup.
- Made from 50% blend of wheat fibre and BPA free polypropylene.
- Includes heat resistant silicone sleeve.



**Kick Crystal Coffee Cup**  
LLO443

- 320ml clear reusable coffee cup.
- Includes heat resistant silicone sleeve and screw on lid.
- Choose lid and silicone sleeve colours.



**Kick Coffee Cup**  
LLO439

- 320ml reusable coffee cup.
- Includes heat resistant silicone sleeve and screw on lid.
- Choose lid and silicone sleeve colours.





**Magnum Ceramic Mug**  
LL0850

- 350ml ceramic coffee mug with matte finish and insulated cork base.
- Built-in cork base prevents scratching and staining on table tops and desks.



**Milano Vacuum Coffee Cup**  
LL0863

- 350ml double wall stainless steel cup with handle lid and flip piece.
- Suitable for hot or cold drinks with secure fitting comfort lid.



**Manta Vacuum Cup**  
LL0853

- 400ml double walled stainless steel vacuum cup.
- Unique push button open/close feature in the lid.



**Ninja Coffee Cup**  
LL0440

- 350ml double walled stainless steel vacuum cup.
- Secure screw lid & flip up tab with silicone seal.



**Sierra Double Wall Glass Cup**  
LL0402

- 450ml double walled borosilicate glass coffee cups.
- The insulated glass will keep hot beverages hotter and cold beverages colder for longer without any messy condensation rings left on the table.



**Sierra Double Wall Glass Cup**  
LL0400

- 350ml double walled borosilicate glass coffee cups.
- The insulated glass will keep hot beverages hotter and cold beverages colder for longer without any messy condensation rings left on the table.







**Taurus Coffee Cup**  
LLO976

- 400ml stainless steel cup with black liner.
- Suitable for hot or cold drinks.
- Secure screw-on lid with flip-up drinking piece.



**Vienna Coffee Cup with Silicone Lid**  
LLO427

- 320ml glass reusable coffee cup.
- With silicone sleeve and lid.
- Made from borosilicate glass known for its durability and thermal shock resistance.



**Vienna Coffee Cup with Cork Band**  
LLO415

- 320ml glass reusable coffee cup.
- Heat-resistant cork band and secure lid.
- Made from borosilicate glass.



**Vienna Coffee Cup with Flip Lid**  
LLO432

- 320ml glass reusable coffee cup.
- With silicone sleeve and secure flip lid.
- Made from borosilicate glass.



**Vienna Eco Coffee Cup**  
LLO413

- 320ml glass reusable coffee cup.
- With silicone sleeve and eco comfort lid.
- Lid made from a 50% blend of wheat fibre and polypropylene.



**Vienna Eco Coffee Cup With Cork Band**  
LLO414

- 320ml glass reusable coffee cup with cork sleeve and eco lid.





**Vienna Coffee Cup with Snap Lid**  
LLO437

- 320ml glass reusable coffee cup.
- Secure fitting lid with snap piece and silicone sleeve.
- Made from borosilicate glass.



**Vienna Eco Coffee Cup with RPET Band**  
LLO448

- 320ml glass reusable coffee cup.
- RPET band and eco comfort lid.
- Lid made from 50% wheat fibre.
- Made from borosilicate glass.



**Vienna Coffee Cup with RPET Band and Flip Lid**  
LLO449

- 320ml glass reusable coffee cup.
- With RPET Band and secure fitting flip lid.
- Made from borosilicate glass.



**Vienna Coffee Cup with RPET Band and Silicone Lid**  
LLO450

- 320ml glass reusable coffee cup.
- RPET band and silicone lid.
- Made from borosilicate glass.



**Vienna Coffee Cup with RPET Band and Snap Lid**  
LLO451

- 320ml glass reusable coffee cup.
- RPET band and snap lid.
- Made from borosilicate glass.



**Vienna Coffee Cup with Snap Lid and Cork Band**  
LLO461

- 320ml glass reusable coffee cup.
- Cork band and snap lid.
- Made from borosilicate glass.





**Vulcan Wheat Fibre Mug**  
LL0463

- 300ml reusable coffee cup.
- Made from a 50/50 blend of wheat fibre and BPA free polypropylene.



**Villa Cork Square Coaster**  
LL3484

- Natural square cork coaster.
- 100% organic material composed of the bark of the cork oak tree.



**Villa Cork Round Coaster**  
LL3483

- Natural round cork coaster.
- 100% organic material composed of the bark of the cork oak tree.



**Villa Cork Round Coaster Set of 4**  
LL3486

- Round cork coasters in cardboard box.
- Absorbs spills and condensation as well as being heat resistant.
- 100% organic material.



**Villa Cork Square Coaster Set of 4**  
LL3487

- Square cork coasters in cardboard box.
- Absorbs spills and condensation as well as being heat resistant.
- 100% organic material.



**Quench Bottle Opener/Coaster**  
LL9360

- Bottle opener and coaster with EVA foam backing.
- Nickel plated steel bottle opener.
- Great full cover print area.





**Skol Bottle Opener**

LL201

- Premium quality die cast metal opener / keytag.
- Opens ring pull pop top cans and crown seals.



**Cheers Bottle Opener**

LL205

- Aluminium bottle opener / keytag.
- Opens ring pull pop top cans and crown seals.



**Nitro Bottle Opener**

LL2659

- Plastic bottle opener / keytag.
- Opens ring pull pop top cans and crown seals.
- 25mm diameter split ring.



**Cyborg Bottle Opener**

LL6710

- Heavy duty bottle opener with bamboo handle.
- Opens crown seal tops.



**Arctic Bottle Opener**

LL3790

- Bottle opener with magnet for storage.
- Made from a 50/50 blend of wheat fibre and BPA free polypropylene.
- Handy slot for opening ring pull cans.



**Lager Bottle Opener Phone Stand**

LL6918

- Combination phone stand and bottle opener that attaches to your phone.
- Made from durable aluminium and bamboo.





**Discus Bottle Opener / Coaster**  
LL4998

- Round bamboo bottle opener.
- Attaches to metal surfaces with two magnets on the back.
- It's comfortable round shape makes it easy to grip and open bottles with ease.



**Chillax Bottle Opener**  
LL3792

- Sturdy ABS plastic bottle opener with nickel plated steel opener.
- Magnet on back to attach to a fridge.



**Arvo Bottle Opener**  
LL3519

- Aluminium bottle opener with 30mm split ring keytag.
- Opens crown seal tops.
- Ring attached with a polyester lanyard.



**Stainless Steel Hip Flask**  
LL2347

- 150ml Stainless steel hip flask with brushed finish.
- Hinged screw-on cap ensures that the contents of the flask stay securely inside, preventing leaks and spills.



**Tropic Bamboo Coaster Set**  
LL3516

- Set of 6 natural bamboo coasters in holder.
- Ideal to serve your drinks.
- Offers protection to furniture in your home and workplace.



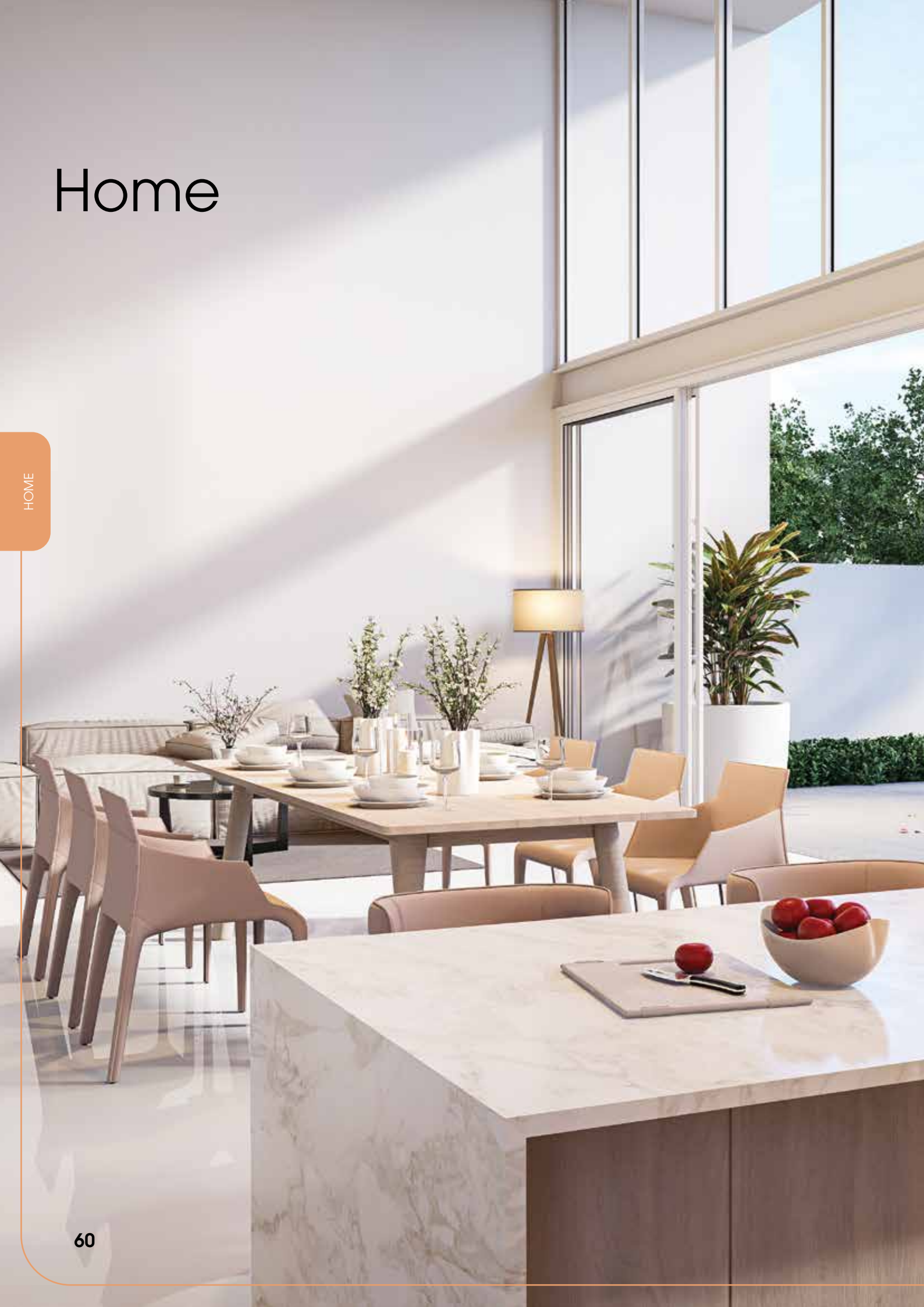
**Cosy Stainless Steel Drink Cooler**  
LL0980

- Double wall stainless steel drink cooler. Suitable for 375ml cans and most bottles
- Removable screw top allows you to securely hold your can or bottle.
- Keeps drinks cooler for longer than a traditional stubby holder.



# Home

HOME





### Stax Eco Lunch Box

LL6366

- 2 tier, wheat fibre lunch box.
- Bamboo knife, fork and spoon retained in the top compartment.



### Stax Eco Lunch Box with Phone Holder Lid

LL6362

- Convenient phone holder in lid.
- 2 tier, wheat fibre lunch box.
- Bamboo knife, fork and spoon retained in the top compartment.



### Bermuda Lunch Box

LL6369

- Stainless steel lunch box with a natural bamboo lid.
- Includes 3 piece natural bamboo cutlery set with elastic strap.



### Zest Lunch Box

LL6185

- 3 piece food/storage container.
- With locking lid.
- Steam release lid vent.
- Separate internal tray.



### Fjord Eco Ice Scraper

LL2809

- Sturdy ice scraper with serrated edge for removing ice and snow from car windcreens or the inside of freezers.
- Perfect for frosty winter mornings.



### Guru Wheat Fibre Combo Spoon

LL8803

- Wheat fibre combo utensil of knife, fork and spoon.
- Features spoon at one end and a serrated knife-edge at the other.





### Rush Car Air Vent Phone Holder LL9264

- Spring loaded car vent mobile phone holder.
- Attaches to air vent in your car to securely hold and mount your smart phone.
- Perfect for taking calls.



### Miso Bamboo Cutlery Set LL8794

- 3 piece bamboo cutlery set in calico drawstring pouch.
- Includes full size knife, fork and spoon.



### Delish Eco Cutlery Set in Calico Pouch LL8790

- 3 piece cutlery set in calico drawstring pouch.
- Includes full size fork, knife and spoon.
- Cutlery set made from a 50/50 blend of wheat fibre and BPA free polypropylene.



### Delish Eco Cutlery Set LL8787

- 3 piece cutlery set with push on lid.
- Includes full size fork, knife and spoon.
- Made from a 50/50 blend of wheat fibre and BPA free polypropylene.



### Savour Cutlery Set LL8808

- 3 piece, stainless steel cutlery set with bamboo handles in drawstring calico pouch.
- Includes knife, fork, spoon.



### Banquet Cutlery Set LL8798

- 3 piece stainless steel cutlery set.
- Includes full size knife, fork and spoon packed in calico drawstring pouch.
- Eco friendly alternative to plastic cutlery.







### Evergreen Straw Set

LL2014

- Set of 2 straws with cleaning brush in cardboard biodegradable tube.
- Straws are made from stainless steel.
- Can be used for hot or cold drinks.



### Fizz Straw Set

LL8781

- Set of stainless steel drinking straws.
- 1 x straight, 1 x bent straw.
- Straw cleaning brush.



### Mojito Straw Set

LL8782

- Set of stainless steel drinking straws.
- 1 x straight, 1 x bent straw.
- Straw cleaning brush.



### Hercules Kitchen Scales

LL6370

- Digital kitchen scales with bamboo.
- 5kg capacity.
- Digital display with non slip rubber feet.
- Powered by 2 x AAA batteries included.



### Sippy Telescopic Straw

LL8779

- Stainless steel.
- Telescopic.
- Straw cleaning brush included.



### Bionic Multi Tool In Pouch

LL3611

- An entire toolbox in your pocket.
- This credit-card sized multi-tool has 15 tools.





**Condo Keytag**  
LL102

- Rectangular flexible PVC keytag with silver metal split ring.



**Villa Keytag**  
LN102

- Rectangular flexible PVC keytag with silver metal split ring.



**Riviera Keytag**  
LN0020

- Flexible moulded PVC custom shape keytag up to 4 colours.
- More than 4 colours at extra cost.



**House Bamboo Zinc Keytag**  
LL3522

- House shaped keytag with 32mm split ring.
- Made from nickel plated cast zinc with a natural bamboo insert.



**Circle Bamboo Zinc Keytag**  
LL3524

- Circle shaped keytag with 32mm split ring.
- Made from nickel plated cast zinc with a natural bamboo insert.



**Rectangle Bamboo Zinc Keytag**  
LL3526

- Rectangle shaped keytag with 32mm split ring.
- Made from nickel plated cast zinc with a natural bamboo insert.





**Laser Torch**  
LL11009

- Aluminium torch.
- 9 white LED globes.
- Black hand loop.
- 3 AAA batteries included.



**Orion Torch**  
LL4808

- 3 LED aluminium torch.
- LED flashlight and keyring.
- Push button operation.
- AAA battery included.



**Signal Torch**  
LL4383

- Super bright COB torch.
- Soft feel coating.
- Handy carry strap.
- Silicone on/off button.



**Blaze Torch**  
LL4324

- Powerful push button LED (COB) handy torch with magnet for attaching to metal surfaces.



**Car Deodorisers**  
LN5925

- Your message will hang around with this billboard in a car.



**Supa Cham Chamois in Tube**  
LL404

- Synthetic pre wet chamois with rounded corners packed in 2 piece white PVC tube.





**Summer Sun Shade**  
LL410

- Folding polyester sun shade for car windscreen.
- Elastic retainer strap.



**Solar Sun Shade**  
LN410

- Folding polyester sun shade for car windscreen.
- Elastic retainer strap.



**Trinity Recycled Cotton Apron**  
LL7045

- 170gsm recycled cotton.
- Adjustable neck strap.
- Secured with two long waist straps.
- Handy front pocket.



**Concertina Metallic Car Sun Shade**  
LN9105

- Bubble foil concertina car sun shade.
- With 2 black elastic loops.
- Available in silver with black contrast trim.





**Tornado Tape Measure**

LL496

- 1.5m polyester tape measure with push button retract action.
- Tape - Metric calibrations on one side and imperial calibrations other side.



**Tornado Wheat Fibre Tape Measure**

LL5033

- 1.5m retracting tape measure with push button retract action.
- Made from a 50% blend of wheat fibre.
- Tape - metric and imperial calibrations.



**Water Saving Shower Timer**

LL1002

- 4 minute rotating sand timer.
- Suction cup for attaching to glass shower screens.



**Surf Stubby Cooler**

LL2295

- 3mm Neoprene stubby and can cooler.
- Supplied flat for easy distribution and storage.



**Cosy Stainless Steel Drink Cooler**

LL0980

- Double wall stainless steel drink cooler. Suitable for 375ml cans and most bottles
- Removable screw top allows you to securely hold your can or bottle.
- Keeps drinks cooler for longer than a traditional stubby holder.





### Exocet 5m Retracting Tape Measure

LL1408

- 5m Retracting tape measure with locking tab and push button brake.
- Stainless steel belt clip and wrist strap for easy access while on the job.



### Contractor Tape Measure

LL1402

- 4 in 1, 2 metre /6 foot tape measure.
- Also includes silver belt clip, yellow pen, yellow note pad.



### Cargo Storage Organiser

LL7002

- 2 large compartments perfect for organising clutter in the car or for transporting groceries.



### Supa Cham Chamois in Pouch

LL405

- Synthetic pre wet chamois with rounded corners, cello bagged in clear PVC pouch.
- Chamois supplied with "Supa Cham" debossed logo as standard.



# Technology

TECHNOLOGY

**1 YEAR  
WARRANTY**

All our technology products carry a one year limited warranty and Power Banks are compliant with Australian / New Zealand standards. Copies of compliance certificates available on request.



**Endurance Pedometer**  
LN9933

- Pedometer wristband gives the motivation to get active.
- Rechargeable 50mAh LiPo battery.



**Stride Pedometer Bracelet**  
LN9929

- Pedometer bracelet gives the motivation to get active.
- Rechargeable 50mAh LiPo battery.



**Rampage Sports Watch**  
LN9950

- Aluminium sports watch with silicone band.
- Light weight, only 46g with 1.4 inch colour touch screen.



**Stellar Sports Watch**  
LN9952

- Aluminium sports watch with silicone band and touch screen.
- Water resistant (IP67) to a depth of 1m for up to 30 minutes.



**Mustang Sports Watch**  
LN9951

- Aluminium sports watch with silicone band.
- Light weight 38g with 1.85" colour touch screen.
- Water resistant (IP68) to a depth of 1.5m for up to 30 minutes.



**Sirocco Fan**  
LL4409

- Two speed battery operated fan.
- Includes two positions support stand.







**Fresco Speaker & Wireless Charger**  
LL9465

- Bluetooth speaker with bamboo veneer body and wireless charger.
- The charger is 15W so fast charge capable with using a fast charge cable and connected to a 9V/2A power source.



**Gig Bamboo Bluetooth Speaker**  
LL9462

- 3W square, bamboo bluetooth / cable connect speaker with metal mesh grill.
- Soft EVA rubber base covers a wheat fibre base with colour changing LED light feature.



**Typhoon Speaker & Wireless Charger**  
LL9467

- Round bluetooth speaker made from recycled ABS with veneer body and wireless charger.



**Freedom Bamboo Bluetooth Speaker**  
LL9460

- 3W bamboo bluetooth / cable connect speaker with metal grill.
- Clear sound, A2DP bluetooth.
- FM radio and hands free function.



**Tango Speaker**  
LL9452

- 92mm Hi-Fi aluminium bluetooth / cable connect speaker and hands free function.
- A2DP bluetooth.
- Connect to your phone or tablet.



**Jive Speaker**  
LL9446

- 3W bluetooth speaker.
- Syncs to your phone or other device.
- FM radio function, micro SD card slot and USB slot.





### Havoc Speaker

LL9456

- IPX4 rated water resistant bluetooth speaker.
- Rugged, rubber coating.



### Shogun Speaker

LL9458

- Carbon fibre look bluetooth speaker.
- Combination dual bluetooth speaker and charger.



### Neon Bluetooth Speaker

LL9469

- IPX6 rated water resistant bluetooth speaker.
- Each end has LED illumination rings that pulse to the music beat.
- A2DP Bluetooth.



### Tempest TWS Earbuds

LL6158

- TWS earbuds in flip top charging case.
- High definition clear sound.
- Built-in microphone.



### Equinox ANC Headphones In Case

LL9244

- Active noise cancelling headphones.
- Bluetooth over ear headphones, adjustable, foldable head band and ear pieces.
- Hands free function built in microphone.
- Listen to music wirelessly for up to 10m.
- Supplied in zippered EVA case.



### Hyper Bluetooth Headphones

LL9242

- Bluetooth over ear headphones.
- Hands free function built in microphone.
- Listen to music wirelessly up to 10m.
- Supplied in zippered EVA case.





**Arc Square Wireless Charger**

LLO210

- Square inductive, wireless charge pad.
- Instructions included.
- Includes inductive charging indicator.
- 12 month limited technology warranty.



**Arc Round Wireless Charger**

LLO208

- Round inductive, wireless charge pad.
- Instructions included.
- Includes inductive charging indicator.
- 12 month limited technology warranty.



**Arc Eco Square Wireless Charger**

LLO226

- Square inductive, wireless charge pad.
- Made from 50% wheat fibre.
- Instructions included.
- Includes inductive charging indicator.
- 12 month limited technology warranty.



**Arc Eco Round Wireless Charger**

LLO222

- Round inductive, wireless charge pad.
- Made from 50% wheat fibre.
- Instructions included.
- Includes inductive charging indicator.
- 12 month limited technology warranty.



**Arc Square Bamboo Wireless Charger**

LLO224

- Square inductive, wireless charge pad.
- Made from bamboo.
- Instructions included.
- Includes inductive charging indicator.
- 12 month limited technology warranty.



**Arc Round Bamboo Wireless Charger**

LLO220

- Round inductive, wireless charge pad.
- Made from bamboo.
- Instructions included.
- Includes inductive charging indicator.
- 12 month limited technology warranty.





**Proton Wireless Charger**  
LLO215

- Wireless charger, with built in stand.
- Features blue LED charge indicator.
- Instructions included.



**Proton Eco Wireless Charger**  
LLO221

- Wireless charger, with built in stand.
- Made from 50% wheat fibre.
- Features blue LED charge indicator.
- Instructions included.



**Target Wireless Charger**  
LLO225

- 5W wireless charger with upright stand that adjusts to suit phones in a landscape or portrait position.
- Instructions included.



**Aluminium Ranger**  
Fast Wireless Charger  
LLO275

- Capable of fast charge when connected to a power source of 9V/2A.
- Supplied with 1m USB A to Type C cable.
- Instructions included.



**Bamboo Ranger**  
Fast Wireless Charger  
LLO271

- Capable of fast charge when connected to a power source of 9V/2A.
- Supplied with 1m USB A to Type C cable.
- Instructions included.



**Cork Ranger**  
Fast Wireless Charger  
LLO272

- Capable of fast charge when connected to a power source of 9V/2A.
- Supplied with 1m USB A to Type C cable.
- Instructions included.





**Wood Ranger  
Fast Wireless Charger**  
LLO273

- Capable of fast charge when connected to a power source of 9V/2A.
- Supplied with 1m USB A to Type C cable.
- Instructions included.



**Solstice Eco Wireless Charger**  
LLO282

- Inductive, wireless charge pad.
- Made from 50% wheat fibre.
- Includes inductive charging indicator.



**Spectre Eco Wireless Charger Hub**  
LLO280

- 5W wireless charger/hub with two USB A ports.
- Made from 50% wheat fibre.
- Includes inductive charging indicator.



**Dune Fast Wireless Charger**  
LLO230

- Twin coil upright phone stand with wireless charging.
- Use in either landscape or portrait position.
- Capable of fast charge when connected to 9V/2A.



**Crystal Wireless Charger**  
LLO276

- Inductive, wireless charge pad suitable for wireless charging/QI compatible phones.
- LED light illuminates when charging.
- Transparent with internal components visible.
- 12 month limited technology warranty.



**Talon Magnetic Fast Charger**  
LLO240

- Wireless magnetic charger suitable for iPhone 12 and above.
- 1m USB to Type C cable included.
- 12 month limited technology warranty.





4GB

**Hover Wireless Charger/Mouse Pad**  
LL0217

- Mouse mat with built in wireless charging.
- Instructions included.
- 12 month limited warranty.
- Packed in white gift box.



**Custom Wireless Charger**  
LN0520

- Custom shape inductive, wireless charger.
- Up to PVC 6 colours per design.
- Inductive charging indicator.
- Micro USB cable included.



**Bamboo USB Flash Drive 4GB**  
LL9602

- 4GB bamboo swivel flash drive.
- A grade memory. USB 2.0 chips.
- Data transfer speed is up to 480 Mbps.
- Will record and play HD & Full HD video.



4GB



8GB



**Swivel USB Flash Drive 4Gb**  
LL9600

- 4GB swivel flash drive.
- A grade memory. USB 2.0 chips.
- Mix stock colours in the one order.
- Flash drive can be packed in cello bag.



**Swivel Flash Drive Dual 8Gb**  
LL9607

- 8GB swivel USB flash drive with USB A & Type C connector.
- USB 2.0 chips.
- Transfer speed 480 Mbps.
- 12 month limited warranty.



**Credit Card Flash Drive**  
LL9605

- Credit card style 4GB flash drive.
- A grade memory. USB 2.0 chips.
- 12 month limited warranty.





**Forte Earbud Set**  
LL6150

- Earbud set in round EVA zippered case.
- Fits most phones and media players. 1.2m lead with 3.5mm audio jack.



**Thump Earbud Set**  
LL0100

- Earbud set in round pocket sized plastic carry case.
- Fits most phones and media players.
- 1.2m lead with 3.5mm audio jack.
- Case and earbud housing are matching colours.



**Velocity Power Bank**  
LL9109

- 2000 mAh aluminium portable charger.
- Recharges most devices 30%-80%.
- Can be charged up to 300 times.
- Includes USB to Micro USB cable.



**Impulse Power Bank**  
LL9111

- 2200 mAh portable charger.
- Recharges most devices 30%-80%.
- Includes USB to Micro USB cable for charging power bank.



**Matrix Power Bank**  
LL9204

- 4000 mAh portable charger.
- A-grade Li-Po battery that can recharge from a USB port.
- Recharges most devices on the market between 80%-100%.



**Dynamo Wireless Power Bank**  
LL9205

- 4,000mAh inductive wireless charger power bank.
- Includes USB to Micro USB cable.
- 4 graduated power remaining LED indicators.
- Recharges most devices 80%-100%.





### Viper Bamboo Power Bank LL0596

- 5000mAh Powerbank.
- Made from natural bamboo.
- 4 graduated LED indicators shows the charge level.



### Nova Power Bank LL0519

- 5000 mAh portable charger.
- A Grade Li-Po battery.
- Includes integrated micro USB cable, separate integrated 8 pin cable & Type C adaptor stored in the case.



### Arya Power Bank LL9215

- Slim design 5,000mAh power bank with built in Type C and combo Android/iOS connector cables for charging power bank and any phone/device that has a micro USB input.



### Sabre Wireless Power Bank LL9209

- 5,000 mAh wireless charger.



### Octavius Power Bank LL9213

- 5,000mAh wireless charger power bank.
- Built in Type C and Android/iOS connector cables.
- 4 LED charge indicators.



### Boost Wireless Power Bank / Charging Station LL0219

- 10 000mAh detachable wireless power bank/dock.
- A grade Li-Polymer battery.
- Incorporates inductive charging and cable charge.







**Sabre Eco Wireless Power Bank**  
LL9211

- 10,000mAh wireless charger power bank.
- Built in Type C and Android/iOS cables.
- Made from 50% wheat fibre.
- 4 LED charge indicators.



**Cosmos Phone Wallet**  
LL9113

- Silicone credit card size holder.
- Attaches to the back of phones.
- Uses 3M adhesive.
- Ideal to hold licence, tickets, keys or bank notes.



**Apollo Bamboo Phone Stand**  
LL9079

- Compact phone stand made from bamboo with charging docking station.
- Supplied flat, with easy DIY assembly it can vertically or horizontally hold any phone.



**Cradle Phone Holder**  
LL9083

- C shape base mobile phone holder.
- Keeps your mobile, tablet in an upright easily viewable position.



**Pop Phone Stand**  
LL9098

- Stand up your phone in style with our pop it mobile phone holder.
- Stress relieving pop button feature.
- Features a loop for connecting to a keyring.



**Rascal Bamboo Tablet & Phone Stand**  
LL9736

- Lightweight, phone stand made from bamboo.
- Will display a smart phone or tablet horizontally or vertically.





### Smart Phone Holder LL9084

- White folding phone holder with coloured silicone grip pad.
- Keeps your mobile in an upright easily viewable position.



### Vectra Phone Stand LL9061

- Adjustable, sturdy phone stand suitable for use with all phones.
- Magsafe technology you can place your iPhone 12 + 13 on the charging stand for a secure connection.



### Halo Phone Grip & Stand LL9268

- 360 degree rotation phone stand and holder where your finger can slide through to hold onto your phone.
- 3M tape on back.



### Phone Grip LL3436

- Cool expanding phone grip.
- Attaches to your phone or case.
- Expands up when you need a grip.
- Collapses flat.



### Star Selfie Light LL9120

- Clip on ultra white LED phone light.
- 3 brightness settings plus on/off.
- The light has a rechargeable lithium battery.



### Volt Combo Cable LL9370

- 6 in 1 combo ribbon cable.
- 1m braided cable with aluminium housing.
- Offers fast charging with data support.
- End 1 - 8 pin 1st side, micro USB 2nd side, USB Type C.





**Glimmer Round Glow Cable**  
LL9430

- 3 in 1 cable with illuminating white LED top.
- 8 pin, Type C and micro USB cables.
- Braided cables and silver connectors.
- Chrome keyring.



**Glimmer Square Glow Cable**  
LL9431

- 3 in 1 cable with illuminating white LED top.
- 8 pin, Type C and micro USB cables.
- Braided cables and silver connectors.
- Chrome keyring.



**Kinetic Round Glow Cable**  
LL9434

- 4 in 1 cable with illuminating white LED top.
- 8 pin, Type C and micro USB cables.
- Braided cables and silver connectors.
- Chrome keyring.



**Kinetic Square Glow Cable**  
LL9435

- 4 in 1 cable with illuminating white LED top.
- 8 pin, Type C and micro USB cables.
- Braided cables and silver connectors.
- Chrome keyring.



**Oracle Round Bamboo Charging Cable**  
LL9436

- 4 in 1 cable with natural bamboo cable housing and wheat straw cables/connectors.
- Includes USB A, Type C, Micro USB & iOS connectors.



**Oracle Square Bamboo Charging Cable**  
LL9437

- 4 in 1 cable with natural bamboo cable housing and wheat straw cables/connectors.
- Includes USB A, Type C, Micro USB & iOS connectors.





**Lumen Lanyard Cable**  
LN9364

- Lanyard power cable with 3 in 1 connector.
- Power iOS/Android & Type C connectors.
- Comes with swivel snap hook & fixed snap hook connectors.
- Max output 5V 2A.



**Custom Topper PVC Cable**  
LN9065

- Custom topper with 3 in 1 USB cable.
- Topper can have 4 colours plus the base colour.
- USB A, Micro USB, Type C & IOS.
- Max Output 5V 2A.



**Cube Topper PVC Cable**  
LN9070

- Cube PVC topper with 3 in 1 USB connector.
- Topper can have 4 layered colours in design plus the base colour on 5 sides.
- USB A, Micro USB, Type C & IOS.
- Max Output 5V 2A.



**Cuba Glow Cable**  
LN9080

- 3 in 1, 1m braided cable.
- Logo panel lights up white.
- Includes USB A, Micro USB, Type C & iOS connectors.



**Family Light Up 3 in 1 Cable**  
LL9404

- 3 in 1 USB connector cable with micro USB, 8 pin & Type C data transfer and charging.
- Choice of illuminating coloured rings.
- Unit lights up when plugged in.



**Fury Cable**  
LL9353

- Retractable USB cable with micro USB, Type C and 8 pin connector cable.
- Will transfer data and charge devices.
- Extends to 1m and carry 2.1 Amps.





**Shield Data Blocker**  
LL9355

- Keep your data safe with this USB data blocking device.
- Data blocker allows charging while blocking the data pins.



**Monza Car Charger**  
LL0007

- The handy solution to charging your mobile phone, tablet or other devices in the car.
- Dual USB outlet.
- Plug into your cigarette lighter socket.



**Digital Luggage Scales**  
LL4834

- Weigh your bags before you leave with this digital luggage scale.
- Switch between grams, kilos, pounds or ounces.
- Maximum Capacity 50kg.
- Powered by 2 AAA Batteries.



**Microfibre Lens Cloth with Screen Cleaner**  
LL603

- Zig Zag microfibre lens cloth and 15ml citrus scented spray pump hand sanitiser suitable to be used as a screen cleaner in clear PVC zippered pouch.



**Screen Cleaning Kit**  
LN605

- 215gsm custom microfibre lens cloth and 30ml cleaning solution in PVC push button pouch.



**Whoosh Spray Screen Cleaner**  
LL6495

- 15ml pump action screen clearing spray dispenser with a microfibre cloth panel.
- Great for cleaning and wiping the screens on electronic devices.





**Zig Zag Economy  
Microfibre Lens Cloth**  
LN1410

- Economy 230gsm/95denier microfibre lens cloth with zig zag edging.
- Full colour custom design 1 side. 2nd side design available at extra cost.



**Superior Microfibre Lens Cloth**  
LN608

- Superior 250gsm/120 denier microfibre lens cloth with straight or zig zag cut edges.
- Suitable for sunglasses, eyeglasses, smart phones, e-book readers, camera lens, monitors, collectables and tablets.



**Recycled PET Microfibre Lens Cloth**  
LN629

- 250gsm/120 denier microfibre lens cloth made from recycled PET with straight or zig zag cut edges.
- Suitable for sunglasses, eyeglasses, smart phones, e-book readers, camera lens.



**Zig Zag Economy Microfibre Lens  
Cloth**  
LL1410

- Economy 230gsm/95denier microfibre lens cloth with zig zag edging.
- Full colour custom design 1 side.
- Excellent for oil and moisture absorption.



**Microfibre Lens Cloth in Card**  
LN612

- Superior 215gsm high quality custom design microfibre lens cloth.
- Packed inside custom design 2 sided marketing card.





**Microfibre Bean Bag Phone Chair /  
Cleaner**  
LN1425

- 230gsm/95denier microfibre bean filled desk top phone holder with terry microfibre screen cleaner base.
- Suitable for cleaning sensitive surfaces and lenses.



**White Microfibre Lens Cloth in  
Clear Pouch**  
LL601

- White 210gsm/120denier microfibre lens cloth in clear PVC pouch.
- Excellent for oil and perspiration absorption.
- Suitable for sunglasses, eyeglasses.



**Microfibre Stick Clean Square**  
LN6065

- Microfibre 30mm x 30mm micro screen cleaner with printed backing card.
- Attaches to back of phones and mobile devices and is reusable.



**Microfibre Stick Clean Round**  
LN6066

- Microfibre 35mm Dia. micro screen cleaner with printed backing card.
- Attaches to back of phones and mobile devices and is reusable.





**Microfibre Stick Clean**  
LN6067

- Microfibre 40mm x 30mm micro screen cleaner with printed backing card.
- Attaches to back of phones and mobile devices and is reusable.



**Microfibre Stick Clean**  
LN6068

- Microfibre 40mm x 60mm micro screen cleaner with printed backing card.
- Attaches to back of phones and mobile devices and is reusable.



**Microfibre Webcam Blocker**  
LN6229

- Microfibre 35mmL x 18mmH webcam blocker with printed backing card.
- Attaches to web cam lens on laptops, tablets, phones and smart TV's.



**Mirage Sunglass Case & Lens Cloth**  
LN0709

- Microfibre covered metal sunglass case with matching 250gsm/120denier superior Microfibre lens cloth.
- Full colour custom design on case, and lens cloth (1 side).





# Gift Sets



A great set of colour matched products for any corporate environment.



**Alliance Gift Set**

LL8214

- Miami pen and 4GB swivel flash drive.
- Packed in 2 piece cardboard gift box with laser cut foam insert.



**Alliance Cardboard Gift Set**

LL8437

- Miami pen and 4GB swivel flash drive.
- Packed in 2 piece cardboard gift box with precision cut cardboard insert.
- Packaging proudly Australian made.



**Bellman Gift Set**

LL8215

- Napier pen and 4GB swivel flash drive.
- Packed in 2 piece cardboard gift box with laser cut cardboard insert.



**Bellman Cardboard Gift Set**

LL8421

- Napier pen and 4GB swivel flash drive.
- Packed in 2 piece cardboard gift box with precision cut cardboard insert.
- Packaging proudly Australian made.





**Cape Gift Set**  
LL8216

- Napier pen - Black edition and 4GB swivel flash drive.
- Packed in 2 piece cardboard gift box with laser cut foam insert.



**Cape Cardboard Gift Set**  
LL8436

- Napier pen - Black edition and 4GB swivel flash drive.
- Packed in 2 piece cardboard gift box with precision cut cardboard insert.
- Packaging proudly Australian made.



**Charter Gift Set**  
LL8217

- Orlando pen and 4GB swivel flash drive.
- Packed in 2 piece cardboard gift box with laser cut foam insert.



**Charter Cardboard Gift Set**  
LL8438

- Orlando pen and 4GB swivel flash drive.
- Packed in 2 piece cardboard gift box with precision cut cardboard insert.
- Packaging proudly Australian made.





**Cove Gift Set**  
LL8221

- Napier pen and 8GB swivel flash drive.
- Packed in 2 piece cardboard gift box with laser cut foam insert.



**Cove Cardboard Gift Set**  
LL8440

- Napier pen and 8GB swivel flash drive.
- Packed in 2 piece cardboard gift box with precision cut cardboard insert.
- Packaging proudly Australian made.



**Fast Charge Gift Set**  
LL8246

- Volt 6 in1 fast charge cable.
- Includes micro USB Type C, 8 pin, and USB.
- Packed in 2 piece cardboard gift box with laser cut foam insert.



**Fast Charge Cardboard Gift Set**  
LL8452

- Volt 6 in1 fast charge cable.
- Includes micro USB Type C, 8 pin, and USB.
- Packed in 2 piece cardboard gift box with precision cut cardboard insert.
- Packaging proudly Australian made.





**Infinity Gift Set**  
LL8213

- Velocity power bank and 4GB swivel flash drive.
- Packed in 2 piece cardboard gift box.
- With laser cut foam insert.



**Infinity Cardboard Gift Set**  
LL8435

- Velocity power bank and 4GB swivel flash drive.
- Packed in 2 piece cardboard gift box with precision cut cardboard insert.
- Packaging proudly Australian made.



**Kyoto Bamboo Gift Set**  
LL8220

- Napier bamboo pen and 4GB swivel bamboo flash drive.
- Packed in 2 piece cardboard gift box with laser cut foam insert.



**Kyoto Cardboard Bamboo Gift Set**  
LL8439

- Napier bamboo pen and 4GB swivel bamboo flash drive.
- Packed in 2 piece cardboard gift box with precision cut cardboard insert.
- Packaging proudly Australian made.





### Symphony Gift Set

LL8211

- Bling pen and 4GB swivel flash drive.
- Packed in 2 piece cardboard gift box with laser cut foam insert.



### Symphony Cardboard Gift Set

LL8434

- Bling pen and 4GB swivel flash drive.
- Packed in 2 piece cardboard gift box with precision cut cardboard insert.
- Packaging proudly Australian made.



### Carnival Gift Set

LL8261

- Bling pen, Velocity 2000mAh power bank, 4GB swivel flash drive.
- Packed in 2 piece cardboard gift box with laser cut foam insert.



### Carnival Cardboard Gift Set

LL844

- Bling pen, Velocity 2000mAh power bank, 4GB swivel flash drive.
- Packed in 2 piece cardboard gift box with precision cut cardboard insert.
- Packaging proudly Australian made.





**Chic Gift Set**

LL8262

- Titan pen, Velocity 2000mAh power bank and 4GB swivel flash drive.
- Packed in 2 piece cardboard gift box with laser cut foam insert.



**Chic Cardboard Gift Set**

LL8444

- Titan pen, Velocity 2000mAh power bank and 4GB swivel flash drive.
- Packed in 2 piece cardboard gift box with precision cut cardboard insert.
- Packaging proudly Australian made.



**Harbor Gift Set**

LL8274

- 4000mAh Matrix power bank, Hamilton pen and 8GB swivel flash drive.
- Packed in 2 piece cardboard gift box with laser cut foam insert.



**Harbor Cardboard Gift Set**

LL8445

- 4000mAh Matrix power bank, Hamilton pen and 8GB swivel flash drive.
- Packed in 2 piece cardboard gift box with precision cut cardboard insert.
- Packaging proudly Australian made.





**Jewel Gift Set**

LL8276

- 4000mAh Matrix power bank and 4GB swivel flash drive.
- Packed in 2 piece cardboard gift box with laser cut foam insert.



**Jewel Cardboard Gift Set**

LL8446

- 4000mAh Matrix power bank and 4GB swivel flash drive.
- Packed in 2 piece cardboard gift box with precision cut cardboard insert.
- Packaging proudly Australian made.



**Oasis Gift Set**

LL8277

- 4000mAh Matrix power bank, 4GB swivel flash drive & Napier pen.
- Packed in 2 piece cardboard gift box with laser cut foam insert.



**Oasis Cardboard Gift Set**

LL8431

- 4000mAh Matrix power bank, 4GB swivel flash drive & Napier pen.
- Packed in 2 piece cardboard gift box with precision cut cardboard insert.
- Packaging proudly Australian made.







**Osaka Gift Set**

LL8270

- Bamboo speaker and 4GB swivel flash drive.
- Packed in 2 piece cardboard gift box with laser cut foam insert.



**Osaka Cardboard Gift Set**

LL8447

- Bamboo speaker and 4GB swivel flash drive.
- Packed in 2 piece cardboard gift box with precision cut cardboard insert.
- Packaging proudly Australian made.



**Quay Gift Set**

LL8248

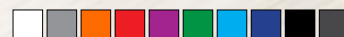
- 8000mAh Octavius power bank, 4GB flash drive & Napier pen.
- Packed in 2 piece cardboard gift box with laser cut foam insert.



**Quay Cardboard Gift Set**

LL8454

- 8000mAh Octavius power bank, 4GB flash drive & Napier pen.
- Packed in 2 piece cardboard gift box with precision cut cardboard insert.
- Packaging proudly Australian made.





**Sass Gift Set**  
LL8272

- 2000mAh Velocity power bank, Miami pen and 4GB swivel flash drive.
- Packed in 2 piece cardboard gift box with laser cut foam insert.



**Sass Cardboard Gift Set**  
LL8449

- 2000mAh Velocity power bank, Miami pen and 4GB swivel flash drive.
- Packed in 2 piece cardboard gift box with precision cut cardboard insert.
- Packaging proudly Australian made.



**Anthem Gift Set**  
LL8247

- Venture Bondi A5 notebook and Austin pen.
- Packed in 2 piece cardboard gift box with laser cut foam insert.



**Anthem Cardboard Gift Set**  
LL8453

- Venture Bondi A5 notebook and Austin pen.
- Packed in 2 piece cardboard gift box with precision cut cardboard insert.
- Packaging proudly Australian made.





**Bliss Gift Set**  
LL8243

- Matrix power bank, Opal pen and 4GB swivel flash drive.
- Packed in 2 piece cardboard gift box with laser cut foam insert.



**Bliss Cardboard Gift Set**  
LL8450

- Matrix power bank, Opal pen and 4GB swivel flash drive.
- Packed in 2 piece cardboard gift box with precision cut cardboard insert.
- Packaging proudly Australian made.



**Harmony Gift Set**  
LL8241

- Venture A5 notebook and Napier pen.
- Packed in 2 piece cardboard gift box with laser cut foam insert.



**Harmony Cardboard Gift Set**  
LL8441

- Venture A5 notebook and Napier pen.
- Packed in 2 piece cardboard gift box with precision cut cardboard insert.
- Packaging proudly Australian made.





**Ovation Gift Set**  
LL8242

- Venture A5 notebook and Opal mirror pen.
- Packed in 2 piece cardboard gift box with laser cut foam insert.



**Ovation Cardboard Gift Set**  
LL8432

- Venture A5 notebook and Opal mirror pen.
- Packed in 2 piece cardboard gift box with precision cut cardboard insert.
- Packaging proudly Australian made.



**Sephora Gift Set**  
LL8271

- Bamboo cover notebook, flash drive and push button pen.
- Packed in 2 piece cardboard gift box with laser cut foam insert.



**Sephora Cardboard Gift Set**  
LL8433

- Bamboo cover notebook, flash drive and push button pen.
- Packed in 2 piece cardboard gift box with precision cut cardboard insert.
- Packaging proudly Australian made.





### Fusion Gift Set

LL8275

- Stainless steel hip flask and aluminium bottle opener with 30mm split ring keytag.
- Packed in 2 piece cardboard gift box with laser cut foam insert.



### Pura Cardboard Gift Set

LL8451

- Soda drink bottle and Cascade coffee cup.
- Packed in 2 piece cardboard gift box with precision cut cardboard insert.
- Packaging proudly Australian made.



## FULL COLOUR Sleeves

Enhance your product with a full colour wrap around sleeve.



# Packs



PACKS



**Active Living Pack**  
LL8295

- Active Living Kit with Dry Bag, Zest Lunch Box, Protein Shaker / Storage Cup and Chill Towel.



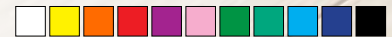
**Back To School Pack**  
LL6002

- Malibu pouch with Venture A5 notebook, Octave pen, 15cm ruler and full length coloured pencils pack.



**Bondi Beach Pack**  
LL8296

- Cooler bag, High bounce ball, Tahiti drink bottle, sunglasses and flyer.



**Bravo Care Pack**  
LL6020

- Bravo pack includes Lip balm, Daisy sticky notes, spearmints in flip top tin and Falcon pen packed in a Frenzy pencil case.



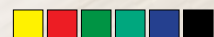
**Chic Cosmetic Pack**  
LL7032

- Chic cosmetic pack includes Montana RPET Felt cosmetic bag, Ritz lip balm, Wheat fibre comb and emery board.



**Children's Face Masks 4 Pack**  
LL8956

- Pack of 4 premium children's cotton face masks.
- 3 layers of cotton and for an extra comfortable fit two black elastic ear straps.





**Children's Face Mask  
with Hand Sanitiser Pack**  
LL6031

- Pack containing hand sanitiser and children's deluxe face mask.



**Colouring In Long Handle Tote Bag  
with Crayons**  
LL5521

- Custom printed white cotton long handle bag.
- With 8 assorted crayons.



**Colouring In Short Handle Calico  
Bag with Crayons**  
LL5522

- Custom design printed on short handle calico bag.
- With 8 assorted crayons.



**Colouring In Short Handle Tote Bag  
with Crayons**  
LL5520

- Custom design printed on white cotton short handle bag.
- Includes 8 assorted non toxic coloured wax crayons.



**Colouring In Short Handle Tote Bag  
with Pencils**  
LL5523

- Custom design printed on white cotton short handle bag.
- Includes 6 half size sharpened coloured pencils in cardboard box.



**Colouring In Long Handle Tote Bag  
with Pencils**  
LL5524

- Custom design printed on white cotton long handle bag with pencils.
- Includes 6 half size sharpened coloured pencils in cardboard box.







**Conference Pack**  
LL6010

- Malibu pouch with Venture A5 notebook, Transparent flat drink bottle, Falcon pen.



**Daydream Travel Pack**  
LL6029

- Travel pack including Cotton face mask, Gel hand sanitiser, wet wipes in zippered polyester case.



**Deluxe Face Mask with Hand Sanitiser Pack**  
LL6023

- Pack containing deluxe cotton face mask with hand sanitiser in a poly bag.



**Eco Pack**  
LL8292

- Byron produce bag, Stax lunch box and Vulcan wheat fibre coffee cup.



**Elevate School Pack**  
LL6015

- Elevate pack with handy highlighter and script stationery set.
- Includes digital cardboard header on top of bag.



**Encore Office Pack**  
LL6014

- Encore pack with Daisy sticky notes, Survey notebook, Viva pen and 50 gram bags of jelly beans in cello bag.
- Includes digital cardboard header on top of bag.





**Espresso Coffee Cup and Speaker Pack**  
LL8294

- Alpine cooler bag, Magnum ceramic mug and Tango bluetooth speaker.



**Exec Gift Pack**  
LL8293

- Tundra cooler bag, Leisure picnic blanket, Manta vacuum cup and Tango bluetooth speaker.



**Fiesta Pack**  
LL7051

- Mural Pencil/Crayon Set and Hi Bounce Ball in Drawstring Pouch.



**Get Crafty Calico Bag**  
LL531

- Your custom design printed on calico folding shopping bag.
- Includes 8 assorted coloured crayons.



**Gold Coast Pack**  
LL6004

- Tahiti drink bottle, horizon sunglasses packed in short handle cotton bag.



**Intro Pack**  
LL6016

- Intro pack includes Doctor Mop Top pen, Lip balm stick, Microfibre lens cloth and 50 grams of jelly beans in clear zippered case.





**Kids Fun Pack**  
LL5525

- Your custom design printed on a kraft paper pouch.
- Includes 8 assorted non toxic coloured wax crayons packed in pouch.



**Merit School Pack**  
LL6018

- Pack includes tourist A5 notebook, viva stylus pen & highlighter, high bounce ball and jelly beans in 50 gram bag packed in clear pencil case.



**Office Pack**  
LL8299

- Sumo lunch cooler with Venture notebook, Napier pen and Flat drink bottle.



**Picnic Pack**  
LL8300

- Lunch cooler bag with cutlery set, reusable cup and flat drink bottle.



**Refresh Travel Pack**  
LL0336

- Bamboo toothbrush with wheat fibre comb packed in a handy travel pouch with drawstring closure.



**Shield Face Mask with Hand Sanitiser Pack**  
LL6025

- Pack contains hand sanitiser and shield cotton face mask in individual poly bag.





**Summer Beach Pack**

LL6000

- Paddle / bat & ball set, Chill cooling towel in pouch and Horizon sunglasses packed in black drawstring bag.



**Tradie Pack**

LL8298

- Alpine cooler bag with Surf stubby cooler, Arvo bottle opener and Kick cup.



**Tradeshow Pack**

LL8297

- Short handle cotton bag, hand sanitiser, napier pen and venture Supreme notebook.



**Ultra Sunglasses Pack**

LL4563

- Ultra sunglass pack with RPET Felt sunglasses pouch with bamboo sunglasses with tinted lenses.



**Wellbeing Pack**

LL6027

- Wellbeing pack in zippered pouch with Soda stainless steel drink bottle, Venture notebook.



**Wellness Pack**

LL6013

- Lip balm and gel pack in clear cello bag.
- Includes printed cardboard header on top of bag.



# Confectionery



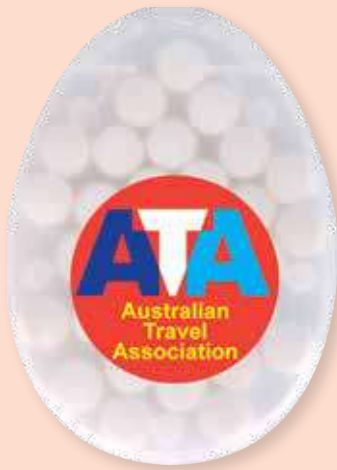
## Accreditation

Our confectionery packaging facility has been accredited by HACCP – Australia's food safety certification programme.

Choose your corporate or club colours  
mini jelly beans from this palette



Important - M&M's and Jelly Beans are sourced from multiple manufacturers, variations in colour, taste, texture and size may apply.



**Egg Shape Sugar Free Breath Mints**  
LL062

- Snap lock opening.
- Approx. 30 sugar free mints.



**Rectangular Sugar Free Breath Mints**  
LL077

- Snap lock opening.
- Approx. 50 sugar free mints.
- Credit card size.



**Click It Mint Tins**  
LL073

- Container with approx 60 sugar free mints.
- Foiled sealed click lock tin lid in a plastic container.



**Sugar Free Breath Mints in Silver Tin**  
LL804

- Approx 100 mints.
- Poly bagged mints packed in hinged lid tin.



**Spearmints in Flip Top Tin 25g**  
LL805

- Large refreshing sugar free spearmints in flip top tin.
- 25g of mints.
- Shrink wrapped lid to seal in freshness.



**Sugar Free Breath Mints in Slider Tin**  
LL807

- Approx 50 mints.
- Silver tin with sliding lid.





**Assorted Jelly Party Mix – 180g**  
LL422

- 180g cello bag of assorted jelly party mix.
- Contents vary in each bag.



**Australian Made Assorted Jelly Party Mix – 50g**  
LL420

- 50g cello bag of assorted jelly party mix.
- Contents vary.



**Australian Made Jelly Party Mix – 50g**  
LL419

- Tuck end pillow pack filled with confectionery.
- Made and packaged in Australia.



**Assorted Colour M&M's – 50g**  
LL33012

- 50 gram cello bag of assorted colour milk chocolate M&M's (Green, Red, Orange, Yellow, Brown and Blue).
- Proudly made and packaged in Australia.



**Assorted Colour Mini Jelly Beans – 50g**  
LL31470

- 50g cello bag of assorted mini jelly beans.
- Mix of 9 great colours and flavours.



**Corporate Colour Mini Jelly Beans – 50g**  
LL31450

- 50 grams cello bag of corporate colour mini jelly beans.
- Your choice of jellybeans, choose from 9 great colours and flavours.





**M&M's – 50g carton**  
LL33018

- 50 grams of assorted colour M&M's (Green, Red, Orange, Yellow, Brown and Blue) packed in white tuck box.
- M&M's are proudly made and packaged in Australia.



**Assorted Colour Jelly beans**  
– 50g carton  
LL31474

- 50 grams of assorted colour mini jelly beans packed in white tuck box.
- Mix of 9 great colours and flavours.



**Corporate Colour Jelly beans**  
– 50g carton  
LL31476

- 50 grams of corporate colour mini jelly beans packed in white tuck box.
- Your choice of jelly beans, choose from 9 great colours and flavours.



**Assorted Colour M&M's – 95g**  
LL33015

- 95 grams of assorted colour milk chocolate M&M's (Green, Red, Orange, Yellow, Brown and Blue) packed in pillow pack.
- M&M's are proudly made and packaged in Australia.



**Assorted Colour Mini Jelly Beans**  
– 100g  
LL4846

- 100 grams of assorted colour mini jelly beans packed in pillow pack.
- Mix of 9 great colours and flavours.



**Corporate Colour Mini Jelly Beans**  
– 100g  
LL4866

- 100 grams of corporate colour mini jelly beans packed in pillow pack.
- Your choice of jellybeans, choose from 9 great colours and flavours.







**Assorted Colour M&M's  
– 50g cello bag  
LL33016**

- 50 gram cello bag of assorted colour milk chocolate M&M's (Green, Red, Orange, Yellow, Brown and Blue) packed in 2 piece silver rectangular tin with gold tin lining and gold rolled rim.



**Assorted Colour Mini Jelly Beans  
– 50g cello bag  
LL334**

- 50 gram cello bag of assorted mini jelly beans packed in 2 piece silver rectangular tin with gold tin lining and gold rolled rim.
- Mix of 9 great colours and flavours.



**Corporate Colour Mini Jelly Beans  
– 50g cello bag  
LL335**

- 50 gram cello bag of corporate colour mini jelly beans packed in 2 piece silver rectangular tin.
- Your choice of jelly beans, choose from 9 great colours and flavours.



**Assorted Colour M&M's  
– 50g cello bag  
LL3401**

- 50 gram cello bag of assorted colour milk chocolate M&M's (Green, Red, Orange, Yellow, Brown and Blue) packed in 2 piece silver round tin.



**Assorted Colour Mini Jelly Beans –  
50g cello bag  
LL3402**

- 50 gram cello bag of assorted colour mini jelly beans packed in 2 piece silver round tins.



**Corporate Colour Mini Jelly Beans  
– 50g cello bag  
LL3403**

- 50 gram cello bag of corporate colour mini jelly beans packed in 2 piece silver round tins.
- Your choice of jellybeans, choose from 9 great colours and flavours.





**Assorted Colour M&M's – 550g**  
LL33001

- 550 grams of assorted colour milk chocolate M&M's (Green, Red, Orange, Yellow, Brown and Blue) shrink wrapped in clear dispenser with scoop.
- Proudly made and packaged in Australia.



**Assorted Colour Mini Jelly Beans – 630g**  
LL4871

- 630 grams of assorted colour mini jelly beans packed in dispenser with scoop.
- Mix of 9 great colours and flavours.



**Corporate Colour Mini Jelly Beans – 630g**  
LL4872

- 630 grams of corporate colour mini jelly beans packed in dispenser with scoop.
- Your choice of jellybeans, choose from 9 great colours and flavours.



**Assorted Colour M&M's – 145g**  
LL33004

- 145 grams of assorted colour milk chocolate M&M's (Green, Red, Orange, Yellow, Brown and Blue) packed in clear.
- Proudly made and packaged in Australia.



**Assorted Colour Mini Jelly Beans – 160g**  
LL3146

- 160 grams of assorted mini jelly beans packed in clear container with white twist top lid.
- Mix of 9 great colours and flavours.



**Corporate Colour Mini Jelly Beans – 160g**  
LL3149

- 160 grams of corporate colour mini jelly beans packed in clear container with white twist top lid.
- Choose from 9 great colours and flavours.





**Assorted Colour M&M's  
– 250g  
LL8621**

- 250g of assorted colour milk chocolate M&M's (Green, Red, Orange, Yellow, Brown and Blue) shrink wrapped in Double Wall Stainless Steel Barrel Mug.
- Proudly made and packaged in Australia.



**Assorted Colour Mini Jelly Beans  
– 280g  
LL8623**

- 80 grams of assorted mini jelly beans shrink wrapped in stainless steel double wall barrel mug.
- Mix of 9 great colours and flavours.



**Corporate Colour Mini Jelly Beans  
– 280g  
LL8625**

- 280 grams of corporate colour mini jelly beans shrink wrapped in stainless steel double wall barrel mug.
- Choose from 9 great colours and flavours.



**Assorted Colour Lollipops – 16  
units. LL8627  
Corporate Colour Lollipops – 16  
units. LL8630**

- 16 assorted lollipops shrink wrapped in double wall stainless steel barrel mug.





**Kick Coffee Cup with Jelly Beans**  
LL0444

- 320ml clear reusable Kick coffee cup.
- Includes heat resistant silicone sleeve and screw on lid and 50g bag of jelly beans.



**Vienna Coffee Cup with M&M's**  
LL0433

- 320ml glass reusable Vienna coffee cup.
- With silicone sleeve and secure fitting lid.
- Includes 50g pack of assorted colour M&M's.



**Corporate Lollipops**  
LL560

**Assorted Colour Lollipops**  
LL555

- Colour lollipops individually cello wrapped.
- 6 Flavours - Red (Strawberry), Yellow (Lemon), Blue (Tutti Frutti), Green (Lemon), Orange (Orange), Purple (Grape).



**Assorted Flavour Fruit Rings**  
LL426

- Assorted flavour jelly fruit lollies.
- Wrapped in foil to keep fresh.
- Ingredient panel included on label.
- Gelatine free.



Office



**FREE**  
**M&M**  
**Dispenser**  
with 1000 Stock Pens





**Aspen Bamboo Pen with Stylus**  
LL2035

- Push button pen made from bamboo with metal accents.
- Includes rubber stylus for touch screens.
- Black refill.



Chrome  
Gunmetal



**Aspen Bamboo Pen**  
LL2033

- Bamboo barrel push button pen with metal accents.
- Black refill.

Chrome  
Gunmetal



**Aspen Paper Pen**  
LL2039

- Recycled Paper barrel ballpoint pen with Gunmetal accents.
- Plastic button, tip & metal clip.



**Austin Pen with Stylus**  
LL2111

- Coloured aluminium soft feel barrel.
- Push button rubber stylus.
- Chrome clip, tip and rings on the barrel.
- Black refill.



**Bamboo Pen**  
LL2021

- Eco friendly bamboo push button pen.
- Black refill.



**Banner Pen**  
LN6619

- Push button pen with pull out laminated banner and rubber grip.
- Banner printed 1 or 2 sides.



**Beat Pen**  
LL488

- White barrel push button pen with silver accents and coloured grips.
- Black refill.



**Bling Pen**  
LL3081

- Push button pen.
- Metal clip.
- Blue refill.



**Chameleon Pen**  
LL3285

- Twist action pen with stylus.
- Mix and match barrel and clip colours to suit your logo.
- Black refill.



**Chrystalis Pen**  
LL511

- Push button pen with solid colour rubber grip.
- Black refill.





**Concorde Pen**  
LL432

- Push button pen.
- Comfort grip.
- Black refill.



**Constellation Pen**  
LL625

- Push button aluminium pen.
- Comfort grip.
- Black refill.



**Falcon Pen**  
LL6801

- White barrel push button with large clip.
- Black refill.



**Gemini Pen**  
LL0468

- Coloured barrel twist action pen with chrome highlights.



**Gemini Metallic Pen**  
LL0469

- Coloured metallic barrel twist action pen with chrome highlights.
- Black refill.



**Hamilton Pen**  
LL3276

- Aluminium barrel pen with silver accents.
- Black refill.



**Helix Pen**  
LL3282

- Gloss aluminium barrel pen with silver accents and black stylus.
- Black refill.



**Hook Pen**  
LL3295

- Two/Tone concertina push cap action pen.
- Flat pocket clip.
- Black refill.



**Hornet Pen**  
LL2037

- Bamboo barrel with chrome button and tip.
- Matching coloured clip and grip.
- Push button pen.
- Black refill.



**Javelin Pen**  
LL0474

- Push button pen and gloss barrel.
- Black refill.





**Mac Pen**  
LL8018

- Push button pen.
- White barrel with chrome button.
- Matching coloured clip and grip.
- Black refill.



**Matador Bamboo Pen**  
LL2131

- Bamboo barrel ballpoint pen with a 50/50 blend of wheat fibre and polypropylene button, clip and tip.
- Push button action.



**Matador Cardboard Pen**  
LL200

- Push button unbleached cardboard barrel pen.
- Black refill.



**Matador Cork Pen**  
LL209

- Push button pen.
- Barrel made from cork.
- Button, clip and tip made from wheat fibre.
- Black refill.



**Matador Eco Pen**  
LL202

- Cardboard barrel pen with wheat fibre button, clip and tip
- Black refill.



**Matador PLA Eco Pen**  
LL212

- Push button cardboard barrel pen.
- PLA button, clip & tip.
- PLA is a biodegradable plastic.
- Black refill.



**Miami Pen**  
LL3275

- Aluminium barrel with silver accents.
- Black refill.



**Mop Top Eco Pen**  
LL4604

- Eco mop top pen with stylus.
- Microfibre hair.
- Barrel & head made from 50/50 wheat fibre and BPA free polypropylene.



**Mop Top Jazz Pen**  
LL4602

- Sparkly mop top pen with stylus.
- Silver bling clip.
- Black refill.



**Mop Top Pen / Stylus**  
LL4600

- Push button pen / stylus with microfibre hair, suitable for cleaning touch screen surfaces.
- Fun for all.
- Black refill.







**Medical Mop Top Pen / Stylus**  
LL1724

- Push button pen with stethoscope clip / stylus with microfibre hair, suitable for cleaning touch screen surfaces.
- Black refill.



**Napier Pen**  
LL3271

- Matte finish aluminium barrel pen with silver accents.
- Black refill.



**Napier Bamboo Pen**  
LL3274

- Push button bamboo barrel pen with silver accents.
- Black refill.



**Napier Black Edition Pen**  
LL3272

- Matte finish aluminium barrel pen with black accents.
- Black refill.



**Napier Eco Pen**  
LL3283

- Push button pen with silver accents.
- Made from a 50/50 blend of wheat fibre and polypropylene.
- Black refill.



**Napier Deluxe Pen**  
LL3270

- Soft feel, aluminium barrel pen with chrome accents.
- Deluxe matte finish.
- Black refill.



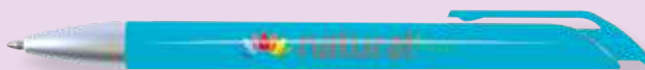
**Napier Gold Edition Pen**  
LL3279

- Push button, gloss finish aluminium pen with gold highlights.
- Can be laser engraved to a shiny gold finish.
- Black refill.



**Napier Paper Pen**  
LL3292

- Recycled Paper barrel ballpoint pen.
- Silver accents.



**Octave Pen**  
LL0466

- Gloss barrel push button pen with matte silver tip.
- Black refill.



**Opal Pen**  
LL3280

- Soft feel, aluminium barrel pen with black accents and stylus.
- Black refill.





**Orlando Mirror Pen**  
LL3278

- Soft feel, aluminium barrel pen with black accents.
- Laser engraved in a silver mirror finish.
- Black refill.



**Raptor RPET Pen**  
LL2044

- Push button pen made from RPET (recycled plastic bottles).
- Black refill.



**Santa Fe Stylus Pen**  
LL3260

- Metallic twist action pen with silicone stylus suitable for touch screens.
- Black comfort grip.
- Black refill.



**Starion Pen**  
LL3289

- Matte finish, coloured pen with black stylus and silver accents. This pen can be laser engraved to a mirror finish.
- Black refill.



**Stingray Pen**  
LL1472

- Push button pen with shiny silver highlights.
- Black refill.



**Stratos Cardboard Pen**  
LL115

- Cardboard cap and barrel pen.
- Pull off cardboard cap.
- Eco symbol printed on cap.



**Supra 4 Colour Pen**  
LL0326

- Push button pen made from a 50/50 blend of wheat fibre and polypropylene.
- 4 different ink colours black, red, green, and blue with a grey grip.



**Supra 4 Colour White Pen**  
LL0329

- White push button ballpoint pen.
- 4 different ink colours Black, Blue, Green, Red.
- Grey grip.



**STYB K1 Highlighter**  
LN34299

- Pigmented gloss ink, long lasting colours.
- Extra strong bevelled edge tip.
- 4mm line width.



**STYB K1 Mega Roller**  
LN34296

- 0.7mm stainless steel tip with tungsten carbide ball gives a smooth and consistent writing line.





**Titan Pen**  
LL3294

- Solid colour push button pen with chrome highlights.
- Blue refill.



**Trident Pen/Stylus Highlighter**  
LN3359

- Matte metallic push button pen with stylus.
- Chisel highlighter and cap.
- Black clip.



**Vespa Pen**  
LL1461

- Push button pen.
- White barrel with chrome button, tip and ring.
- Black refill.



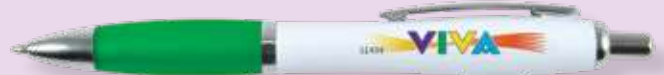
**Viva Stylus Pen**  
LL446

- Twist action pen with white barrel, silver clip and coloured comfort grip.
- Matching colour stylus on top.
- Black refill.



**Viva Stylus Pen & Highlighter**  
LL447

- Twist action pen with white barrel, silver clip and coloured comfort grip.
- Matching colour stylus and cap with a yellow wax highlighter.



**Viva Pen White Barrel**  
LL434

- White push button pen with coloured comfort grip.
- Black refill.



**Viva Pen**  
LL433

- Transparent push button pen.
- Soft comfort grip.
- Black refill.



**Viva Bamboo Pen**  
LL435

- Bamboo barrel push button pen with silver accents.
- Comfortable to use.
- Black refill.



**Viva Eco Pen**  
LL436

- Push button pen with silver accents.
- Made from a 50/50 blend of wheat fibre and polypropylene.
- Black refill.



**Cardboard Pen Sleeve**  
LL0512

- Cardboard pen sleeve.
- Pocket clip cutaway allows for a nice pen presentation.





**Black Velvet Pouch**  
LL02

- Black velvet pen pouch.
- Holds most standard size pens.



**Black Cardboard Pen Box**  
LL0501

- Black cardboard pen box with slide off sleeve.



**Recycled Newspaper Pencil**  
LL1007

- White full length round sharpened pencils.
- Made from recycled newspapers.



**Sharpened Timber Pencil**  
LL10

- Round full length sharpened pencils.



**Chippy Carpenters Pencil**  
LL22

- Unsharpened timber carpenters pencil.



**Chippy Carpenters Pencil**  
LN22

- Indent colours: Custom colours 10,000 up to most Pantone colours.



**Transparent 30cm Ruler**  
LL11

- 30cm matte transparent ruler with metric & imperial calibrations.
- Rounded corners.



**Eco 30cm Ruler**  
LL19

- 30cm ruler with metric and imperial calibrations.



**Axis 30cm Wooden Ruler**  
LL2327

- 30cm ruler.
- Made from beech wood.



**Bamboo 30cm Ruler**  
LL2328

- 30cm ruler manufactured from Eco-friendly Bamboo.
- Metric measurements printed on the top of ruler.





### White 30cm Ruler

LL12

- 30cm matte white ruler with metric & imperial calibrations.
- Rounded corners.



### White 15cm Ruler

LL14

- 15cm ruler with metric/imperial calibrations.



### Drone Wax Highlighters

LL1219

- Set of 4 mini extendable wax highlight markers in case.
- Works on a variety of paper surfaces.
- Colours - Yellow, Blue, Green and Pink.



### Handy Highlighter

LL005

- White hand shape highlight marker with 5 chisel tip highlight markers.
- Pink, Orange, Yellow, Green and Blue highlight finger colours with matching caps.



### Trio Highlighter

LL03

- Triangular highlight marker.
- 3 chisel tip highlight markers.





**Casino Tri-Highlighter**

LL208

- Round tri-highlight marker.
- White centre with Blue, Pink and Yellow chisel shaped fluorescent highlight colours with matching caps.



**Spinner Highlighter**

LL8448

- Spinner tri-colour highlight marker.
- White body with 3 chisel tip highlight markers. Yellow, Pink, Blue with matching coloured click in caps.



**Recycled Highlighter**

LL4245

- Highlighter case made from recycled plastic.
- Highlighter has yellow ink.
- Chisel point highlighter.



**Daisy Highlighter**

LL210

- Colourful flower shaped highlight marker.
- White centre with pink, orange, yellow, green and blue chisel shaped fluorescent highlight colours with matching caps.



**Queen Wax Highlighters**

LL8563

- Clear case with three mini wax highlight markers.
- Superior shelf life to traditional highlight markers - leave the lid off and they still work.



**Rectangular Pencil Sharpener**

LL72

- Pencil sharpener with specially designed lift off lid enables clean disposal of pencil shavings.

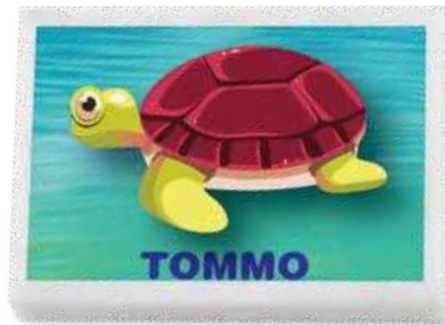




### Pencil Sharpener / Eraser

LL8493

- 2 in 1 pencil sharpener / eraser.
- Pull cap for clean disposal of pencil shavings.



### White Eraser

LL45

- White rectangular eraser with a great print area for your logo or copy.
- A must for every stationery set.



### Doodle Pencils in Tin

LL1295

- Set of 12 assorted coloured, half size, sharpened pencils in hinged lid tin.



### Mighty Pencil Set

LL1907

- Set of 10 full length sharpened colouring pencils, in natural cardboard box with window.



### Activity Pencil Set

LL8152

- Set of 6 assorted half size, sharpened, coloured timber case pencils in cardboard box, with sharpener.



### Rembrandt Pencils in Tube

LL193

- 12 assorted 1/2 size sharpened coloured pencils in unbleached cardboard tube.





### Koolio Drawing Set

LL8064

- Set of 8 assorted coloured, half size, sharpened pencils in transparent case, with 20 preprinted colouring in sheets.



### Collage 12 Pencil Drawing Set

LL8393

- Drawing set of 12 coloured pencils and a wooden pencil sharpener.



### Monet Pencil Set

LL192

- Set of 6 half size sharpened assorted coloured pencils in recyclable unbleached cardboard box with lid.



### Tourer Pencil Set

LL1904

- Economy set 6 half size sharpened coloured pencils in recyclable unbleached cardboard tuck box.



### Script Stationery Set

LL0728

- Stationery set in unbleached recyclable cardboard box.
- Contains 3 x natural case lead pencils, 15cm timber ruler, white eraser & natural pencil sharpener.



### Panorama Coloured Pencil Set

LL1909

- Set of 12 full sized sharpened natural coloured pencils in timber case with sliding lid.
- The lid has a 20cm metric/8" imperial ruler markings on 1 side.







**Pablo Pencil Set**  
LL1914

- Set of 6 mini coloured pencils in rectangular natural kraft box with removable lid.



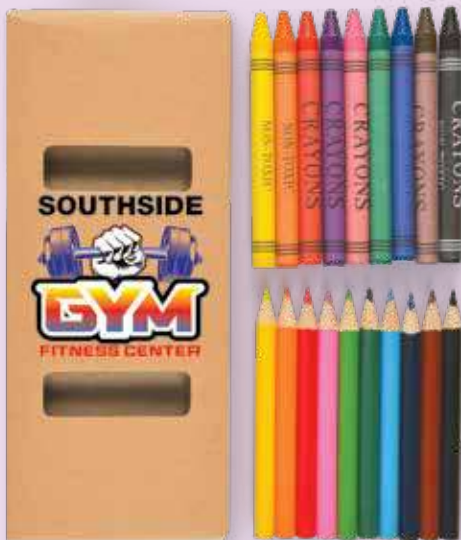
**Da Vinci Crayon Set**  
LL8905

- 30 assorted non toxic crayons in unbleached cardboard tube.



**Dali Crayon Set**  
LL196

- 8 assorted non toxic crayons in white display box.



**Mural Pencil/Crayon Set**  
LL1911

- Set of 10 coloured mini pencils and 9 crayons in a natural kraft tuck box with window.



**Louvre Crayon Set**  
LL198

- 8 assorted non toxic crayons in clear PVC zip lock pouch.



**Sketch Pavement Chalk**  
LL8909

- 6 piece set of large sized chalk sticks.
- Suitable for pavement or blackboards.
- Non toxic and dustless.





**Kraft Paper Pencil Case**  
LL7014

- Zippered utility pouch made from kraft paper.
- Extremely light weight and durable.
- Black zipper.



**Kids Fun Pack**  
LL5525

- Your custom design printed on pouch made from kraft paper.
- Includes 8 assorted non toxic coloured wax crayons packed in pouch.



**Cork Avalon Pencil Case**  
LL4634

- Natural cork utility / pencil case.
- Handy cork strap and zip.



**Element Stationery Set**  
LL0726

- Stationery set of 15cm wooden ruler, wooden pencil sharpener, 2 x wooden pencils, cardboard pen and eraser.
- Case made from a 50/50 blend of wheat fibre and polypropylene.



**Stanford Stationery Set**  
LL21341

- Bamboo stationery set packed in PVC pencil case with zipper.
- Includes 20 sheet notepad, bamboo pencil sharpener, wooden timber pencils, eraser and bamboo ruler.



**Delight Pencil Case**  
LL406

- Large clear PVC pouch with white zip closure.
- Use to hold stationery, kids items, cosmetics, first aid items, sample collection and computer cables.





### Admire Pencil Case

LL444

- Clear PVC case with white back & zip closure.
- Use to hold stationery, kids items, cosmetics, first aid items, medications, sample collections, labels, coupons and computer cables.



### Yale Stationery Set

LL2134

- Bamboo stationery set packed in cello bag.
- Includes 20 sheet notepad, bamboo pencil sharpener, wooden timber pencils, eraser and bamboo ruler.



### Frenzy Pencil Case

LL4630

- 600D polyester pencil case with silver stitching and zip closure.
- Use to hold stationery, kids items, cosmetics, first aid items and computer cables.



### Adore Pencil Case

LL4628

- Natural canvas organiser with contrast stripe & zip closure.
- Use to hold stationery, kids items, cosmetics, first aid items, medications and computer cables.



### Cherish Pencil Case

LL7023

- PVC pencil case / carry case with internal mesh divider and zip with pull tag.
- Use to hold stationery, kids items, cosmetics, first aid items, medications and computer cables.



### Montana Utility Case

LL7029

- Utility pouch made from 2mm RPET felt.
- RPET material is produced from recycled PET 2L water bottles.
- Used to hold stationery or tech items.





**Vibe Stationery Set**  
LL4442

- Stationery set in pencil case including eraser, 15cm ruler, coloured pencils in pack & Octave pen.



**Esprit PVC Pouch**  
LL7025

- A4 sized PVC pouch with mesh insert separator.
- Zip closure with handy toggle.



**Amazon Notebook**  
LL9757

- Eco friendly bamboo cover notebook with 70 leaves, 140 spiral bound recycled lined pages (70gsm).
- Includes bamboo/silver push button pen.



A5



A5

**Astro Hard Cover Recycled Leather Notebook**  
LL5095

- A5 hard cover notebook made from recycled leather over cardboard.
- Includes 80 ruled cream pages (70gsm) and black pen loop, elastic closure and ribbon marker.



**Astro Soft Cover Recycled Leather Notebook**  
LL8541

- Soft PU cover A5 Notebook with ribbon page marker and matching colour edge stitching.
- 96 leaves, 192 lined cream pages (70gsm).

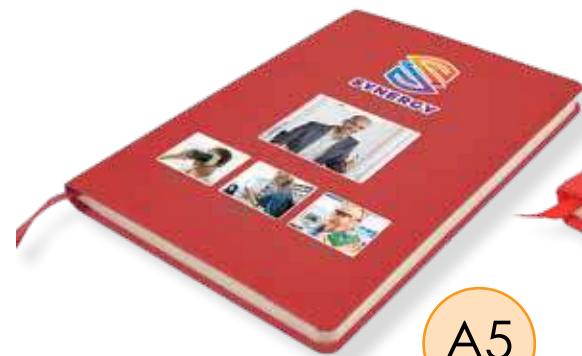


A4

**Capella A4 Notebook**  
LL5079

- A4 sized notebook with PU cover.
- Includes 96 ruled white pages and matching pen loop, elastic closure and ribbon marker.





A5

**Genesis A5 Notebook**  
LL8539

- Soft PU cover A5 notebook with ribbon page marker and matching colour edge stitching.
- 96 leaves, 192 lined cream pages (70gsm).



**Illusion Notebook**  
LL5099

- PU bound cover notebook with bookmark, elastic closure and expandable inner pocket.
- 96 leaves, 192 lined cream pages (70gsm).



A5

**Milko Notepad With Pen**  
LL8337

- Spiral bound notepad made from recycled milk cartons.
- 70 sheets, 140 lined pages (70gsm).
- White elastic retaining strap and pen loop.
- White barrel cardboard pen with black ink.



**Odyssey Notebook**  
LL2705

- Transparent notebook with push button pen.
- 80 leaves, 160 unlined white pages (70gsm).



**Safari Bamboo Notebook**  
LL3065

- Eco friendly bamboo veneer cover notebook with 80 leaves, 160 recycled lined pages (70gsm).



**Savannah Notebook**  
LL0950

- Unbleached cardboard cover (600gsm) spiral bound notebook.
- 70 sheets, 140 lined cream pages (70gsm).





**Savannah Notebook  
with Matador Pen**  
LL0951

- Unbleached cardboard cover (600gsm) spiral bound notebook with Matador pen.
- 70 sheets, 140 lined cream pages (70gsm).



**Savannah Notebook  
with Eco Matador Pen**  
LL0952

- Unbleached cardboard cover (600gsm) spiral bound notebook with Matador eco pen.
- 70 sheets, 140 lined cream pages (70gsm).



**Scribe Spiral Notebook**  
LL2655

- Spiral notebook with matching pen in black pen loop.
- 68 leaves, 136 lined white pages (60gsm).



**Sparky Pocket Notebook**  
LL2709

- Pocket notebook with robust cover.
- 70 leaves, 140 lined white pages (70gsm).



**Stone Paper Notebook**  
LL9753

- Recycled cardboard cover side spiral bound notebook.
- 68 leaves, 136 lined pages (120gsm) of paper made from stone/rock.



**Survey Pocket Notebook**  
LL8372

- Spiral cardboard cover notebook.
- 50 leaves, 100 white lined pages (70gsm).





A5

**Tourist A5 Notebook**

LL0944

- A5 natural cardboard cover with black accent.
- 24 leaves, 48 lined white pages (70gsm).

**Tradie Notebook with Pen**

LL8334

- Unbleached cardboard cover top spiral notebook.
- 48 leaves, 96 lined pages.

**Trek Notebook**

LL0946

- Cardboard cover spiral notebook with magnetic lift off closure.
- 50 leaves, 100 lined white pages (70gsm).



A5

A5

**Twigg Bamboo Notebook**

LL3068

- Flip up, bamboo veneer cover notebook with 80 leaves, 160 white lined pages (70gsm).

**Venture A5 Notebook**

LL5087

- PU A5 notebook with coloured elastic retaining closure and matching ribbon page marker.
- 96 leaves, 192 lined cream pages (70gsm).

**Venture Bondi A5 Notebook**

LL5081

- A5 notepad with a combination cover of grey heather look and coloured PU.
- Polyester page marker and elastic retaining closure and elastic pen loop to match the cover feature colour.





A5



A5



A5

**Venture Bondi A5 Notebook with Austin Pen**  
LL5093

- A5 notepad with a combination cover of grey heathered look and coloured PU.
- Includes push button, aluminium pen with soft feel coating and stylus.



**Venture A5 Natural Notebook**  
LL5091

- Natural cover A5 notebook with neutral colour elastic strap, pen loop and page marker.
- 80 leaves, 160 lined white pages (70gsm).



**Venture A5 Natural Notebook with Matador Pen**  
LL5092

- Natural cover A5 notebook with neutral colour elastic strap, pen loop and page marker.
- Includes unbleached cardboard barrel pen with plastic button cap clip & tip.



A5



A5



A5

**Venture Snowy A5 Notebook**  
LL5096

- A5 hard cover notebook with white elastic retaining closure, pen loop and matching ribbon page marker.
- 96 leaves, 192 lined pages (70gsm).
- Hard cover & leaves/pages made from recycled milk cartons.



**Venture Supreme A5 Notebook**  
LL5089

- PU A5 notebook with matching colour elastic retaining closure, ribbon page marker, pen loop and coloured edged pages.
- 80 leaves, 160 lined white pages (70gsm).



**Venture Supreme A5 Notebook with Napier Pen**  
LL5094

- A5 notepad with matching colour elastic retaining strap, ribbon page marker and coloured edge pages.
- Includes push button, aluminium pen.







**Midas Sticky Notes / Notepad**  
LL6654

- Notepad with 40 sheets unlined white pages (70gsm) and 6 blocks of paper sticky notes.
- Five coloured blocks of sticky notes (15mm x 44mm) & a larger block (75mm x 30mm) sticky notes.



**Notebrick**  
LL8131

- 400 sheets block of paper notes with PVC binding.
- Great for note taking in the office or home and staying on top of important tasks.



**Codex Spiral Sticky Notes**  
LL8829

- Unbleached cardboard cover, spiral bound notebook consisting of 6 layers.
- 5 layers of repositionable notepads 75 x 50mm (25 leaves).



**Codex Cork Sticky Notes**  
LL3062

- Cork covered spiral bound notebook consisting of 6 layers.
- 5 layers of repositionable notes 75 x 50mm (25 leaves).



**Circle Bookmark**  
LL8860

- Circle shaped 13cm/5inch cardboard bookmark ruler.
- 1 block of repositionable notepads with 15 leaves.



**Business Card Bookmark**  
LL8868

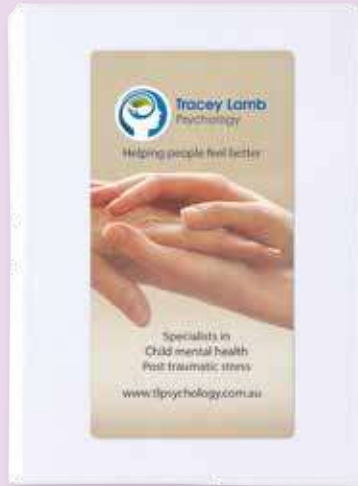
- Business card shaped dye cut bookmark 13cm/5inch cardboard bookmark ruler.
- 1 block of repositionable notepads with 15 leaves.





**Daisy Sticky Notes**  
LL8825

- Daisy shaped sticky note book with 5 coloured notes (25 per colour).



**Windsor Sticky Notes**  
LL9751

- Mini notebook with bound cover front and back.
- Contains 1 repositional notepad and 5 colour assorted neon paper tapeflags.



**Lumix Bamboo Sticky Notes**  
LL3073

- Mini sticky notes book with bamboo veneer cover.
- Contains 5 blocks of coloured noteflags (25 leaves).



**Circle Bamboo Bookmark**  
LL8858

- Circle shaped 13cm/5inch bamboo bookmark ruler.
- 1 block of repositionable notepads with 25 leaves.



**Croc Magnetic Clip**  
LL2779

- Heavy duty clip with strong magnet.
- Attaches to filing cabinets and most metal surfaces.





**Corfu Retractable Name Badge Holder**  
LL451

- Retractable name badge holder.
- Extends to 90cm.



**Wheat Straw Retractable Badge Holder**  
LL452

- Retractable name badge holder made from wheat straw.
- Extends to 90cm.



**Azure Sublimated Lanyard**  
LN6310

- Sublimated full colour (satin feel) lanyard printed 2 sides.
- Choice of 15mm, 20mm, 25mm widths. Standard - swivel metal hook and breakaway fitting.



**Artemis Woven Lanyard**  
LN6315

- Woven printed lanyard screen printed 1 side.
- Choice of 15mm, 20mm, 25mm widths.



# Health





### Wave Gel Hand Sanitiser

LL4678

- 30ml alcohol based clear gel in squeeze bottle with twist off cap.
- Kills most germs and leaves hands feeling refreshed and clean.
- 62% alcohol content.



### Ritz Lip Balm

LL2018

- Nourishing lip balm with soothing vanilla to moisturise dry lips.
- Shiny UV plated square container with a 6.5g lip balm ball inside.
- Twist lock cap.



### Cube Lip Balm

LL2017

- Nourishing lip balm with soothing vanilla to moisturise dry lips.
- Square container with a 6.5g lip balm ball inside.
- Twist lock cap.



### Lynx Wheat Fibre Comb

LL3515

- Eco hair comb.
- Perfect for use on all hair types.
- Comfortable to hold handle.
- Made from 50% wheat fibre a renewable and biodegradable material.



### Bamboo Toothbrush

LL0335

- Medium grade, natural bamboo toothbrush.
- Nylon bristles that are durable.



### Refresh Travel Pack

LL0336

- Bamboo toothbrush with wheat fibre comb packed in a handy travel pouch with drawstring closure.





### Pocket Tissues

LL4680

- Pack of 10 - 3 ply tissues in resealable pocket sized pack.
- Tissue size - 195mm x 205mm.



### Pocket First Aid Kit

LL9023

- First aid kit in red nylon. zippered pouch with black zip.



### Spa Bamboo Brush

LL1047

- Spa bamboo hair brush, makes brushing all hair types a breeze.
- Each bristle has a smooth head and gently massages the scalp.



### Yoga Gel Bead Hot & Cold Pack

LL8995

- Reusable gel pack for hot and cold therapy.
- When used in accordance with the supplied instructions it remains viable for up to one hour.
- Contains non-toxic gel beads.



### Polar Hand Sanitiser

LL4675

- 15ml citrus scented spray pump hand sanitiser.
- Compact, hand bag friendly, with trigger protector which stops spills.
- 62% alcohol content.



### Aqua Wet Wipes

LL4659

- 20 x anti bacterial, wet hand wipes.
- Contains ethyl alcohol.
- Citrus scented in compact pouch.





**H2O Wet Wipes**  
LL3027

- 10 x citrus scented anti bacterial hand wipes.
- Alcohol free.
- Packed in pouch with resealable sticker.



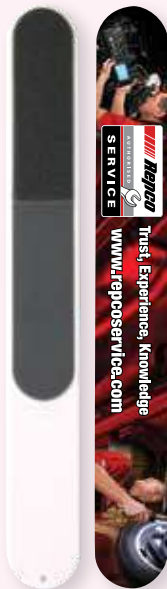
**Lancer Liquid Hand Sanitiser Stick**  
LL4651

- 10ml capacity hand sanitiser in pump action spray bottle with handy pocket clip and cap.
- 62% alcohol content.
- Clear ingredient label on each bottle.



**Lip Balm Stick 4.5g**  
LL2015

- Vanilla flavoured lip balm in twist out dispenser tube.



**New Vogue Nail File**  
LL2006

- Hard case nail file packed in pouch.



**Pamper Bamboo Emery Board**  
LL4838

- Bamboo nail file perfect for keeping nails shaped and smooth.



**Fresh Gel Hand Sanitiser**  
LL727

- 35ml alcohol based citrus fragrance hand sanitiser.
- In clear squeeze bottle with white lid.
- 60% alcohol content.





### Splash Gel Hand Sanitiser

LL726

- 60ml alcohol based, clear gel hand sanitiser with moisturiser.
- Packed in clear plastic squeeze bottle.
- 60% alcohol content.



### Breezy Gel Hand Sanitiser

LL4673

- 30ml alcohol based clear gel.
- Includes moisturiser and vitamin E in white plastic squeeze bottle.
- 62% alcohol content.



### Stitch-In-Time Sewing Kit

LL857

- Travel size sewing kit in convenient folding case.
- Includes six cotton threads, three safety pins, two buttons, two studs, needle, threader and needle.



### Compact Pop Up Brush / Mirror Set

LL1634

- Compact case opens to reveal black pop out brush one side and shatter resistant mirror other side.



### Reflections Round Folding Mirror

LL683

- Compact mirror with flip lid that converts to a stand.
- Handy travel size.
- Perfect to slip into your pocket or handbag.



### Deluxe Face Mask

LL8894

- Premium 3 layer washable cotton face mask.
- 3 black layers of cotton and for an extra comfortable fit two elastic ear straps.







**3  
PACK**

**Deluxe Face Mask 3 Pack**  
LL8896

- Premium 3 layer washable cotton face mask.
- 3 black layers of cotton and for an extra comfortable fit two elastic ear straps.



**5  
PACK**

**Deluxe Face Mask 5 Pack**  
LL8897

- Premium 3 layer washable cotton face mask.
- 3 Black layers of cotton and for an extra comfortable fit two elastic ear straps.



**Shield Cotton Face Mask**  
LL8892

- Sublimated polyester, cotton and spandex face mask.
- Washable and reusable.
- 3 layers of soft comfortable fabric.



**3  
PACK**

**Shield Cotton Face Mask 3 Pack**  
LL6052

- Sublimated polyester, cotton and spandex face mask.
- Washable and reusable.
- 3 layers of soft comfortable fabric.



**5  
PACK**

**Shield Cotton Face Mask 5 Pack**  
LL6022

- Sublimated polyester, cotton and spandex face mask.
- Washable and reusable.
- 3 layers of soft comfortable fabric.



**Deluxe Children's Face Mask**  
LL8863

- Premium children's face mask that's washable and reusable time and again.
- Sized for children 8-12 years.
- Each mask features 3 layers of cotton.





**4  
PACK**

**Deluxe Children's Face Mask  
4 Pack  
LL8956**

- Premium 3 layer washable cotton children's face mask.
- Sized for children 8-12 years.



**Deluxe Adult Face Mask  
LN8894**

- Premium cotton face mask that's washable and reusable time and again.
- Each mask features 3 black layers of cotton.



**Shield Cotton Face Mask  
LN8890**

- Washable non-medical face mask, 2 layers of 95% cotton and 5% spandex with outer layer of polyester.



**Deluxe Children's Face Mask  
LN8863**

- Premium 3 layers, 2 of cotton & 1 outer layer of polyester washable face mask.



**Shield Face Mask  
with Hand Sanitiser Pack  
LL6025**

- Pack containing shield cotton face mask with hand sanitiser in a poly bag.





**Children's Face Mask  
with Hand Sanitiser Pack**  
LL6031

- Pack containing hand sanitiser and children's deluxe face mask.



**Deluxe Face Mask  
with Hand Sanitiser Pack**  
LL6023

- Pack containing deluxe cotton face mask with hand sanitiser in a poly bag.



**Daydream Travel Pack**  
LL6029

- Travel pack including cotton face mask, gel hand sanitiser, wet wipes in zippered polyester case.



**Wellness Pack**  
LL6013

- Lip balm and gel pack in clear cello bag.
- Includes printed cardboard header on top of bag.



# Novelties





**Zippy Wooden Yo-Yo**

LL2885

- Natural cherry wood Yo-Yo with string.



**Zippy Yo-Yo**

LL6201

- Bright coloured polypropylene Yo-Yo with string.
- Available in a great range of colours.



**Rainbow Spring Thingz**

LL429

- Flexible novelty spring thing.
- Great for performing tricks.



**Crazy Bouncing Putty**

LL3079

- 50g of assorted colour putty in opaque 2 piece tub.
- 5 great fluoro colours - pink, yellow, green, blue and orange.



**Bubbles in Bottles**

LL653

- Bubbles in bottles holds 120ml liquid & includes a bubble wand.
- Assorted yellow, pink, green and blue bottles.



**Aluminium Offset Print Badge**

LN0072

- Aluminium epoxy domed printed badge with butterfly fitting.
- Full digital decoration.





**Die Struck Soft Enamel Badge**  
LN0073

- Die struck soft enamel filled badge with butterfly fitting.
- Enamel filled up to 4 colours.



**Button Badge**  
LN0070

- Steel button badge with safety pin and plastic base.
- Printed in full colour.



**Epic Fidget Spinner**  
LL9998

- Promotional fidget spinner designed to improve focus and alleviate boredom.



**Sketch Pavement Chalk**  
LL8909

- 6 piece set of large sized chalk sticks.
- Suitable for pavement or blackboards.
- Non toxic and dustless.



**Happy Klapper**  
LL134

- Hand shaped klapper.
- Inner hand and handle one colour with contrasting colour outer hands.



**Mystify Tile Puzzle**  
LL808

- Square shaped sliding puzzle with 15 moveable tiles.





**Ace Hacky Sacks**  
LL3015

- PVC hacky sack multi colour juggling balls.
- Filled with plastic granules with sewn PVC cover.



**Quack PVC Bath Duck**  
LL012

- The original PVC bath duck with squeaker.



**Quack PVC Bath Duck**  
LN012

- Colour: Custom.
- MOQ: 5000 units.



**Graduate PVC Bath Duck**  
LN1034

- Rubber (PVC) bath duck with mortar board, scroll and squeaker.
- Can be moulded in standard duck yellow or nominate a Pantone colour.



**Doctor Quack PVC Bath Duck**  
LN1037

- Rubber (PVC) bath duck in doctors uniform with squeaker.
- Can be moulded in standard duck yellow or nominate a Pantone colour.



**Silicone Wrist Bands**  
LN0065

- Custom colour silicone wrist bands with diverse range of decoration options.
- Available in 3 sizes.





**World's Smallest Pig Eco Coin Bank**  
LL3600

- Coin bank with removable coin release bung at base.
- Made from a 50/50 blend of wheat fibre and polypropylene.



**World's Smallest Pig Coin Bank**  
LL3598

- Polystyrene pig coin bank.
- Removable coin release bung at base.



**Patrick Pig Coin Bank Blue**  
**Priscilla Pig Coin Bank Pink**  
LL240

- Flexible PVC pig coin bank.
- Screw off nose cone for coin release.



**Micro Piglet Coin Bank**  
LL2408

- Flexible PVC pig coin bank.
- Removable nose cone for coin release.



**Custom Colour / Design Coin Bank**  
LN246

- All colours of existing models can be changed.
- Custom designs available.
- MOQ: 3,000 units up.



**Australian Football Stress Reliever**  
LL645

- Football stress reliever.







### Apple Stress Reliever

LL499

- Apple stress reliever.



### Brain Stress Reliever

LL112

- Stress brain with textured surface.
- Squeeze to gain focus and unleash your inner genius.



### Emoji Stress Balls

LL610

- Round stress ball with choice of Heart, Smile or Cool emoji faces.



### Hard Hat Stress Reliever

LL773

- Hard hat stress reliever.



### Heart Stress Reliever

LL707

- Heart shaped stress reliever.



### Horse Stress Reliever

LL6831

- Horse shaped stress reliever.





**House Stress Reliever**  
LL297

- House shaped stress reliever.



**Plane Stress Reliever**  
LL747

- Plane shaped stress reliever.



**Soccer Ball Stress Reliever**  
LL785

- Soccer ball shaped stress reliever.



**Round Stress Balls**  
LL600

- The original stress reliever ball.



**Smiley Phone Chair Stress Reliever**  
LL7948

- Smiley guy phone stress chair.
- Phone can sit in landscape or portrait positions.



**Star Stress Reliever**  
LL917

- Star shaped stress reliever.





**Transit Van Stress Reliever**

LL350

- Van shaped stress reliever.



**Water Drop Stress Reliever**

LL617

- Water drop shaped stress reliever.



**World Globe Stress Reliever  
2 Colour**

LL630

- World shaped stress reliever.



**Chase Recycled Playing Cards**

LLO030

- Set of playing cards made from recycled cardboard.
- Each deck is 54 cards (including jokers).
- Your design printed on the box.



**Snap Playing Cards**

LN0026

- Custom printed 300gsm playing cards with matching printed box.
- Each deck is 54 cards (including jokers).



**Bongo Inflatable Bang Bang Sticks**

LN6110

- Set of 2 inflatable white polyethylene sealed tubes.





**Dog Tag with Neck Chain**  
LN40

- Epoxy domed aluminium dog tag.
- Includes 76cm silver neck ball chain.



**Dog Tag with Key Chain**  
LN38

- Epoxy domed aluminium dog tag.
- Includes 12cm silver ball chain keytag fitting.



**Grow Credit Card Magnifier**  
LN709

- Convenient wallet size magnifier with white frame.



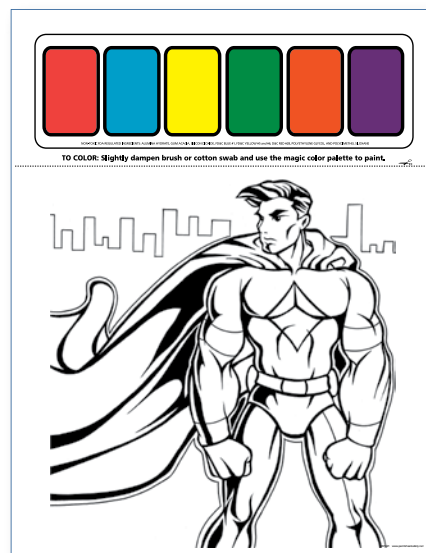
**Amaze Tile Ruler Puzzle**  
LL891

- Rectangular sliding tile puzzle ruler.
- 15cm-6 inch ruler calibrations on outside edges.



**Focus Bookmark Magnifier Ruler**  
LL678

- 13cm (5") ruler & magnifying lens with white frame.
- 3 x magnification.



**Picasso Paint Sheets**  
LN9026

- Your custom design on a paint sheet including 6 paint palette tiles that come alive with water.



# Tattoos



**Classic Temporary Tattoos®**  
LN3838

- Paper transfer based tattoos.
- Not suitable for children under 4 years.
- Size: 38mm x 38mm (LxW).



**Classic Temporary Tattoos®**  
LN3857

- Paper transfer based tattoos.
- Not suitable for children under 4 years.
- Size: 38mm x 57mm (LxW).



**Classic Temporary Tattoos®**  
LN5050

- Paper transfer based tattoos.
- Not suitable for children under 4 years.
- Size: 50mm x 50mm (LxW).



**Classic Temporary Tattoos®**  
LN5778

- Paper transfer based tattoos.
- Not suitable for children under 4 years.
- Size: 57mm x 78mm (LxW).



**Classic Temporary Tattoos®**  
LN78102

- Paper transfer based tattoos.
- Not suitable for children under 4 years.
- Size: 78mm x 102mm (LxW).



**Classic Temporary Tattoos®**  
LN15238

- Paper transfer based tattoos.
- Not suitable for children under 4 years.
- Size: 152mm x 38mm (LxW).





**Hi Bounce Ball**  
LL3014

- All-purpose hollow rubber hi bounce ball.
- Suitable for games, handball, catching, throwing, bouncing and an exercise ball.



**Hi Bounce Tennis Ball**  
LL3011

- Hollow high bounce tennis ball with gloss finish.
- Suitable for games, handball, catching, throwing, bouncing and an exercise ball.



**Hi Bounce Soccer Ball**  
LL3012

- Hollow high bounce soccer ball with gloss finish.
- Suitable for games, handball, catching, throwing, bouncing and an exercise ball.



**Frosty Plush Teddy Bear**  
LL40883

- 160mmH plush white sitting teddy bear.
- Embroidered eyes and brown nose.
- Optional printed velcro polyester T-shirt available in white, red or blue.



**Honey Plush Teddy Bear**  
LN30193

- 180mmH plush sitting teddy bear with embroidery on stomach patch.



**Honey Plush Teddy Bear**  
LL30193

- 180mmH sitting bear with bead eyes, black nose, and brown patches on paws.
- Optional printed velcro polyester T-shirt available in blue, red or white.





**Coco Plush Teddy Bear**

LL88120

- 260mmH plush sitting bear.
- Optional printed velcro polyester T-shirt available in blue, red, black or white.



**Coconut Plush Teddy Bear**

LL88125

- 260mmH plush sitting bear.
- Optional printed velcro polyester T-shirt available in blue, red, black or white.



**Korporate Koala**

LL88306

- 280mmH grey and white sitting koala with black eyes and nose.
- Optional printed velcro polyester T-shirt available in blue, red, black or white.



**The Original Signature Calico Bear**

LL5759

- 270mmH sitting calico signature/autograph bear.
- Optional printed velcro polyester T-shirt available in blue, red, black or white.





Bags



Confectionery



Drinkware



Health



Office



Home



Lifestyle



Novelties



Packs



Technology



[www.logoline.com.au](http://www.logoline.com.au)