

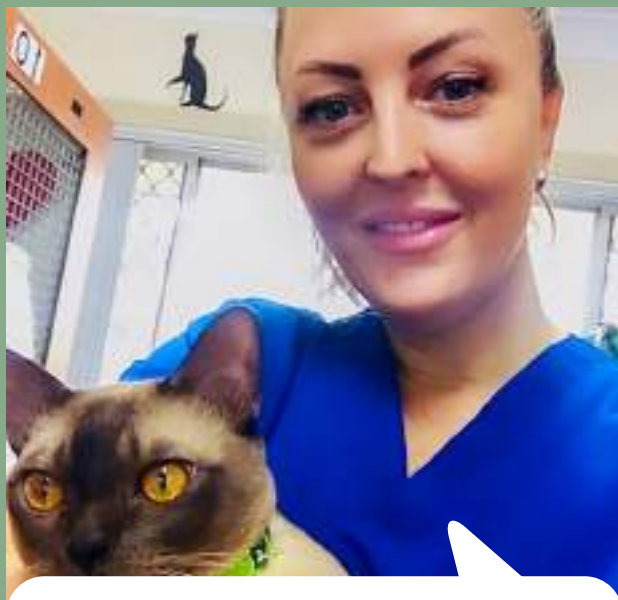


bizcare

ISSUE 4 . 2022 / 2023

# STORIES FROM THE BIZ CARE COMMUNITY

Read what Care professionals around Australia and New Zealand have to say about their Biz Care uniform.



**Hannah Jayne**  
Veterinary Nurse

As a busy vet nurse, having scrubs that fit, look good and are comfortable is hard to find. But my Biz Care scrubs are exactly that.

Plus they don't collect animal hair throughout the day, making laundry day a breeze.

Thanks Biz Care!



**Nurse Molly**  
[@nursemollyphoebe](#)

I love Biz Care products and scrubs, I always feel neat and tidy at work and know that they can go through anything the ward throws at me and will still look amazing after a good wash!



**SASH**  
Small Animal Specialist Hospital

It's never a boring day working in Australia's largest specialist and 24/7 emergency veterinary hospital. Thank goodness for scrubs - they are so easy to wear. They are lightweight, comfortable, durable, and look professional - exactly what we need when handling animals and seeing clients. Highly recommended.



**Elms Court Village**  
*Retirement Village*

With our Biz Care uniforms, we can be sure that our team always looks professional while caring for our residents. These uniforms offer everything we need - they are high quality, comfortable and easy to maintain.



**K9HQ**  
*Veterinarian Services*

We love our Biz Care scrubs - the animal hair does not stick to it, lots of pockets, washes well and dries so quickly - and comfortable!



**Nurse Hannah**  
*@thatnursehannah*

Biz Care have got me covered when it comes to comfort and style.

I live in my grape Riley scrubs- the vibrant colour cheers my patients up. I also love my navy Averys - they honestly feel like I'm wearing silky soft pajamas.



# HOW TO BUILD YOUR TEAMS NEW LOOK

First impressions count, especially when your business is service based. A good-looking uniform not only elevates your brand amongst your competitors but also fosters increased morale and productivity among your staff.

Our catalogue is designed to make building your team's new uniform easy in 4 simple steps.

BEFORE



1

### IDENTIFY DEPARTMENTS AND/OR JOB ROLES REQUIRING UNIFORM

Colour-coding apparel for different departments can be helpful markers for your clientele. Refer to pages 6 - 21 for a snapshot of team dressing by colour story.

2

### PICK STYLES AND FABRICS BASED ON JOB ROLES AND FUNCTIONS

Our entire range is designed to cater for both functional and non-functional roles. Available in a range of fabrics and styles to suit all budgets, body shapes and climates.

3

### ALLOCATE ENOUGH PIECES FOR EACH OF YOUR TEAM

Providing the right allocation ensures staff have enough pieces to last them through their working week and increases the longevity of garments.

4

### READY TO ORDER?

Get in touch with our uniform specialists who can review your requirements and suggest the perfect uniform solution for your team. Find your local Biz Care stockist at [www.biz-care.com](http://www.biz-care.com)

AFTER



# A STEP IN THE RIGHT DIRECTION

We're committed to designing and manufacturing ethical and sustainable healthcare attire. At the core of our business is a long-standing commitment to ethical trading. We believe that businesses can be both profitable and responsible.

At Biz Care, we like to think of ourselves as masters of the tiniest details. From sourcing fabrics, to ensuring all our health wear designs are rigorously tested in dedicated laboratories and trialled on real workers to make sure we get the fit and functionality just right.

Biz Care garments have been designed to easily coordinate with the Biz Collection range to ensure everything works perfectly together providing a complete uniform solution.



## INNOVATIVE QUALITY IS AT THE HEART OF ALL WE DO

Our experienced team of designers, researchers and technicians are dedicated to sourcing innovative fabrics and processes. Before we release any new product, we perform rigorous testing and evaluation, both in-house and in the workplace. Our garments are fitted on real people, not mannequins, and we conduct wear trials with customers in the field to guarantee they're fit for purpose, comfort and durability.



## MORE CHOICES FOR EVERY BODY

We're the first to recognise that one size doesn't fit all, that's why we offer a vast range of styles, sizes and fabrics to suit all body shapes, industries and functional needs. We've created products that can be mixed and matched, catering for different work streams, job roles and also allowing each wearer to feel comfortable in their workwear.



## DELIVERING ON OUR PROMISE OF CARE

With a team of local staff in most states and at the ready to take your call, customer service is a natural extension of everything we do. Our library of fit ranges in some states is available to help you effortlessly conduct fittings and borrow samples easily and efficiently.

Because we hold stock in multiple warehouses across Australia and New Zealand, we can ensure your orders are processed, picked and dispatched quickly and efficiently.



## WE BELIEVE IN CORPORATE SOCIAL RESPONSIBILITY

We're proud of our parent company Fashion Biz's commitment to sourcing products and services in an ethically responsible manner. We consider the welfare of workers, health and safety and potential environmental impacts.

Our Ethical Sourcing Policy is primarily based on conducting business ethically, manufacturing responsibly and demonstrating environmental consciousness. We choose our partners carefully, with factories across India, China and Bangladesh which must adhere to international manufacturing standards, these may include:



Ethical Trade Initiative  
Base Code (ETI)



Supplier Ethical Data Exchange  
(Sedex) ETI/SMETA



Ethically Correct Certified  
Company SA 8000



Worldwide Responsible Accredited  
Production (WRAP)



Business Social Compliance  
Initiative (BSCI)



Textile Exchange's Global Recycled  
Standard (GRS)



Quality  
Approved  
ISO 9001

ISO 9001 Certification



Fashion Biz Ethical Sourcing Policy

We're making it a priority to change our product life cycle for the better. That means growing a better future for both our customers and the planet.

06 . TEAM DRESSING

22 . SHIRTS, T-TOPS & POLOS

34 . FUNCTIONAL LOWERS

42 . CARE SCRUBS

60 . LAB COATS

64 . ACCESSORIES

70 . HEALTH & BEAUTY

72 . KNITWEAR & OUTERWEAR

78 . SIZE GUIDE







# PURPLE

Modern and eye-catching, our purple adds richness and depth to your wardrobe without being overly vivid.

Try pairing with navy, charcoal, black or white.

## **FEATURED - LEFT TO RIGHT**

1. **CS950LS** Daisy Print Florence Tunic  
**CL040LL** Jane 3/4 Pant
2. **CS947LS** Florence Shirt **CL956LS** Cargo Skirt
3. **CST043MS** Riley Scrub Top  
**CSP047ML** Riley Straight Leg Scrub Pant
4. **CST043LS** Riley Scrub Top  
**CSP047LL** Riley Straight Leg Scrub Pant
5. **CS952LS** Marley T-Top **CL955LL** Straight Leg Pant
6. **CS949LS** Florence Tunic **CL953LL** Slim Leg Pant





## NAVY

Navy is a staple colour in any health wardrobe. Best worn with black or navy lowers.

### FEATURED - LEFT TO RIGHT

1. **S770MS** Monaco Shirt **CL959ML** Cargo Pant
2. **CST243LS** Rose Scrub Top **NEW**  
**CSP244LL** Rose Maternity Scrub Pant **NEW**
3. **CS949LS** Florence Tunic **CL956LS** Cargo Skirt
4. **CS949LS** Florence Tunic **CL955LL** Straight Leg Pant
5. **CST043MS** Riley Scrub Top  
**CSP042ML** Riley Jogger Scrub Pant
6. **CST043LS** Riley Stretch Scrub Top  
**CSP042LL** Riley Jogger Scrub Pant
7. **CST141MS** Tokyo Scrub Top  
**CSP143ML** Tokyo Scrub Pant
8. **CST141LS** Tokyo Scrub Top  
**CSP143LL** Tokyo Scrub Pant
9. **CST240LS** Parks Scrub Top **NEW**  
**CT247LL** Performance Tee **NEW**  
**CSP042LL** Riley Jogger Scrub Pant **CH248L** Hijab **NEW**









# TEAL

Teal matches well with navy, black or charcoal in both lowers and outerwear.

## **FEATURED - LEFT TO RIGHT**

1. **SH3603** Oasis Shirt **CL958ML** Flat Front Pant
2. **CK962LC** Zip Knit **CS948LS** Daisy Print Florence Shirt  
**CL954LL** Cargo Pant
3. **CS950LS** Daisy Print Florence Tunic  
**CL953LL** Slim Leg Pant
4. **P400LS** Crew Polo **CL956LS** Cargo Skirt
5. **CS952LS** Marley T-Top **CL041LL** Jane Pant
6. **CST945MS** Avery V-Neck Scrub Top  
**CSP946ML** Avery Scrub Pant





## MID BLUE

Match with black, navy or charcoal lowers and outerwear.

For depth, add a secondary colour palette of white, electric blue or navy.

### **FEATURED - LEFT TO RIGHT**

1. **SH3603** Oasis Shirt **CL959ML** Cargo Pant
2. **CS951LT** Florence 3/4 Shirt **CK045LC** Cardigan  
**CL956LS** Cargo Skirt
3. **CS947LS** Florence Shirt, **CL040LL** Jane 3/4 Pant
4. **H10622** Classic Biz Scrub Top  
**CT247LL** Performance Tee **NEW**  
**H10620** Classic Biz Scrub Bootleg Pant  
**CH248L** Hijab **NEW**
5. **H10612** Classic Biz Scrub Top  
**H10610** Classic Biz Scrub Cargo Pant
6. **CS952LS** Marley T-Top **CL041LL** Jane Pant
7. **CS949LS** Florence Tunic









# CHARCOAL

A colour that will go with everything in your wardrobe and complement any skin tone.

Add depth to charcoal with contrasting colours of blue, purple or white.

## **FEATURED - LEFT TO RIGHT**

1. **CS947LS** Florence Shirt **CL956LS** Cargo Skirt
2. **CS952LS** Marley T-Top **CL953LL** Slim Leg Pant
3. **P400LS** Crew Polo, **CL953LL** Slim Leg Pant
4. **CST945MS** Avery V-Neck Scrub Top  
**CSP946ML** Avery Scrub Pant
5. **CST941LS** Avery V-Neck Scrub Top  
**CSP944LL** Avery Straight Leg Scrub Pant
6. **CST141MS** Tokyo Scrub Top  
**CSP143ML** Tokyo Scrub Pant
7. **CST141LS** Tokyo Scrub Top  
**CSP143LL** Tokyo Scrub Pant
8. **CC144LC** Hope Cropped Lab Coat  
**CS952LS** Marley T-Top **CL954LL** Cargo Pant



# ELECTRIC BLUE

Give your wardrobe a recharge with electric blue. Pair with navy, charcoal or black lowers and outerwear for a striking look.

## FEATURED - LEFT TO RIGHT

1. **CS952LS** Marley T-Top **CL956LS** Cargo Skirt
2. **CS949LS** Florence Tunic **CL953LL** Slim Leg Pant
3. **CK961LV** Knit Vest **CS947LS** Florence Shirt  
**CL953LL** Slim Leg Pant
4. **CST942LS** Avery Round Neck Scrub Top  
**CSP944LL** Avery Straight Leg Scrub Pant
5. **CST945MS** Avery V-Neck Scrub Top  
**CT247ML** Performance Tee **NEW**  
**CSP946ML** Avery Scrub Pant
6. **CST141MS** Tokyo Scrub Top  
**CSP143ML** Tokyo Scrub Pant
7. **CST043LS** Riley Scrub Top  
**CSP042LL** Riley Jogger Scrub Pant
8. **CST043MS** Riley Scrub Top  
**CSP042ML** Riley Jogger Scrub Pant









# CHERRY

Match with black or navy lowers and outerwear.

For depth, add a secondary colour palette of white, blue or black.

## **FEATURED - LEFT TO RIGHT**

1. **P400LS** Crew Polo, **CL957LS** Cargo Short
2. **P400MS** Crew Polo, **CL960MS** Cargo Short
3. **CS949LS** Florence Tunic, **CL954LL** Cargo Pant
4. **CS951LT** Florence Shirt, **CL953LL** Slim Leg Pant
5. **CS947LS** Florence Shirt, **CL955LL** Straight Leg Pant
6. **CS952LS** Marley T-Top





# BLACK

Black is a staple in any working wardrobe.

Biz Care blacks have been tested to ensure that colorfastness is the least of your worries.

## **FEATURED - LEFT TO RIGHT**

1. **CST942LS** Avery Round Neck Scrub Top  
**CSP943LL** Avery Slim Leg Scrub Pant
2. **CST043LS** Riley Scrub Top  
**CSP042LL** Riley Jogger Scrub Pant
3. **CS952LS** Marley T-Top **CL956LS** Cargo Skirt
4. **P400MS** Crew Polo **CL959ML** Cargo Pant
5. **CS949LS** Florence Tunic **CL041LL** Jane Pant
6. **CST243LS** Rose Scrub Top **NEW**  
**CSP042LL** Riley Jogger Scrub Pant



# FLORENCE STRETCH TOPS



LIGHT  
WEIGHT

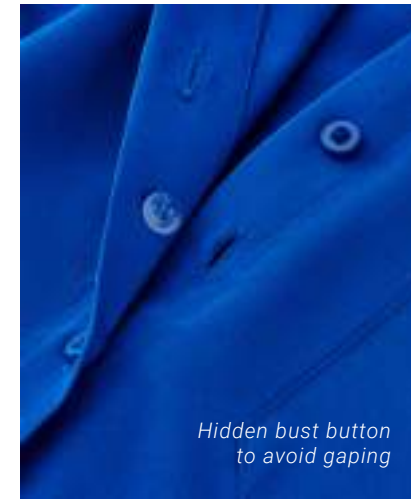
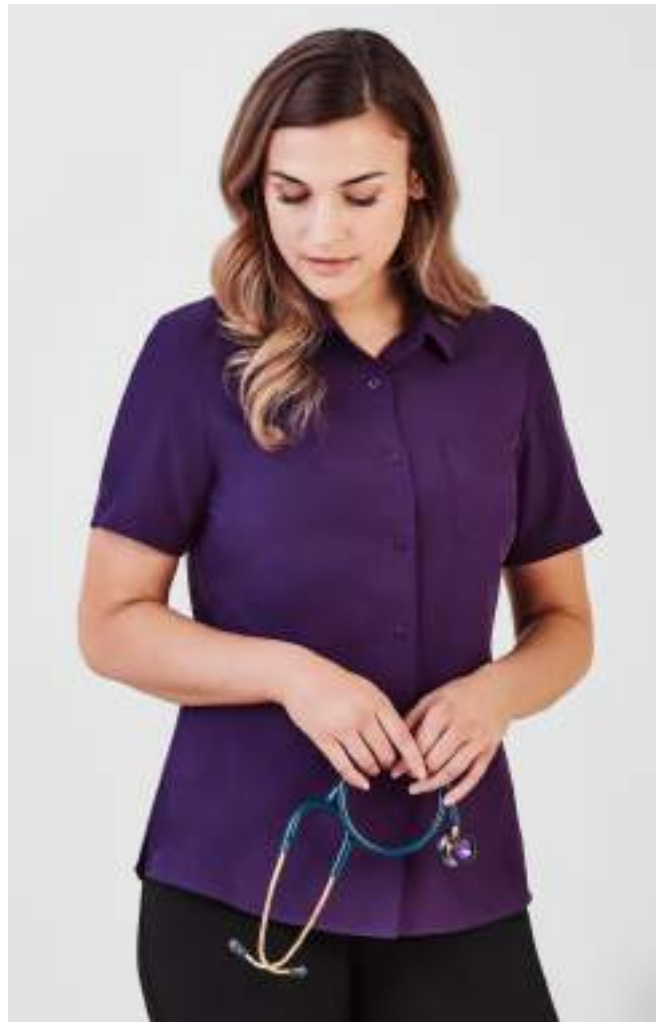


EASY  
STRETCH



BREATHABLE





- NAVY
- ELECTRIC BLUE
- MID BLUE
- TEAL
- CHERRY
- CHARCOAL
- BLACK
- PURPLE

A perfect blend of style, comfort and function. The easy-care fabric is breathable, soft and lightweight; perfect for all climates. Styles feature longer hem lengths, hidden bust button (short sleeve and ¾ sleeve styles), side splits and pockets.

**FABRIC COMPOSITION**  
**CARE INSTRUCTIONS**

94% Polyester 6% Elastane  
Gentle machine wash. Wash inside out with similar colours.  
Do not bleach, soak or tumble dry. Line dry in shade.



**CS947LS**  
Womens  
S/S Shirt  
4 - 30



**CS949LS**  
Womens  
Tunic  
4 - 30



**CS951LT**  
Womens  
3/4 Shirt  
4 - 30

# FLORENCE DAISY PRINT STRETCH TOPS



LIGHT  
WEIGHT



EASY  
STRETCH



BREATHABLE







A perfect blend of style, comfort and function. The easy-care fabric is breathable, soft and lightweight; perfect for all climates. Styles feature longer hem lengths, hidden bust button on short sleeve style, side splits and pockets.

**FABRIC COMPOSITION**  
**CARE INSTRUCTIONS**

94% Polyester 6% Elastane  
Gentle machine wash. Wash inside out with similar colours.  
Do not bleach, soak or tumble dry. Line dry in shade.



**CS948LS**  
Womens Daisy  
Print S/S Shirt  
4 - 30



**CS950LS**  
Womens Daisy  
Print Tunic  
4 - 30

# MARLEY JERSEY T-TOPS



LIGHT  
WEIGHT



EASY  
STRETCH



BREATHABLE





- NAVY
- ELECTRIC BLUE
- MID BLUE
- TEAL
- CHERRY
- CHARCOAL
- BLACK
- PURPLE

Our easy-care Jersey T-Top is an essential piece in any working wardrobe. The lightweight soft knit provides stretch and comfort without clinging to the body. Designed to complement all silhouettes.

**FABRIC COMPOSITION**  
**CARE INSTRUCTIONS**

95% Polyester 5% Elastane

Warm gentle machine wash. Wash with similar colours. Do not bleach, soak or tumble dry. Line dry in shade. Little to no pressing required.



CS952LS  
Womens  
S/S T-Top  
XXS - 4XL



BIZ COLLECTION

# OASIS SHIRTS



LIGHT WEIGHT



WRINKLE RESISTANT



Biz Collection Oasis is ideal for demanding work environments. It's soft, durable and requires little to no ironing. Made from yarn-wicked breathable polyester, providing the same cool and dry features of linen.

**FABRIC COMPOSITION**  
**CARE INSTRUCTIONS**

BIZ COMFORTCOOL™ 100% Polyester  
Cold gentle machine wash. Do not bleach, soak or tumble dry. Line dry in shade.



**LB3601**  
Womens  
S/S Shirt  
6 - 26



**S265LS\***  
Womens  
Overblouse  
6 - 30



**LB3600**  
Womens  
3/4 Shirt  
6 - 26



**SH3603**  
Mens  
S/S Shirt  
S - 3XL, 5XL

\*Limited colours available. See the full range of styles and colours available in the Biz Collection catalogue.

BIZ COLLECTION

# MONACO SHIRTS



BREATHABLE



EASY STRETCH



INK

ELECTRIC BLUE

PLATINUM

BLACK

WHITE

Get that pristine look with this stretch cotton-rich fabric alternative. The Biz Collection Monaco is a functional and comfortable shirt range for demanding healthcare environments.

**FABRIC COMPOSITION**  
**CARE INSTRUCTIONS**

68% Cotton 28% Polyester 4% Elastane  
Cold gentle machine wash. Do not bleach, soak or tumble dry. Line dry in shade.



**S770LS**  
Womens  
S/S Shirt  
6 - 26



**S770LT**  
Womens  
3/4 Shirt  
6 - 26



**S770MS**  
Mens  
S/S Shirt  
XS - 5XL

See the full range of styles and colours available in the Biz Collection catalogue.

BIZ COLLECTION

# CREW POLOS



LIGHT  
WEIGHT



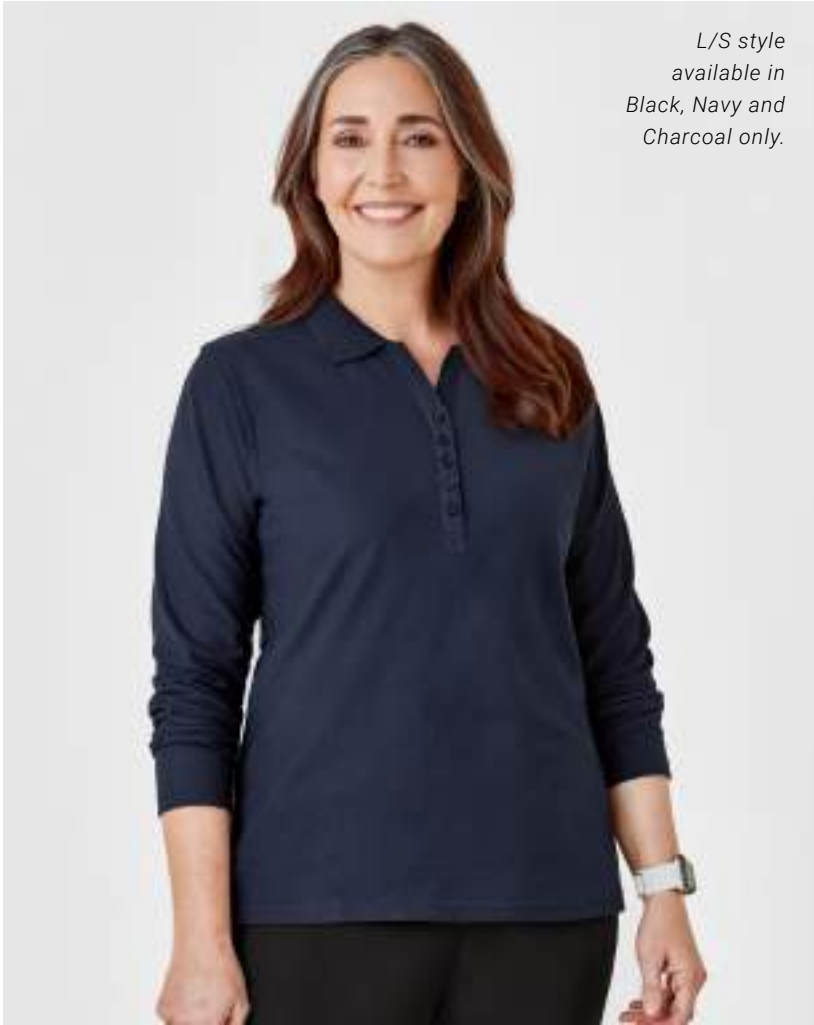
EASY  
IRON







*L/S style available in Black, Navy and Charcoal only.*



*L/S style available in Black, Navy and Charcoal only.*



The Biz Collection Crew Polo is easy-care and perfect for all healthcare professionals.

**FABRIC COMPOSITION**  
**CARE INSTRUCTIONS**

65% Polyester 35% Cotton Pique  
Machine washable. Line dry in shade.  
Do not bleach, soak or tumble dry.  
Do not dry clean.



**P400LS\***  
Womens  
S/S Polo  
8 - 24



**P400LL\***  
Womens  
L/S Polo  
8 - 24



**P400MS**  
Mens  
S/S Polo  
S - 3XL, 5XL



**P400ML\***  
Mens  
L/S Polo  
S - 3XL, 5XL

\*Limited colours available. See the full range of styles and colours available in the Biz Collection catalogue.

NEW

# PERFORMANCE TEE



LIGHT  
WEIGHT



EASY  
STRETCH



BREATHABLE



ANTI  
BACTERIAL





MIDNIGHT NAVY

BLACK

WHITE

The perfect tee that can be worn as an underscrub or on its own. Made from soft cotton treated with Silverplus® antibacterial protection. Added stretch allows for extra movement and comfort. Designed to sit closer to the body.

**FABRIC COMPOSITION**  
**CARE INSTRUCTIONS**

95% Cotton 5% Elastane with antibacterial and odour protection.  
Machine wash cold, inside out with like colours on gentle cycle.  
Dry in shade, cool iron if required.



**CT247LL**  
Womens  
Cotton L/S Tee  
XS - 3XL



**CT247ML**  
Mens  
Cotton L/S Tee  
XS - 5XL



# BIZ CARE FUNCTIONAL LOWERS

Designed and developed for Care professionals, the Biz Care Functional Lowers range is comfortable, breathable and durable.



BREATHABLE



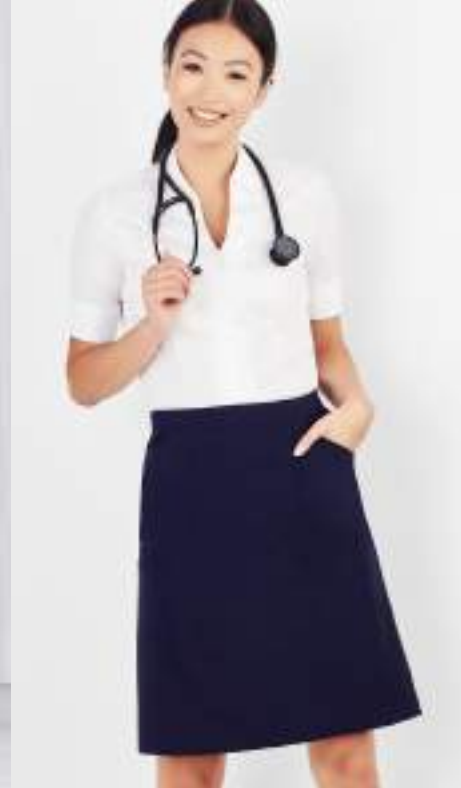
EASY  
STRETCH



LIGHT  
WEIGHT



CLEVER  
STORAGE





Biz Care Functional Lowers are designed, developed, fitted and tested in Australia and New Zealand by real care professionals to ensure our range is comfortable, stylish and fit for purpose.

#### FUNCTIONAL LOWERS FEATURE:

- Multiple functional and durable pockets.
- Pockets made from self-fabric to withstand sharp tools, and bar tacked to prevent pocket corners ripping.
- Streamlined pockets provide a clean and tailored appearance, and are less like industrial workwear pockets (cargo pant only).
- Roll-up pant leg option provide the flexibility of a 3/4 leg length (cargo pant only).
- Durable, hard-wearing soft fabric with added stretch for comfort and movement.
- Comfort stretch waistband that moves with you.



CL953LL Womens Comfort Waist Slim Leg Pant



CL955LL Womens Comfort Waist Straight Leg Pant



CL954LL Womens Comfort Waist Cargo Pant

# WOMENS COMFORT LOWERS

Breathable, durable, and easy-care fabric. Made from a lightweight plain weave with added stretch for comfort. Comfort lower pants, shorts and skirt have a built in comfort stretch waist band, making it perfect for all functional and admin roles.

## FABRIC COMPOSITION CARE INSTRUCTIONS

64% Polyester 34% Viscose 2% Elastane  
Warm gentle machine wash 40°. Wash inside out with similar colours.  
Do not bleach, soak or tumble dry. Line dry in shade.  
Cool iron if required.





CL956LS Womens Comfort Waist Cargo Skirt



CL957LS Womens Comfort Waist Cargo Short



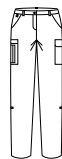
CL145LS Womens Comfort Skort



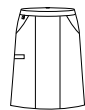
CL953LL  
Womens  
Slim Leg Pant  
4 - 20



CL955LL  
Womens  
Straight Leg Pant  
8 - 30



CL954LL  
Womens  
Cargo Pant  
4 - 30



CL956LS  
Womens  
Cargo Skirt  
4 - 30



CL957LS  
Womens  
Cargo Short  
4 - 26



CL145LS  
Womens  
Skort  
4 - 30  
Available in Navy  
and Black





CL958ML Mens Comfort Waist Flat Front Pant



CL959ML Mens Comfort Waist Cargo Pant



- NAVY
- CHARCOAL
- BLACK

# MENS COMFORT LOWERS

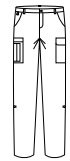
Breathable, durable, and easy-care fabric. Made from a lightweight plain weave with added stretch for comfort. Comfort lower pants and shorts have a built in comfort stretch waist band, making it perfect for all functional and admin roles.

**FABRIC COMPOSITION**  
**CARE INSTRUCTIONS**

64% Polyester 34% Viscose 2% Elastane  
Warm gentle machine wash 40°. Wash inside out with similar colours. Do not bleach, soak or tumble dry. Line dry in shade. Cool iron if required.



**CL958ML**  
Mens Flat Front Pant  
72R - 127R



**CL959ML**  
Mens Cargo Pant  
72R - 127R



**CL960MS**  
Mens Cargo Short  
72R - 127R



# JANE LOWERS

The perfect pull-on stretch pant in a lightweight fabric that is durable and comfortable. Quick drying and suitable for all climates.

Perfect for both functional and office roles.



BREATHABLE



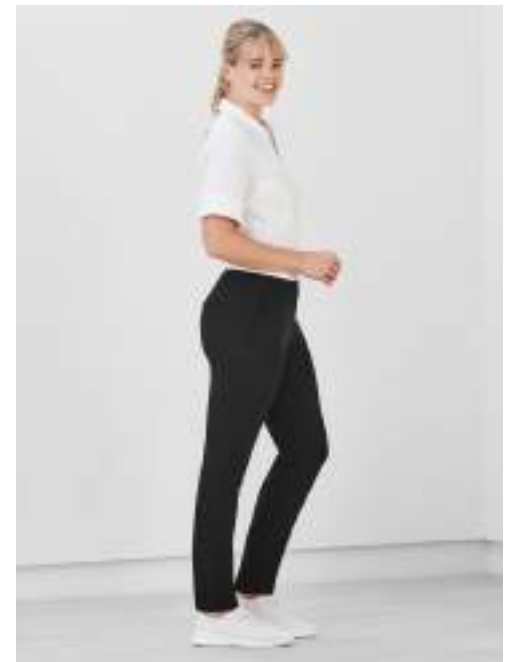
EASY  
STRETCH



LIGHT  
WEIGHT



QUICK  
DRYING





- NAVY
- CHARCOAL
- BLACK

Light weight fabric that is stretchy, durable and comfortable. Wide basque waistband with anti-roll elastic, no zips or buttons, functional back pocket, and two deep front angled pockets with utility loop on right hand side.

**FABRIC COMPOSITION**  
**CARE INSTRUCTIONS**

88% Polyester 12% Elastane  
Warm gentle machine wash 40°. Wash inside out with similar colours. Do not bleach, soak or tumble dry. Line dry in shade. Cool iron if required.



**CL040LL**  
Womens 3/4  
Length Stretch Pant  
4 - 30



**CL041LL**  
Womens  
Stretch Pant  
4 - 30

# OUR SCRUBS RANGE

Our extensive range of scrubs is designed locally together with medical professionals from a diverse range of Care industries. Ensuring there's a range of scrubs perfectly suited for your team and job functions. Each scrub range features our core principles of durable fabrics, comfort, easy-care and fit for purpose styling.



## HARTWELL SCRUBS

Unisex reversible scrubs. Designed to be commercially laundered and available in sizes XXS - 6XL. 65% Polyester 35% Cotton.

**See page 44**



## CLASSIC BIZ SCRUBS™

Biz Collection scrubs. Essential scrub range available in Unisex and Womens styles in a relaxed fit. 65% Polyester 35% Cotton.

**See page 46**



## TOKYO SCRUBS

All-rounder scrubs with added antibacterial and odour protection. Mens and Womens styles in a modern fit. 60% Cotton 40% Polyester.

**See page 48**



## AVERY SCRUBS

Soft, lightweight, wash-and-wear scrubs. Mens and Womens scrubs available in multiple fits and styles. 96% Polyester 4% Elastane.

**See page 50**







### RILEY SCRUBS

Stylish, modern scrubs with antibacterial stretch panels. Mens and Womens scrubs available in multiple fits and styles.

52% Cotton 45% Polyester 3% Elastane.

**See page 52**



### PARKS SCRUBS

Riley fabric with added antibacterial protection. Womens zip front scrub top only. 52% Cotton 45% Polyester 3% Elastane with Silverplus®.

**See page 54**



### ROSE SCRUBS

Riley fabric with added antibacterial protection. Available in scrub pant and tunic scrub top suitable for maternity. 52% Cotton 45% Polyester 3% Elastane with Silverplus®.

**See page 56**



### PRINTED SCRUBS

Add fun to your wardrobe with our soft cotton printed scrubs. Available in two prints in Mens and Womens styling.

97% Cotton 3% Elastane.

**See page 58**



# HARTWELL SCRUBS

Unisex reversible scrubs  
specifically designed for  
commercial laundromats.



BREATHABLE



EASY  
IRON



INDUSTRIAL  
WASHING



UNISEX



REVERSIBLE





*Coloured size pips*



*RFID chip slot*



*Full elastic waist and draw string*



*Angled pockets to reduce lint build up*

**FABRIC COMPOSITION**

65% Polyester  
35% Cotton

**CARE INSTRUCTIONS**

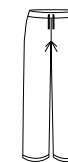
Industrial laundry friendly. Domestic laundry at 60°C or lower. Tumble dry on low or line dry in shade. Warm iron if required.

**FEATURES**

Chest pocket and back pant pocket on both sides of the garment. Colour coded size pips and RFID chip placement suitability. All trims and fabric suitable for most industrial washing processes.



**CST150US**  
Unisex Reversible  
Scrub Top  
XXS - 6XL



**CSP151UL**  
Unisex Reversible  
Scrub Pant  
XXS - 6XL



↪ BIZ COLLECTION

# CLASSIC BIZ SCRUBS™

Biz Collection scrubs are made from high performance, soft touch fabric with mechanical stretch.



BREATHABLE



EASY  
IRON



INDUSTRIAL  
WASHING





**FEATURED**

- 1. **H10622** Scrub Top  
**H10620** Bootleg  
Scrub Pant
- 2. **H10722** Contrast  
Scrub Top
- 3. **H10622** Scrub Top  
**H10620** Bootleg  
Scrub Pant
- 4. **H10612** Scrub Top  
**H10610** Scrub Pant



**FABRIC COMPOSITION**

65% Polyester  
35% Cotton

**CARE INSTRUCTIONS**

Can be laundered at 80°C. Do not soak, tumble dry on low, warm iron if needed. Do not dry clean.

CLASSIC  
SCRUBS

CONTRAST  
SCRUBS



**H10622**  
Womens Classic  
Scrub Top  
XS - 3XL



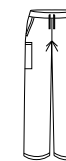
**H10722**  
Womens Contrast  
Crossover Scrub Top  
XS - 4XL



**H10620**  
Womens Classic  
Bootleg Scrub Pant  
XXS - 3XL



**H10612**  
Unisex Classic  
Scrub Top  
XS - 3XL, 5XL



**H10610**  
Unisex Classic  
Scrub Cargo Pant  
XS - 3XL, 5XL



# TOKYO SCRUBS

A scrub range that is perfect for every body, every function, every day. Treated with SILVERPLUS®, an antimicrobial technology that provides body odour control\*.



BREATHABLE



ANTI  
ODOUR



CLEVER  
STORAGE



HOT  
WASH





*ID loop*



*Functional deep pockets*



*Full elastic waist  
and draw string*



*Coloured size pips*

**FABRIC  
COMPOSITION**

60% Cotton  
40% Polyester  
with antibacterial  
treatment.

**CARE INSTRUCTIONS**

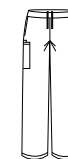
For longevity of  
antibacterial treatment  
we recommend  
domestic laundry at  
60°C or lower. Tumble  
dry on low or line dry in  
shade. Dry cleanable.  
Warm Iron.



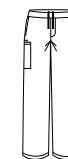
**CST141LS**  
Womens V-Neck  
Scrub Top  
XXS - 3XL, 5XL



**CST141MS**  
Mens V-Neck  
Scrub Top  
XXS - 3XL, 5XL



**CSP143LL**  
Womens  
Scrub Pant  
XXS - 3XL, 5XL



**CSP143ML**  
Mens  
Scrub Pant  
XXS - 3XL, 5XL











*Straight leg  
with pant  
roll up*



# AVERY SCRUBS

Avery scrubs are anything but your typical pair of scrubs! Soft, durable and more comfortable than your favorite pair of pajamas. Designed with attention to detail; functional, responsive, easy-care and durable.

-  BREATHABLE
-  EASY STRETCH
-  MOISTURE WICKING
-  HOT WASH
-  LIGHT WEIGHT
-  QUICK DRYING
-  CLEVER STORAGE
-  PET FUR FRIENDLY





Identifiers



Functional pockets



Utility loops



**FABRIC COMPOSITION**

96% Polyester 4% Elastane

**CARE INSTRUCTIONS**

Can be washed at 60°C.

Do not bleach, soak or tumble dry. Line dry in shade.



**CST941LS**  
Womens V-Neck  
Scrub Top  
S - 5XL



**CST942LS**  
Womens Round  
Neck Scrub Top  
XXS - 5XL



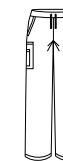
**CST945MS**  
Mens V-Neck  
Scrub Top  
XS - 5XL



**CSP944LL**  
Womens Straight  
Leg Scrub Pant  
S - 5XL



**CSP943LL**  
Womens Slim Leg  
Scrub Pant  
XXS - 3XL



**CSP946ML**  
Mens  
Scrub Pant  
XS - 5XL



# RILEY SCRUBS

Inspired by athleisure and expertly designed to take you through the longest of shifts in comfort. Cotton-rich fabric that feels incredibly soft against the skin, but durable enough for the demands of healthcare.

-  BREATHABLE
-  EASY STRETCH
-  ANTI ODOUR
-  CLEVER STORAGE
-  HOT WASH



**FEATURED**

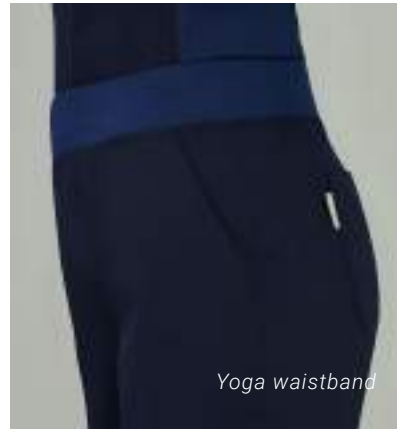
1. **CST043LS** Scrub Top  
**CSP047LL** Straight Leg  
Scrub Pant  
**CST043MS** Scrub Top  
**CSP042ML** Jogger  
Scrub Pant
2. **CST043MS** Scrub Top  
**CSP943LL** Straight Leg  
Scrub Pant
3. **CST043LS** Scrub Top
4. **CST043LS** Scrub Top  
**CSP042LL** Jogger  
Scrub Pant



4.



*Antibacterial active  
stretch side panel*



*Yoga waistband*



*Jogger cuff*

**FABRIC COMPOSITION**

Main: 52% Cotton

45% Polyester 3% Elastane

Stretch panels:

88% Polyester 12% Elastane  
with antibacterial treatment.

**CARE INSTRUCTIONS**

Can be washed at 60°C. Do not  
bleach or soak. Tumble dry on  
low or line dry in shade. Dry  
cleanable. Cool iron body only.



**CST043LS**  
Womens V-Neck  
Stretch Scrub Top  
XXS - 3XL



**CSP042LL**  
Womens Slim Leg  
Jogger Scrub Pant  
XXS - 3XL  
Available in Midnight Navy,  
Electric Blue and Black



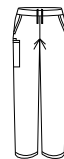
**CSP047LL**  
Womens Straight  
Leg Scrub Pant  
XXS - 3XL



**CST043MS**  
Mens V-Neck  
Stretch Scrub Top  
XS - 5XL



**CSP042ML**  
Mens Slim Leg  
Jogger Scrub Pant  
XS - 5XL  
Available in Midnight Navy,  
Electric Blue and Black



**CSP047ML**  
Mens Straight  
Leg Scrub Pant  
XS - 5XL



**NEW**

# PARKS SCRUBS

Cotton-rich fabric with added antibacterial protection and stretch. Full zip front removes the need for overhead removal.

Match tops with Riley lowers, or wear with any Functional lowers.

Suitable for all health and beauty professionals.



BREATHABLE



EASY  
STRETCH



ANTI  
ODOUR

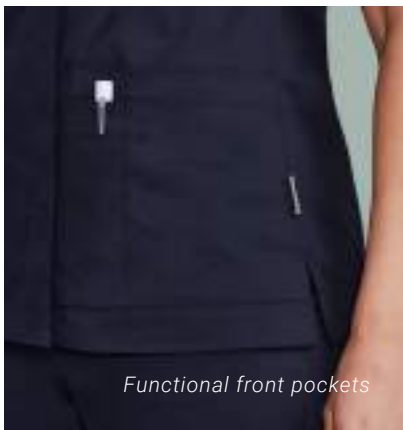
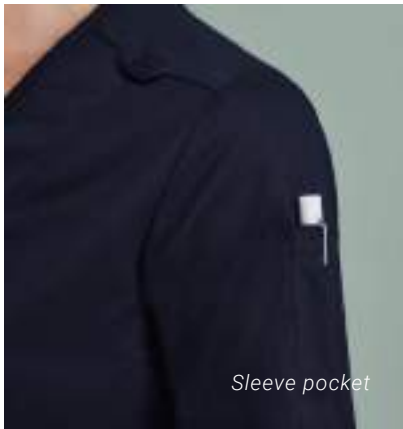
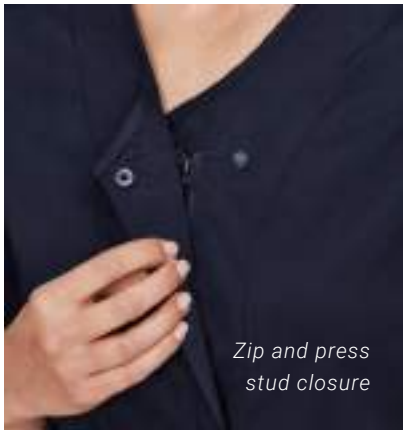


CLEVER  
STORAGE



HOT  
WASH





#### FABRIC COMPOSITION

52% Cotton 45% Polyester  
3% Elastane with  
SILVERPLUS® antibacterial  
treatment.

#### CARE INSTRUCTIONS

Can be washed at 60°C. Do not  
bleach or soak. Tumble dry on  
low or line dry in shade. Dry  
cleanable. Cool iron.



**CST240LS**  
Womens Zip Front  
Crossover Scrub Top  
XXS - 3XL

NEW

# ROSE SCRUBS

Cotton-rich fabric that feels incredibly soft against the skin, but durable enough for the demands of healthcare. With added Antibacterial protection and stretch.

Rose Tunic can be worn as a maternity scrub top or as a relaxed fit tunic scrub top.



BREATHABLE



EASY  
STRETCH



ANTI  
ODOUR



CLEVER  
STORAGE



HOT  
WASH

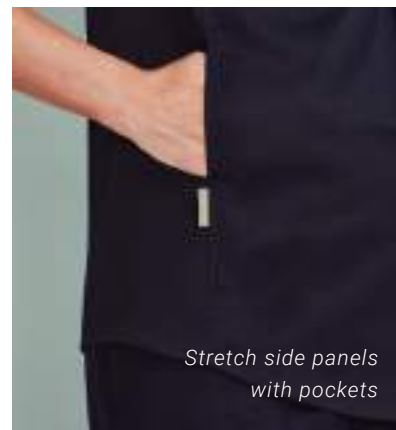




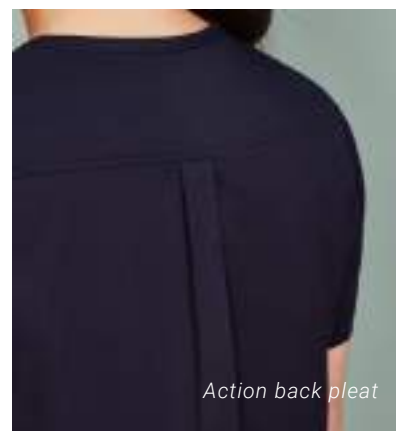
\*Vera wears a size Small and is 6 months pregnant.



Functional placket



Stretch side panels  
with pockets



Action back pleat

### FABRIC COMPOSITION

Main: 52% Cotton  
45% Polyester  
3% Elastane  
with SILVERPLUS®  
antibacterial treatment.  
Stretch panels:  
88% Polyester  
12% Elastane with  
SILVERPLUS®  
antibacterial treatment.



### CARE INSTRUCTIONS

Can be washed at 60°C.  
Do not bleach or soak.  
Tumble dry on low or  
line dry in shade. Dry  
cleanable. Cool iron  
body only.



**CST243LS**  
Womens Tunic  
Scrub Top  
XS - 3XL



**CSP244LL**  
Womens Maternity  
Scrub Pant  
XS - 3XL



# PRINTED SCRUBS

A classic range of printed scrubs that pair back with any Biz Care lowers. Midnight Navy base with a fun but subtle print to ensure branding still stands out.

Perfect for Veterinarians, Pediatricians, Early Learning Educators and anyone else looking to add some fun to their Care wardrobe.



BREATHABLE



EASY  
IRON



CLEVER  
STORAGE



WARM  
WASH



PET FUR  
FRIENDLY



MIDNIGHT NAVY (BASE)



A perfect blend of style, comfort and function. Cotton-rich fabric is breathable, soft and lightweight; perfect for all climates. Styles feature side splits, 2 front pockets and a chest pocket on mens styles. Relaxed Fit.

**FABRIC COMPOSITION**  
**CARE INSTRUCTIONS**

Soft cotton fabric blend - 97% Cotton 3% Elastane  
Gentle machine wash. Wash inside out with similar colours.  
Do not bleach or soak. Tumble dry on low or line dry in shade.



**CST147LS**  
Best Friends  
Womens Scrub Top  
XXS - 3XL, 5XL



**CST147MS**  
Best Friends  
Mens Scrub Top  
XS - 3XL, 5XL



**CST148LS**  
Space Party  
Womens Scrub Top  
XXS - 3XL, 5XL



**CST148MS**  
Space Party  
Mens Scrub Top  
XS - 3XL, 5XL

# HOPE LAB COATS

Functional and comfortable lab coats in a modern tailored fit. Soft and luxurious fabric treated with Teflon® Stain Release. Lab coats don't have to be boring!

## FABRIC COMPOSITION

65% Polyester 35% Cotton  
with Teflon® Stain Release

## CARE INSTRUCTIONS

Machine washable.  
For optimum results  
wash warm at 40°C.  
Can be dry cleaned.





WHITE



**CC144MC**  
Hope Mens  
Cropped Lab Coat  
XS - 3XL




**CC144LC**  
Hope Womens  
Cropped Lab Coat  
XS - 2XL



**CC144ML**  
Hope Mens  
Longline Lab Coat  
XS - 3XL

**CC144LL**  
Hope Womens  
Longline Lab Coat  
XS - 2XL

 BIZ COLLECTION

# UNISEX LAB COATS

Biz Collection unisex lab coats are made from easy-care performance fabric in a durable cotton twill. Mechanical stretch to provide extra comfort.

## FABRIC COMPOSITION

65% Polyester 35% Cotton Twill

## CARE INSTRUCTIONS

Easy-care. Machine wash-and-wear.







WHITE



H132ML  
Unisex  
Lab Coat  
XS - 3XL, 5XL



NEW

# HIJAB

Traditional hijab, in a comfortable and non-slip fabric.  
Measurements: 172cm (L) x 63cm (W).

**FABRIC COMPOSITION** 100% Polyester Georgette

**CARE INSTRUCTIONS** Machine wash in garment bag on gentle cycle, with little to no pressing required.



CH248L  
Hijab  
One Size



SAGE/  
BLACK

# HAPPY FEET SOCKS

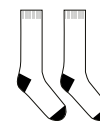
Add a PEP to YOUR STEP with our everyday comfort socks, perfect for those on their feet or sitting down all day.

**FABRIC COMPOSITION**

41% Cotton 28% Nylon  
26% Polyester 5% Elastane

**CARE INSTRUCTIONS**

Warm machine wash inside out.



CCS149U  
Unisex  
Comfort Socks  
S, M, L



CHEEKY  
PETS

PUPPIES

SUGAR  
LAND

NEW

# PRINTED SCRUB CAP

Made from soft and breathable 100% cotton. Featuring elastic back and tie, designed to stretch easily over buns. Side buttons for your mask.



UNISEX



WARM  
WASH



BREATHABLE



FABRIC COMPOSITION  
100% Cotton

CARE INSTRUCTIONS  
Gentle machine wash. Wash with similar colours. Do not bleach or soak. Tumble dry on low or line dry in shade.



CSC245U  
Unisex  
Scrub Cap  
One Size





MIDNIGHT  
NAVY

BLACK

NEW

# REVERSIBLE SCRUB CAP

Reversible scrub caps, perfect for industrial laundering. Made from cotton blend fabric with antibacterial protection. Featuring elastic back and tie, designed to stretch easily over buns.



UNISEX



REVERSIBLE



HOT  
WASH



ANTI  
BACTERIAL



## FABRIC COMPOSITION

60% Cotton 40% Polyester  
with antibacterial protection

## CARE INSTRUCTIONS

For longevity of antibacterial treatment we recommend domestic laundry at 60°C or lower. Tumble dry on low or line dry in shade. Dry cleanable. Warm Iron.



CSC249U  
Unisex Reversible  
Scrub Cap  
One Size

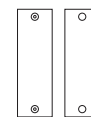


# AVERY IDENTIFIERS

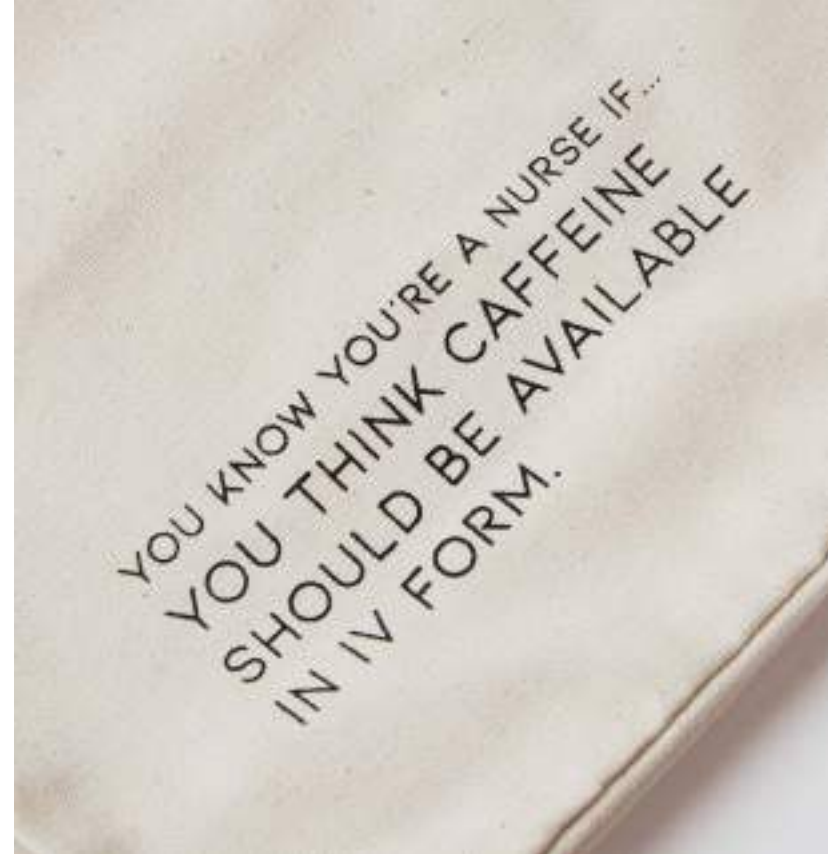
The perfect way to differentiate streams and job roles without having the team in different coloured scrubs. Identifiers easily snap onto the hidden press studs on the scrub sleeve. A small monogram is also possible on the identifier. Compatible for use with Avery Scrub Tops only.

## FABRIC COMPOSITION

96% Polyester 4% Elastane with metal press studs



CID940U  
Scrub Identifier  
One Size



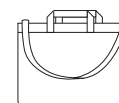
NATURAL

## BIZ CARE TOTE BAG

The perfect work bag or shopping tote. Inside pocket, metal clip for keys, removable hard base and attached short and long handles.


**FABRIC COMPOSITION** 100% Recycled Canvas Cotton

**CARE INSTRUCTIONS** Gentle machine or hand wash. Remove base before washing.



CA044U  
Tote Bag  
One Size



 BIZ COLLECTION

# ZEN TUNIC


Biz Collection Zen tunic, with Dupont™ Teflon® stain release stretch fabric. Semi-fitted style with side splits and long hem line.

**FABRIC COMPOSITION**  
**CARE INSTRUCTIONS**

97% Polyester 3% Elastane  
Machine wash-and-wear.



**H134LS**  
Womens  
Zen Tunic  
6 - 20

 BIZ COLLECTION

# SPA TUNIC

Biz Collection Spa tunic comes in a stretch fabric with linen-like appearance. Dupont™ Teflon® stain release function, asymmetrical mock-wrap front, with invisible centre back zip and deep side splits.

**FABRIC COMPOSITION**  
**CARE INSTRUCTIONS**

97% Polyester 3% Elastane  
Machine wash-and-wear.



**H630L**  
Womens  
Spa Tunic  
6 - 20





BLACK

WHITE



BLACK

BIZ COLLECTION

# EDEN TUNIC

Biz Collection Eden tunic, with Dupont™ Teflon® stain release stretch fabric. Front pockets, longer hem line, semi-fitted, side splits and center back action-back pleat.

**FABRIC COMPOSITION**  
**CARE INSTRUCTIONS**

97% Polyester 3% Elastane  
Machine wash-and-wear.



**H133LS**  
Womens  
Eden Tunic  
6 - 20

BIZ COLLECTION

# BLISS TUNIC

Biz Collection Bliss tunic, with Dupont™ Teflon® stain release stretch fabric. Semi-fitted with side splits, longer length vented sleeves, 2 way zip with nickle free diamantè and front pockets.

**FABRIC COMPOSITION**  
**CARE INSTRUCTIONS**

97% Polyester 3% Elastane  
Machine wash-and-wear.



**H632L**  
Womens  
Bliss Tunic  
6 - 20

# BIZ CARE KNITS





NAVY

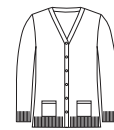
CHARCOAL

BLACK  
CK962LC  
ONLY

Designed for functional roles, Biz Care knits provide warmth, durability and a soft hand feel. With longer hem lengths to provide extra coverage.

**FABRIC COMPOSITION**  
**CARE INSTRUCTIONS**

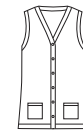
60% Acrylic 40% Merino Wool  
Warm gentle machine wash with wool approved detergent.



**CK045LC**  
Womens Button  
Front Knit Cardigan  
XXS - 4XL



**CK962LC**  
Womens Zip  
Front S/S Knit  
XXS - 4XL




**CK961LV**  
Womens Button  
Front Knit Vest  
XXS - 4XL



NAVY

CHARCOAL

BLACK

 BIZ COLLECTION

# 2-WAY ZIP CARDIGAN

The perfect blend for those after a non-wool alternative. 2-way zip allows for multiple styling options.

## FABRIC COMPOSITION

73% Viscose 27% Nylon

## CARE INSTRUCTIONS

Machine washable.



**LC3505**  
Womens 2 Way  
Zip Cardigan  
S - 4XL

See the full range of styles and colours available in the Biz Collection catalogue.






NAVY

CHARCOAL

BLACK

 BIZ COLLECTION

# MILANO VEST

Easy-care, 12-gauge wool blend knits are perfect for keeping you warm in cooler environments.

## FABRIC COMPOSITION

50% Pre-Shrunk Wool 50% Acrylic

## CARE INSTRUCTIONS

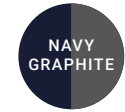
Machine washable.



**LV619L**  
Womens  
Milano Vest  
XS - 3XL



**WV619M**  
Mens  
Milano Vest  
XS - 3XL, 5XL



**BIZ COLLECTION**

# GENEVA RANGE

Breathable softshell membrane offers wind and water repellent protection with ribbed fleece lining for lightweight warmth.

**FABRIC COMPOSITION**  
 BIZTECH™ 100% Polyester  
**CARE INSTRUCTIONS**  
 Machine washable.



**J307L**  
 Womens  
 Geneva Jacket  
 S - 2XL



**J404L**  
 Womens  
 Geneva Vest  
 S - 2XL




**J307M**  
 Mens  
 Geneva Jacket  
 S - 3XL, 5XL



**J404M**  
 Mens  
 Geneva Vest  
 S - 3XL, 5XL



 BIZ COLLECTION

# FLEECE RANGE

The essential micro-fleece jacket and vest range is low-pilling with 2 side zip pockets.

## FABRIC COMPOSITION

100% Polyester

## CARE INSTRUCTIONS

Machine washable.



**PF631**  
Womens  
Fleece Jacket  
8 - 24



**PF905**  
Womens  
Fleece Vest  
8 - 24



**PF630**  
Mens  
Fleece Jacket  
XS - 3XL, 5XL

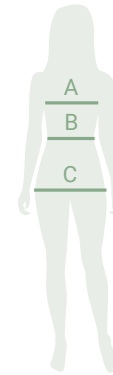


**F233MN**  
Mens  
Fleece Vest  
XS - 3XL, 5XL

# WOMENS SIZE GUIDE

Biz Care apparel sizes are designed to fit average industry standards for the below body measurements. Please use this handy Body Measurement Guide to compare your own measurements and help you determine which size to order.

Use these measurements as a guide when selecting the right size garment, but also take into consideration the garment fit.



**A. BUST** - Measure under your arms and across shoulder blades, around the fullest part of your bust.

**B. WAIST** - Measure around your natural waistline. This is the smallest part of your waist.

**C. HIP** - Measure around fullest part of your hips (about 20 - 24 cm down from waist) while standing naturally.

**PANT AND SKIRT LENGTHS** - Pants and skirts will vary in length depending on the height and shape of each individual. Most pants come with a hem allowance for easy alterations.

## Women's Shirts, Scrub Tops, Knitwear and Outerwear

		XXS	XS	XS-S	S	M	L	L-XL	XL	2XL	3XL	4XL	5XL		
AU/NZ		4	6	8	10	12	14	16	18	20	22	24	26	28	30
Bust	cm	75-77	78-82	83-87	88-92	93-97	98-102	103-108	109-114	115-119	120-124	125-129	130-134	135-139	140-144
	in	29.5-30.3	30.7-32.3	32.6-34.2	34.6-36.2	36.6-38.2	38.6-40.2	40.6-42.5	43-44.9	45.3-46.9	47.2-48.8	49.2-50.8	51.2-52	53-54.7	55.1-56.7

## Women's Pants, Scrub Pants and Skirts

		XXS	XS	XS-S	S	M	L	L-XL	XL	XL-2XL	2XL-3XL	3XL-4XL	4XL	5XL	
AU/NZ		4	6	8	10	12	14	16	18	20	22	24	26	28	30
Waist	cm	57-59	60-64	65-69	70-74	75-79	80-84	85-90	91-96	97-101	102-106	107-111	112-116	117-121	122-126
	in	22.4-23.2	23.6-25.2	25.6-27.2	27.5-29.1	29.5-31.1	31.5-33.1	33.5 - 35.4	35.8-37.8	38.1-39.8	40.2-41.7	42.1-43.7	44.1-45.7	46.1-47.6	48-49.6
Hip	cm	84-86	87-91	92-96	97-101	102-106	107-111	112-117	118-123	124-128	129-133	134-138	139-143	144-148	149-153
	in	33.1-33.9	34.2-35.8	36.2-37.8	38.1-39	40.1-41.7	42.1-43.7	44.1-46.1	46.5 -48.4	48.8-50.4	50.7-52.4	52.7-54.3	54.7-56.3	56.7-58.3	58.7-60.2

All measurements provided are approximate body measurements and for reference only.

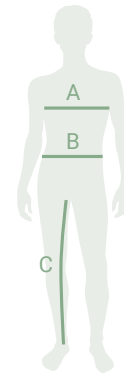
Actual sizing may vary according to the style and fit of the garment. Not all styles are available in all sizes, please refer to product pages for available sizing.



# MENS SIZE GUIDE

Biz Care apparel sizes are designed to fit average industry standards for the below body measurements. Please use this handy Body Measurement Guide to compare your own measurements and help you determine which size to order.

Use these measurements as a guide when selecting the right size garment, but also take into consideration the garment fit.



**A. CHEST** - Measure under your arms and across shoulder blades, around the fullest part of your chest. Hold one finger between body and tape.

**B. WAIST** - Measure around your natural waistline while holding one finger between body and tape. Measure over shirt at position your pants would normally sit.

**C. IN SEAM** - Measure from the crotch seam to the bottom of the inside leg of a well-fitting pair of pants.

**PANT LENGTHS** - Pants will vary in length depending on the height of each individual and also their shape. Most pants come with a hem allowance for easy alterations.

## Men's Shirts, Polos, Knitwear and Outerwear

Chest	cm	87	92	97	102	107	112	117	122	127	132	137
	in	34	36	38	40	42	44	46	48	50	52	54
Shirts and Polos			XS	S	M	L	XL	2XL	3XL	4XL	5XL	
Knitwear and Outerwear			XS	S	M	L	XL	2XL	3XL	4XL	5XL	

## Men's Scrub Tops and Lab Coat

Chest	cm	87	92	97	102	107	112	117	122	127	132	137
	in	34	36	38	40	42	44	46	48	50	52	54
Men's Scrub Tops			XS	S	M	L	XL	XL -2XL	3XL	4XL	5XL	
Unisex Scrub Tops			XS	S	M	L	XL	2XL	3XL		5XL	
Unisex Lab Coat			XS	S	M	L	XL	2XL	3XL		5XL	

## Men's Pants, Shorts and Scrub Pants

Waist	cm	72	77	82	87	92	97	102	107	112	117	122	127
	in	28	30	32	34	36	38	40	42	44	46	48	50
Biz Care Comfort Waist Lowers		72	77	82	87	92	97	102	107	112	117	122	127
Men's Scrub Pants			XS	S	M	L	XL	2XL	3XL	4XL		5XL	
Unisex Scrub Pants			XS	S	M	L	XL	2XL	3XL		5XL		

This catalogue has been compiled and presented with due care and is considered to be true and correct at the time of publication. Colours are reproduced as closely as possible, but may differ slightly from actual products due to printing processes and paper composition. Please refer to [www.biz-care.com](http://www.biz-care.com) for the latest up-to-date products and information.

# BIZ CARE CARES FOR ALL

It is no secret that the healthcare industry is booming. Biz Care understands that the healthcare industry is made up of more than just public and private hospitals. As such, we offer a comprehensive range of attire to suit an array of CARE industries as well as supporting related services.

The Biz Care healthwear range is designed to extend into various work streams and job roles within any sized clinic or practice.

- Medical Clinics & Dental Services
- Optometry
- Physiotherapy
- Chiropractic
- Aged Care, Out-Patient & Remedial Services
- Pharmaceutical
- Research Labs
- Medical Schools
- Veterinary
- Beauty Therapists & Clinics
- Cosmeceutical Industry
- Transport Services
- Early Learning Centres
- Pathology & Diagnostic Imaging Services
- Hygiene, Cleaning & Housekeeping Services
- And so much more...



# WHY CHOOSE BIZ CARE?

At Biz Care, we like to think of ourselves as masters of the finest details. Our healthwear is rigorously tested in our own dedicated laboratories and we trial our designs on real health workers to ensure they are fit for purpose.

By combining on-trend design, comfort and performance, we're proud to produce apparel that suits everybody in every industry by offering a range of contemporary styles, colours and silhouettes to match.



## INTER-BRAND COMPATIBILITY

Biz Care has been designed to coordinate easily with key styles and colours from the Biz Collection range.



## LOCAL EXPERTS

Our team of dedicated in-house experts work together across our Auckland and Melbourne offices. Biz Care make products that are suitable for all body shapes and sizes with materials that cater for our local climates and job functions.



## SAY NO TO FAST FASHION

We create considered ranges that are always on-trend and last well beyond typically seasonal trends. Our ranges are active and stocked for a minimum of 3 - 5 years, which is better for you and the environment.



## SHOP LOCAL / SUPPORT LOCAL

Biz Care is proudly sold through a network of over 4000 locally owned and operated businesses, supporting thousands of employees across Australia and New Zealand.

**bizcare**  
WWW.BIZ-CARE.COM

WANT MORE  
INFORMATION ON HOW  
BIZ CARE CAN DRESS  
YOUR CARE INDUSTRY?

ENQUIRE WITH YOUR  
BIZ CARE BRAND  
EXPERT TODAY!



# bizcare

[WWW.BIZ-CARE.COM](http://WWW.BIZ-CARE.COM)

THANK YOU ♥ FOR CARING

